

# PIN1 Antibody

Rabbit Polyclonal

Antigen Affinity Purified

Protein ID NP\_006212.1

Catalog No. A302-316A

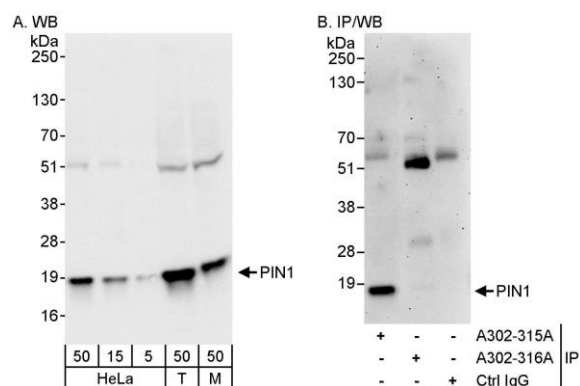
GeneID 5300

Lot No. A302-316A-1



<b>APPLICATIONS</b>	WB
<b>SPECIES REACTIVITY</b>	Human, Mouse
<b>PRESUMED REACTIVITY</b>	Based on 100% sequence identity, this antibody is predicted to react with Bovine
<b>AMOUNT</b>	100 µl
<b>CONCENTRATION</b>	1000 µg/ml
<b>STORAGE/SHELF LIFE</b>	2 - 8° C / 1 year from date of receipt
<b>PHYSICAL STATE</b>	Liquid
<b>BUFFER</b>	Tris-citrate/phosphate buffer, pH 7 to 8 containing 0.09% Sodium Azide
<b>ISOTYPE</b>	IgG
<b>ORIGIN</b>	USA
<b>PRODUCTION PROCEDURES</b>	<p>Antibody was affinity purified using an epitope specific to PIN1 immobilized on solid support.</p> <p>The epitope recognized by A302-316A maps to a region between residue 113 and 163 of human protein (peptidylprolyl cis/trans isomerase) NIMA-interacting 1 using the numbering given in entry NP_006212.1 (GeneID 5300).</p> <p>Immunoglobulin concentration was determined by extinction coefficient: absorbance at 280 nm of 1.4 equals 1.0 mg of IgG.</p>
<b>APPLICATIONS</b>	<p>Centrifuge tube to remove product from lid. Optimal working dilutions should be determined experimentally by the investigator. Prepare working dilution immediately before use.</p> <p>Western Blot                      1:1,000 – 1:5,000</p> <p>Immunoprecipitation            Not recommended. Use rabbit anti-PIN1 antibody A302-315A.</p>
<b>APPLICATION NOTES</b>	Western blot of lysates performed using standard western blot reagents and 4-12% SDS-PAGE.
<b>ADDITIONAL INFO</b>	<p><a href="https://www.bethyl.com/product/A302-316A">https://www.bethyl.com/product/A302-316A</a></p> <p>Use the link above to view SDS, a current list of citations, and other product specific information.</p>

This document certifies that this product has met all of the quality control standards defined by Bethyl Laboratories, Inc.  
Eric McIntush, PhD | Chief Scientific Officer Date: June 21, 2019



**Detection of human and mouse PIN1 by western blot (h&m) and immunoprecipitation (h).** *Samples:* Whole cell lysate from HeLa (5, 15 and 50  $\mu$ g for WB; 1 mg for IP, 20% of IP loaded), HEK293T (T; 50  $\mu$ g), and mouse NIH 3T3 (M; 50  $\mu$ g) cells. *Antibodies:* Affinity purified rabbit anti-PIN1 antibody A302-316A used for WB at 0.4  $\mu$ g/ml (A) and 1  $\mu$ g/ml (B) and used for IP at 10  $\mu$ g/mg lysate. PIN1 was successfully immunoprecipitated by rabbit anti-PIN1 antibody A302-315A, which recognizes an upstream epitope. *Detection:* Chemiluminescence with exposure times of 3 seconds (A) and 3 minutes (B).