

RAD23B Antibody

Rabbit Polyclonal

Antigen Affinity Purified

Protein ID NP_002865.1

Catalog No. A302-305A

GeneID 5887

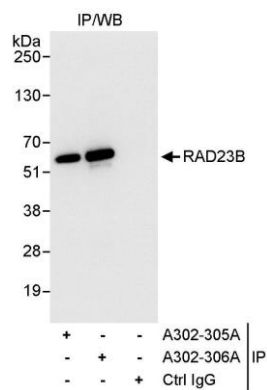
Lot No. A302-305A-1



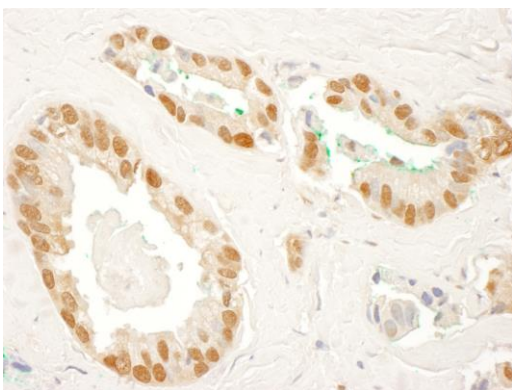
APPLICATIONS	IP, IHC
SPECIES REACTIVITY	Human
AMOUNT	100 µl
CONCENTRATION	1000 µg/ml
STORAGE/SHELF LIFE	2 – 8° C / 1 year from date of receipt
PHYSICAL STATE	Liquid
BUFFER	Tris-citrate/phosphate buffer, pH 7 to 8 containing 0.09% Sodium Azide
ISOTYPE	IgG
ORIGIN	USA
PRODUCTION PROCEDURES	<p>Antibody was affinity purified using an epitope specific to RAD23B immobilized on solid support.</p> <p>The epitope recognized by A302-305A maps to a region between residue 125 and 175 of human UV excision repair protein RAD23 homolog using the numbering given in entry NP_002865.1 (GeneID 5887).</p> <p>Immunoglobulin concentration was determined by extinction coefficient: absorbance at 280 nm of 1.4 equals 1.0 mg of IgG.</p>
APPLICATIONS	<p>Centrifuge tube to remove product from lid. Optimal working dilutions should be determined experimentally by the investigator. Prepare working dilution immediately before use.</p> <p>Western Blot Not recommended. Use rabbit anti-RAD23B antibody A302-306A.</p> <p>Immunoprecipitation 10 µg/mg lysate</p> <p>Immunohistochemistry 1:500 – 1:2,000. Epitope retrieval with citrate buffer pH 6.0 is recommended for FFPE tissue sections.</p>
APPLICATION NOTES	Western blot of immunoprecipitates performed using Normal Pig Serum (Cat. No. S100-020), Goat anti-Rabbit Light Chain HRP Conjugate (Cat. No. A120-113P) and 4-20% SDS-PAGE (link to IP-western blot protocol in Additional Info section below).
IHC HUMAN CONTROLS	Breast Carcinoma, Colon Carcinoma, Prostate Carcinoma
ADDITIONAL INFO	<p>https://www.bethyl.com/product/A302-305A</p> <p>Use the link above to view SDS, a current list of citations, and other product specific information.</p> <p>IP-western blot protocol: https://www.bethyl.com/content/protocol_IP_WB</p>

This document certifies that this product has met all of the quality control standards defined by Bethyl Laboratories, Inc.
Eric McIntush, PhD | Chief Scientific Officer

Date: June 21, 2019



Detection of human RAD23B by western blot of immunoprecipitates. *Samples:* Whole cell lysate (1 mg for IP, 20% of IP loaded) from HeLa cells. *Antibodies:* Affinity purified rabbit anti-RAD23B antibody A302-305A used for IP at 10 µg/mg lysate. RAD23B was also immunoprecipitated by rabbit anti-RAD23B antibody A302-306A, which recognizes a downstream epitope. For blotting immunoprecipitated RAD23B, A302-306A was used at 1 µg/ml. *Detection:* Chemiluminescence with an exposure time 3 seconds.



Detection of human RAD23B by immunohistochemistry. *Sample:* FFPE section of human prostate carcinoma. *Antibody:* Affinity purified rabbit anti- RAD23B (Cat. No. A302-305A Lot1) used at a dilution of 1:1,000 (1 µg/ml). *Detection:* DAB