

# PTP1B Antibody

Rabbit Polyclonal

Antigen Affinity Purified

Protein ID NP\_002818.1

Catalog No. A302-297A

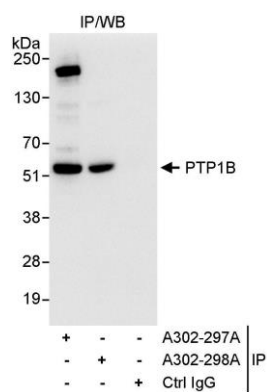
GeneID 5770

Lot No. A302-297A-1



<b>APPLICATIONS</b>	IP				
<b>SPECIES REACTIVITY</b>	Human				
<b>AMOUNT</b>	100 µl				
<b>CONCENTRATION</b>	1000 µg/ml				
<b>STORAGE/SHELF LIFE</b>	2 - 8° C / 1 year from date of receipt				
<b>PHYSICAL STATE</b>	Liquid				
<b>BUFFER</b>	Tris-citrate/phosphate buffer, pH 7 to 8 containing 0.09% Sodium Azide				
<b>ISOTYPE</b>	IgG				
<b>ORIGIN</b>	USA				
<b>PRODUCTION PROCEDURES</b>	<p>Antibody was affinity purified using an epitope specific to PTP1B immobilized on solid support.</p> <p>The epitope recognized by A302-297A maps to a region between residue 275 and 325 of human protein tyrosine phosphatase 1B using the numbering given in entry NP_002818.1 (GeneID 5770).</p> <p>Immunoglobulin concentration was determined by extinction coefficient: absorbance at 280 nm of 1.4 equals 1.0 mg of IgG.</p>				
<b>APPLICATIONS</b>	<p>Centrifuge tube to remove product from lid. Optimal working dilutions should be determined experimentally by the investigator. Prepare working dilution immediately before use.</p> <table><tr><td>Western Blot</td><td>Not recommended. A302-298A has not performed satisfactorily when used for WB of PTP1B in crude preparations (e.g. whole cell lysate). This antibody can be used for WB of enriched (e.g. immunoprecipitated) sources of PTP1B.</td></tr><tr><td>Immunoprecipitation</td><td>10 µg/mg lysate</td></tr></table>	Western Blot	Not recommended. A302-298A has not performed satisfactorily when used for WB of PTP1B in crude preparations (e.g. whole cell lysate). This antibody can be used for WB of enriched (e.g. immunoprecipitated) sources of PTP1B.	Immunoprecipitation	10 µg/mg lysate
Western Blot	Not recommended. A302-298A has not performed satisfactorily when used for WB of PTP1B in crude preparations (e.g. whole cell lysate). This antibody can be used for WB of enriched (e.g. immunoprecipitated) sources of PTP1B.				
Immunoprecipitation	10 µg/mg lysate				
<b>APPLICATION NOTES</b>	Western blot of immunoprecipitates performed using Normal Pig Serum (Cat. No. S100-020), Goat anti-Rabbit Light Chain HRP Conjugate (Cat. No. A120-113P) and 4-20% SDS-PAGE (link to IP-western blot protocol in Additional Info section below).				
<b>ADDITIONAL INFO</b>	<p><a href="https://www.bethyl.com/product/A302-297A">https://www.bethyl.com/product/A302-297A</a></p> <p>Use the link above to view SDS, a current list of citations, and other product specific information.</p> <p>IP-western blot protocol: <a href="https://www.bethyl.com/content/protocol_IP_WB">https://www.bethyl.com/content/protocol_IP_WB</a></p>				

This document certifies that this product has met all of the quality control standards defined by Bethyl Laboratories, Inc.  
Eric McIntush, PhD | Chief Scientific Officer Date: June 21, 2019



**Detection of human PTP1B by western blot of immunoprecipitates.** *Samples:* Whole cell lysate (1 mg for IP, 20% of IP loaded) from HeLa cells. *Antibodies:* Affinity purified rabbit anti-PTP1B antibody A302-297A used for IP at 10  $\mu\text{g}/\text{mg}$  lysate. PTP1B was also immunoprecipitated by rabbit anti-PTP1B antibody A302-298A, which recognizes a downstream epitope. For blotting immunoprecipitated PTP1B, A302-297A was used at 0.4  $\mu\text{g}/\text{ml}$ . *Detection:* Chemiluminescence with an exposure time of 3 seconds.