

FUSIP1 Antibody

Rabbit Polyclonal

Antigen Affinity Purified

Protein ID NP_006616.1

Catalog No. A302-282A

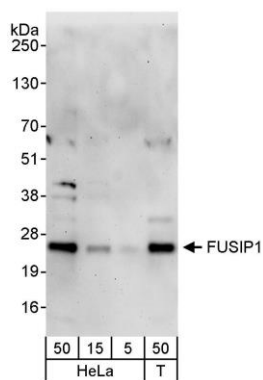
GeneID 10772

Lot No. A302-282A-1

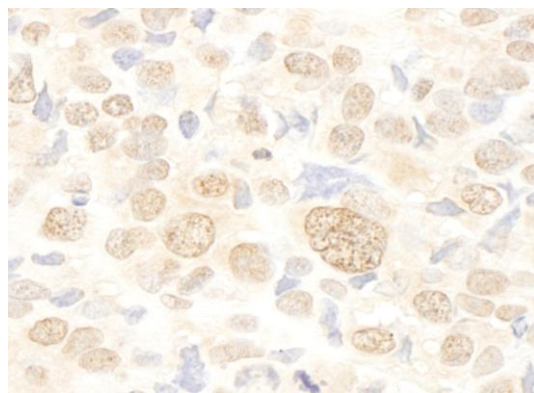


APPLICATIONS	WB, IHC
SPECIES REACTIVITY	Human
PRESUMED REACTIVITY	Based on 100% sequence identity, this antibody is predicted to react with Mouse, Rat, Bovine, Pig and Orangutan
AMOUNT	100 µl
CONCENTRATION	1000 µg/ml
STORAGE/SHELF LIFE	2 - 8° C / 1 year from date of receipt
PHYSICAL STATE	Liquid
BUFFER	Tris-citrate/phosphate buffer, pH 7 to 8 containing 0.09% Sodium Azide
ISOTYPE	IgG
ORIGIN	USA
PRODUCTION PROCEDURES	<p>Antibody was affinity purified using an epitope specific to FUSIP1 immobilized on solid support.</p> <p>The epitope recognized by A302-282A maps to a region between residue 133 and 183 of human FUS interacting protein (serine/arginine-rich) 1 using the numbering given in entry NP_006616.1 (GeneID 10772).</p> <p>Immunoglobulin concentration was determined by extinction coefficient: absorbance at 280 nm of 1.4 equals 1.0 mg of IgG.</p>
APPLICATIONS	<p>Centrifuge tube to remove product from lid. Optimal working dilutions should be determined experimentally by the investigator. Prepare working dilution immediately before use.</p> <p>Western Blot 1:1,000 - 1:5,000</p> <p>Immunohistochemistry 1:500 - 1:2,000. Epitope retrieval with citrate buffer pH 6.0 is recommended for FFPE tissue sections.</p>
APPLICATION NOTES	Western blot of lysates performed using standard western blot reagents and 4-20% SDS-PAGE.
IHC HUMAN CONTROLS	Breast Carcinoma, Ovarian Carcinoma
ADDITIONAL INFO	<p>https://www.bethyl.com/product/A302-282A</p> <p>Use the link above to view SDS, a current list of citations, and other product specific information.</p>

This document certifies that this product has met all of the quality control standards defined by Bethyl Laboratories, Inc.
Eric McIntush, PhD | Chief Scientific Officer Date: June 21, 2019



Detection of human FUSIP1 by western blot. *Samples:* Whole cell lysate from HeLa (5, 15 and 50 μ g) and HEK293T (T; 50 μ g) cells. *Antibody:* Affinity purified rabbit anti-FUSIP1 antibody A302-282A used for WB at 0.4 μ g/ml. *Detection:* Chemiluminescence with an exposure time of 3 minutes.



Detection of human FUSIP1 by immunohistochemistry. *Sample:* FFPE section of human breast carcinoma. *Antibody:* Affinity purified rabbit anti-FUSIP1 (Cat. No. A302-282A Lot1) used at a dilution of 1:1,000 (1 μ g/ml). *Detection:* DAB