

hSET1B Antibody

Rabbit Polyclonal

Antigen Affinity Purified

Protein ID NP_055863.1

Catalog No. A302-280A

GeneID 23067

Lot No. A302-280A-2

APPLICATIONS IP

SPECIES REACTIVITY Human

AMOUNT 100 µl

CONCENTRATION 1000 µg/ml

STORAGE/SHELF LIFE 2 – 8°C / 1 year from date of receipt

PHYSICAL STATE Liquid

BUFFER Tris-citrate/phosphate buffer, pH 7 to 8 containing 0.09% Sodium Azide

ISOTYPE IgG

ORIGIN USA

PRODUCTION PROCEDURES Antibody was affinity purified using an epitope specific to hSET1B immobilized on solid support.

The epitope recognized by A302-280A maps to a region between residue 350 and 400 of human SET domain containing 1B using the numbering given in entry NP_055863.1 (GeneID 23067).

Immunoglobulin concentration was determined by extinction coefficient: absorbance at 280 nm of 1.4 equals 1.0 mg of IgG.

APPLICATIONS Centrifuge tube to remove product from lid. Optimal working dilutions should be determined experimentally by the investigator. Prepare working dilution immediately before use.

Western Blot Not recommended. A302-280A has not performed satisfactorily when used for WB of hSet1B in crude preparations (e.g. whole cell lysate). This antibody can be used for WB of enriched (e.g. immunoprecipitated) sources of hSet1B.

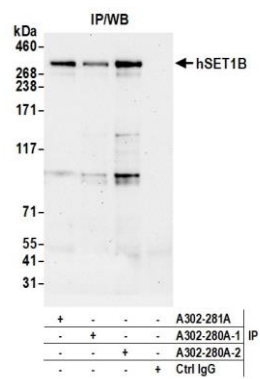
Immunoprecipitation 2–10 µg/mg lysate

IHC HUMAN CONTROLS Breast Carcinoma, Ovarian Carcinoma, Testicular Seminoma

ADDITIONAL INFO <https://www.bethyl.com/product/A302-280A>

Use the link above to view SDS, a current list of citations, and other product specific information. IP-western blot protocol: https://www.bethyl.com/content/protocol_IP_WB

This document certifies that this product has met all of the quality control standards defined by Bethyl Laboratories, Inc.
Michael Spencer, PhD Date: February 15, 2022



Detection of human hSET1B by western blot of immunoprecipitates. *Samples:* Whole cell lysate (1.0 mg per IP reaction; 20% of IP loaded) from HeLa cells prepared using NETN lysis buffer. *Antibodies:* Affinity purified rabbit anti-hSET1B antibody (A302-280A lot 2) used for IP at 6 µg per reaction. hSET1B was also immunoprecipitated by a previous lot of this antibody (A302-280A lot 1) and a second antibody against a different epitope of hSET1B (A302-281A). For blotting immunoprecipitated hSET1B, A302-280A was used at 1 µg/ml. *Detection:* Chemiluminescence with an exposure time of 30 seconds.