

# p600 Antibody

Rabbit Polyclonal

Antigen Affinity Purified

Protein ID NP\_065816.1

Catalog No. A302-277A

GeneID 23352

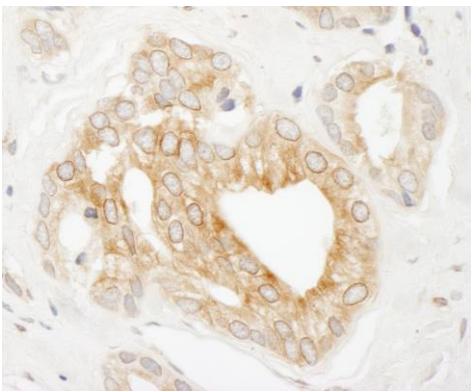
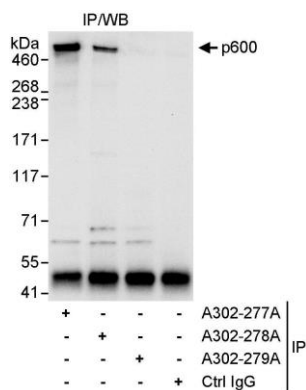
Lot No. A302-277A-1



<b>APPLICATIONS</b>	IP, IHC						
<b>SPECIES REACTIVITY</b>	Human						
<b>PRESUMED REACTIVITY</b>	Based on 100% sequence identity, this antibody is predicted to react with Mouse and Rat						
<b>AMOUNT</b>	100 µl						
<b>CONCENTRATION</b>	1000 µg/ml						
<b>STORAGE/SHELF LIFE</b>	2 – 8° C / 1 year from date of receipt						
<b>PHYSICAL STATE</b>	Liquid						
<b>BUFFER</b>	Tris-citrate/phosphate buffer, pH 7 to 8 containing 0.09% Sodium Azide						
<b>ISOTYPE</b>	IgG						
<b>ORIGIN</b>	USA						
<b>PRODUCTION PROCEDURES</b>	<p>Antibody was affinity purified using an epitope specific to p600 immobilized on solid support.</p> <p>The epitope recognized by A302-277A maps to a region between residue 150 and 200 of human retinoblastoma-associated factor 600 using the numbering given in entry NP_065816.1 (GeneID 23352).</p> <p>Immunoglobulin concentration was determined by extinction coefficient: absorbance at 280 nm of 1.4 equals 1.0 mg of IgG.</p>						
<b>APPLICATIONS</b>	<p>Centrifuge tube to remove product from lid. Optimal working dilutions should be determined experimentally by the investigator. Prepare working dilution immediately before use.</p> <table><tr><td>Western Blot</td><td>Not recommended. Use rabbit anti-p600 antibody A302-278A or A302-279A.</td></tr><tr><td>Immunoprecipitation</td><td>10 µg/mg lysate</td></tr><tr><td>Immunohistochemistry</td><td>1:500 – 1:2,000. Epitope retrieval with citrate buffer pH 6.0 is recommended for FFPE tissue sections.</td></tr></table>	Western Blot	Not recommended. Use rabbit anti-p600 antibody A302-278A or A302-279A.	Immunoprecipitation	10 µg/mg lysate	Immunohistochemistry	1:500 – 1:2,000. Epitope retrieval with citrate buffer pH 6.0 is recommended for FFPE tissue sections.
Western Blot	Not recommended. Use rabbit anti-p600 antibody A302-278A or A302-279A.						
Immunoprecipitation	10 µg/mg lysate						
Immunohistochemistry	1:500 – 1:2,000. Epitope retrieval with citrate buffer pH 6.0 is recommended for FFPE tissue sections.						
<b>APPLICATION NOTES</b>	Western blot of immunoprecipitates performed using Normal Pig Serum (Cat. No. S100-020), Goat anti-Rabbit Light Chain HRP Conjugate (Cat. No. A120-113P) and 3-8% SDS-PAGE (link to IP-western blot protocol in Additional Info section below).						
<b>IHC HUMAN CONTROLS</b>	Ovarian Carcinoma, Prostate Carcinoma						
<b>ADDITIONAL INFO</b>	<p><a href="https://www.bethyl.com/product/A302-277A">https://www.bethyl.com/product/A302-277A</a></p> <p>Use the link above to view SDS, a current list of citations, and other product specific information.</p> <p>IP-western blot protocol: <a href="https://www.bethyl.com/content/protocol_IP_WB">https://www.bethyl.com/content/protocol_IP_WB</a></p>						

This document certifies that this product has met all of the quality control standards defined by Bethyl Laboratories, Inc.  
Eric McIntush, PhD | Chief Scientific Officer

Date: June 21, 2019



**Detection of human p600 by western blot of immunoprecipitates.** *Samples:* Whole cell lysate (1 mg for IP, 20% of IP loaded) from HeLa cells. *Antibodies:* Affinity purified rabbit anti-p600 antibody A302-277A used for IP at 10 µg/mg lysate. p600 was also immunoprecipitated by rabbit anti-p600 antibodies A302-278A and A302-279A, which recognize downstream epitopes. For blotting immunoprecipitated p600, A302-278A was used at 1 µg/ml. *Detection:* Chemiluminescence with an exposure time of 10 seconds.

**Detection of human p600 by immunohistochemistry.** *Sample:* FFPE section of human prostate carcinoma. *Antibody:* Affinity purified rabbit anti- p600 (Cat. No. A302-277A Lot1) used at a dilution of 1:1,000 (1 µg/ml). *Detection:* DAB