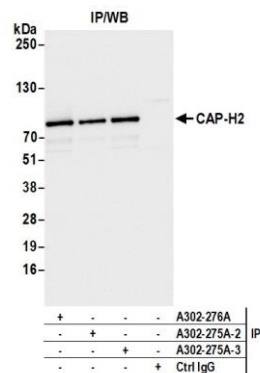
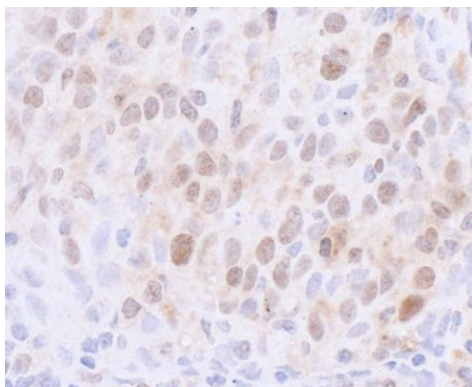


**Detection of human CAP-H2 by western blot.** *Samples:* Whole cell lysate (10  $\mu$ g) from HeLa, Jurkat, Hep-G2, and HEK293T cells prepared using NETN lysis buffer. *Antibody:* Affinity purified rabbit anti-CAP-H2 antibody (A302-275A lot 3) used for WB at 0.1  $\mu$ g/ml. *Detection:* Chemiluminescence with an exposure time of 75 seconds.



**Detection of human CAP-H2 by western blot of immunoprecipitates.** *Samples:* Whole cell lysate (1.0 mg per IP reaction; 20% of IP loaded) from HeLa cells prepared using NETN lysis buffer. *Antibodies:* Affinity purified rabbit anti-CAP-H2 antibody (A302-275A lot 3) used for IP at 6  $\mu$ g per reaction. CAP-H2 was also immunoprecipitated by a previous lot of this antibody (A302-275A) and rabbit anti-CAP-H2 antibody Brother. For blotting immunoprecipitated CAP-H2, A302-275A was used at 0.1  $\mu$ g/ml. *Detection:* Chemiluminescence with an exposure time of 1 second.



**Detection of human CAP-H2 by immunohistochemistry.** *Sample:* FFPE section of human lung cancer. *Antibody:* Affinity purified rabbit anti-CAP-H2 (Cat. No. A302-275A Lot2) used at a dilution of 1:1,000 (1  $\mu$ g/ml). *Detection:* DAB