

ARA70 Antibody

Rabbit Polyclonal

Antigen Affinity Purified

Protein ID NP_005428.1

Catalog No. A302-271A-T

GeneID 8031

Lot No. A302-271A-T-1



APPLICATIONS	IP, IHC
SPECIES REACTIVITY	Human
AMOUNT	10 µl
CONCENTRATION	1000 µg/ml
STORAGE/SHELF LIFE	2 - 8° C / 1 year from date of receipt
PHYSICAL STATE	Liquid
BUFFER	Tris-citrate/phosphate buffer, pH 7 to 8 containing 0.09% Sodium Azide
ISOTYPE	IgG
ORIGIN	USA

PRODUCTION PROCEDURES Antibody was affinity purified using an epitope specific to ARA70 immobilized on solid support.

The epitope recognized by A302-271A-T maps to a region between residue 500 and 550 of human 70 kDa AR-activator (nuclear receptor coactivator 4) using the numbering given in entry NP_005428.1 (GeneID 8031).

Immunoglobulin concentration was determined by extinction coefficient: absorbance at 280 nm of 1.4 equals 1.0 mg of IgG.

APPLICATIONS Centrifuge tube to remove product from lid. Optimal working dilutions should be determined experimentally by the investigator. Prepare working dilution immediately before use.

Western Blot Not recommended. Use rabbit anti-ARA70 antibody A302-272A-T.

Immunoprecipitation 10 µg/mg lysate

Immunohistochemistry 1:2,000 - 1:10,000. Epitope retrieval with citrate buffer pH 6.0 is recommended for FFPE tissue sections.

APPLICATION NOTES Western blot of immunoprecipitates performed using Normal Pig Serum (Cat. No. S100-020), Goat anti-Rabbit Light Chain HRP Conjugate (Cat. No. A120-113P) and 4-8% SDS-PAGE (link to IP-western blot protocol in Additional Info section below).

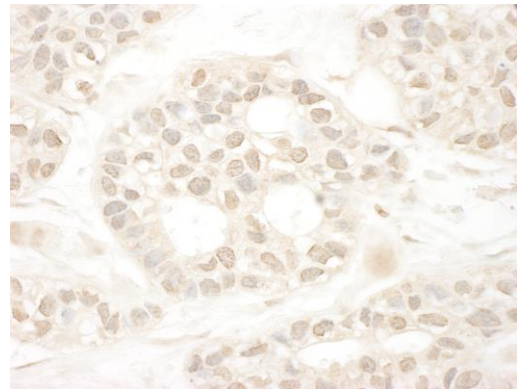
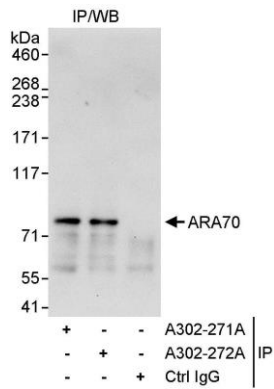
ADDITIONAL INFO <https://www.bethyl.com/product/A302-271A-T>

Use the link above to view SDS, a current list of citations, and other product specific information.

IP-western blot protocol: https://www.bethyl.com/content/protocol_IP_WB

This document certifies that this product has met all of the quality control standards defined by Bethyl Laboratories, Inc.
Eric McIntush, PhD | Chief Scientific Officer

Date: June 21, 2019



Detection of human ARA70 by western blot of immunoprecipitates. *Samples:* Whole cell lysate (1 mg for IP, 20% of IP loaded) from HeLa cells. *Antibody:* Affinity purified rabbit anti-ARA70 antibody A302-271A-T used for IP at 10 µg/mg lysate. ARA70 was also immunoprecipitated by rabbit anti-ARA70 antibody A302-272A, which recognizes a downstream epitope. For blotting immunoprecipitated ARA70, A302-272A was used at 1 µg/ml. *Detection:* Chemiluminescence with an exposure time of 30 seconds.

Detection of human ARA70 by immunohistochemistry. *Samples:* FFPE section of human breast carcinoma. *Antibody:* Affinity purified rabbit anti-ARA70 (Cat. No. A302-271A-T) used at a dilution of 1:5,000 (0.2 µg/ml). *Detection:* DAB