

MLLT1 Antibody

Rabbit Polyclonal

Antigen Affinity Purified

Catalog No. A302-268A

Lot No. A302-268A-2

Protein ID NP_005925.2

GeneID 4298



APPLICATIONS WB, IP, IHC

SPECIES REACTIVITY Human

AMOUNT 100 µl

CONCENTRATION 200 µg/ml

STORAGE/SHELF LIFE 2 – 8° C / 1 year from date of receipt

PHYSICAL STATE Liquid

BUFFER Tris-buffered Saline containing 0.1% BSA and 0.09% Sodium Azide

ISOTYPE IgG

ORIGIN USA

PRODUCTION PROCEDURES Antibody was affinity purified using an epitope specific to MLLT1 immobilized on solid support.

The epitope recognized by A302-268A maps to a region between residue 325 and 375 of human myeloid/lymphoid or mixed-lineage leukemia (trithorax homolog, Drosophila); translocated to, 1 using the numbering given in entry NP_005925.2 (GeneID 4298).

Immunoglobulin concentration was determined by extinction coefficient: absorbance at 280 nm of 1.4 equals 1.0 mg of IgG.

APPLICATIONS Centrifuge tube to remove product from lid. Optimal working dilutions should be determined experimentally by the investigator. Prepare working dilution immediately before use.

Western Blot 1:2,000 – 1:10,000

Immunoprecipitation 2 – 10 µg/mg lysate

Immunohistochemistry 1:100 – 1:500. Epitope retrieval with citrate buffer pH 6.0 is recommended for FFPE tissue sections.

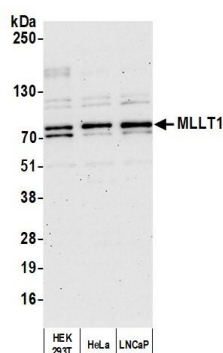
IHC HUMAN CONTROLS Testicular Seminoma

ADDITIONAL INFO <https://www.bethyl.com/product/A302-268A>

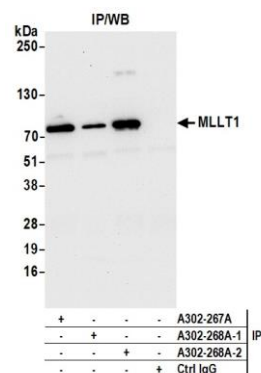
Use the link above to view SDS, a current list of citations, and other product specific information.

IP-western blot protocol: https://www.bethyl.com/content/protocol_IP_WB

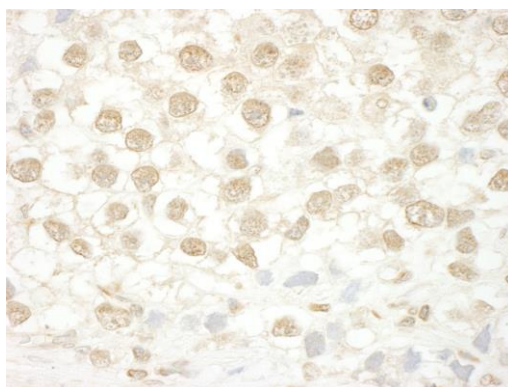
This document certifies that this product has met all of the quality control standards defined by Bethyl Laboratories, Inc.
Brian McWilliams, PhD Date: July 9, 2021



Detection of human MLLT1 by western blot. *Samples:* Whole cell lysate (10 µg) from HEK293T, HeLa, and LNCaP cells prepared using NETN lysis buffer. *Antibody:* Affinity purified rabbit anti-MLLT1 antibody (A302-268A lot 2) used for WB at 0.04 µg/ml. *Detection:* Chemiluminescence with an exposure time of 75 seconds.



Detection of human MLLT1 by western blot of immunoprecipitates. *Samples:* Whole cell lysate (1.0 mg per IP reaction; 20% of IP loaded) from HeLa cells prepared using NETN lysis buffer. *Antibodies:* Affinity purified rabbit anti-MLLT1 antibody (A302-268A lot 2) used for IP at 6 µg per reaction. MLLT1 was also immunoprecipitated by a previous lot of this antibody (A302-268A lot 1) and a second antibody against a different epitope of MLLT1 (A302-267A). For blotting immunoprecipitated MLLT1, A302-268A was used at 0.04 µg/ml. *Detection:* Chemiluminescence with an exposure time of 10 seconds.



Detection of human MLLT1 by immunohistochemistry. *Sample:* FFPE section of human testicular seminoma. *Antibody:* Affinity purified rabbit anti-MLLT1 (Cat. No. A302-268A Lot1) used at a dilution of 1:200 (1 µg/ml). *Detection:* DAB