

# SASH1 Antibody

Rabbit Polyclonal

Antigen Affinity Purified

Protein ID NP\_056093.3

Catalog No. A302-266A

GeneID 23328

Lot No. A302-266A-1



<b>APPLICATIONS</b>	IP, IHC, IHC-IF
<b>SPECIES REACTIVITY</b>	Human
<b>AMOUNT</b>	100 µl
<b>CONCENTRATION</b>	1000 µg/ml
<b>STORAGE/SHELF LIFE</b>	2 - 8° C / 1 year from date of receipt
<b>PHYSICAL STATE</b>	Liquid
<b>BUFFER</b>	Tris-citrate/phosphate buffer, pH 7 to 8 containing 0.09% Sodium Azide
<b>ISOTYPE</b>	IgG
<b>ORIGIN</b>	USA
<b>PRODUCTION PROCEDURES</b>	Antibody was affinity purified using an epitope specific to SASH1 immobilized on solid support.  The epitope recognized by A302-266A maps to a region between residue 750 and 800 of human SAM and SH3 domain containing 1 using the numbering given in entry NP_056093.3 (GeneID 23328).

Immunoglobulin concentration was determined by extinction coefficient: absorbance at 280 nm of 1.4 equals 1.0 mg of IgG.

**APPLICATIONS** Centrifuge tube to remove product from lid. Optimal working dilutions should be determined experimentally by the investigator. Prepare working dilution immediately before use.

Western Blot Not recommended. Use rabbit anti-SASH1 antibody A302-265A.

Immunoprecipitation 3 - 5 µg/mg lysate

Immunohistochemistry 1:500 - 1:2,000. Epitope retrieval with citrate buffer pH 6.0 is recommended for FFPE tissue sections.

Immunofluorescence (IHC) 1:250 - 1:1,000

**APPLICATION NOTES** Western blot of immunoprecipitates performed using Normal Pig Serum (Cat. No. S100-020), Goat anti-Rabbit Light Chain HRP Conjugate (Cat. No. A120-113P) and 4-8% SDS-PAGE (link to IP-western blot protocol in Additional Info section below).

**IHC HUMAN CONTROLS** Breast Carcinoma

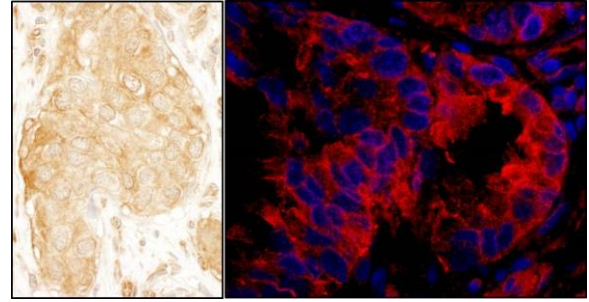
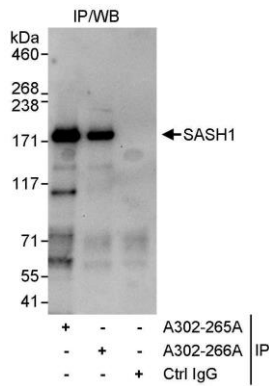
**ADDITIONAL INFO** <https://www.bethyl.com/product/A302-266A>

Use the link above to view SDS, a current list of citations, and other product specific information.

IP-western blot protocol: [https://www.bethyl.com/content/protocol\\_IP\\_WB](https://www.bethyl.com/content/protocol_IP_WB)

This document certifies that this product has met all of the quality control standards defined by Bethyl Laboratories, Inc.  
Eric McIntush, PhD | Chief Scientific Officer

Date: June 21, 2019



**Detection of human SASH1 by western blot of immunoprecipitates.** *Samples:* Whole cell lysate (1 mg for IP, 20% of IP loaded) from HeLa cells. *Antibodies:* Affinity purified rabbit anti-SASH1 antibody A302-266A used for IP at 3  $\mu\text{g}/\text{mg}$  lysate. SASH1 was also immunoprecipitated by rabbit anti-SASH1 antibody A302-265A, which recognizes an upstream epitope. For blotting immunoprecipitated SASH1, A320-265A was used at 1  $\mu\text{g}/\text{ml}$ . *Detection:* Chemiluminescence with an exposure time of 30 seconds.

**Detection of human SASH1 by immunohistochemistry.** *Sample:* FFPE sections of human breast carcinoma (left) and lung carcinoma (right). *Antibody:* Affinity purified rabbit anti-SASH1 (Cat. No. A302-266A Lot1) used at a dilution of 1:1,000 (1  $\mu\text{g}/\text{ml}$ ) and 1:400 (2.5  $\mu\text{g}/\text{ml}$ ). *Detection:* DAB and Red-fluorescent goat anti-rabbit IgG-heavy and light chain, cross-adsorbed Antibody DyLight® 594 Conjugated used at a dilution of 1:100.