

SET Antibody

Rabbit Polyclonal

Antigen Affinity Purified

Protein ID NP_001116293.1

Catalog No. A302-261A

GeneID 6418

Lot No. A302-261A-3



APPLICATIONS	WB, IP, IHC
SPECIES REACTIVITY	Human, Mouse
PRESUMED REACTIVITY	Based on 100% sequence identity, this antibody is predicted to react with Rat
AMOUNT	100 µl
CONCENTRATION	200 µg/ml
STORAGE/SHELF LIFE	2 – 8° C / 1 year from date of receipt
PHYSICAL STATE	Liquid
BUFFER	Tris-buffered Saline containing 0.1% BSA and 0.09% Sodium Azide
ISOTYPE	IgG
ORIGIN	USA
PRODUCTION PROCEDURES	Antibody was affinity purified using an epitope specific to SET immobilized on solid support.

The epitope recognized by A302-261A maps to a region between residue 125 and 175 of human SET nuclear oncogene using the numbering given in entry NP_001116293.1 (GeneID 6418).

Immunoglobulin concentration was determined by extinction coefficient: absorbance at 280 nm of 1.4 equals 1.0 mg of IgG.

APPLICATIONS Centrifuge tube to remove product from lid. Optimal working dilutions should be determined experimentally by the investigator. Prepare working dilution immediately before use.

Western Blot 1:2,000 – 1:10,000

Immunoprecipitation 2 – 10 µg/mg lysate

Immunohistochemistry 1:500 – 1:2,000. Epitope retrieval with citrate buffer pH 6.0 is recommended for FFPE tissue sections.

IHC HUMAN CONTROLS Breast Carcinoma, Colon Carcinoma, Ovarian Carcinoma, Prostate Carcinoma

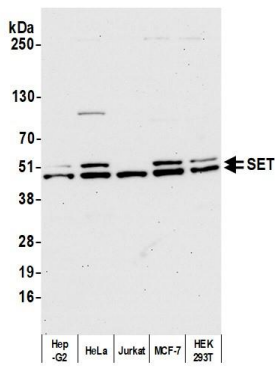
IHC MOUSE CONTROLS Plasmacytoma, Renal Cell Carcinoma

ADDITIONAL INFO <https://www.bethyl.com/product/A302-261A>

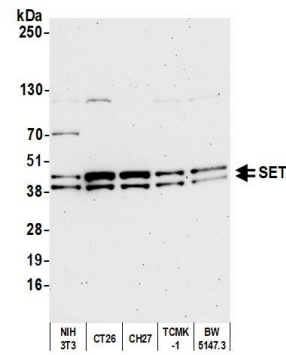
Use the link above to view SDS, a current list of citations, and other product specific information.

IP-western blot protocol: https://www.bethyl.com/content/protocol_IP_WB

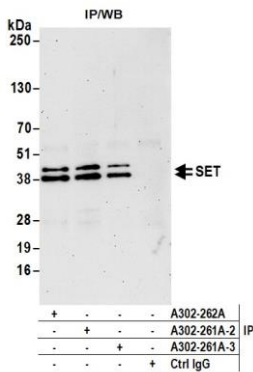
This document certifies that this product has met all of the quality control standards defined by Bethyl Laboratories, Inc.
Eric McIntush, PhD | Chief Scientific Officer Date: October 15, 2020



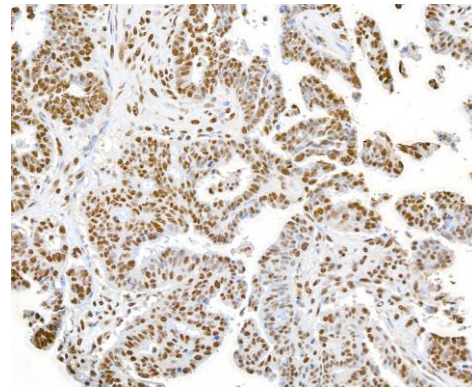
Detection of human SET by western blot. *Samples:* Whole cell lysate (10 µg) from Hep-G2, HeLa, Jurkat, MCF-7, and HEK293T cells prepared using NETN lysis buffer. *Antibody:* Affinity purified rabbit anti-SET antibody A302-261A (lot A302-261A-3) used for WB at 0.04 µg/ml. *Detection:* Chemiluminescence with an exposure time of 30 seconds.



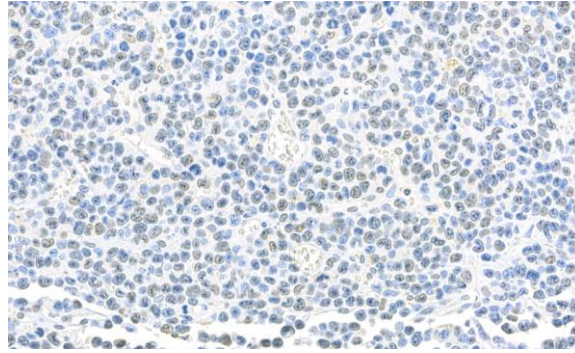
Detection of mouse SET by western blot. *Samples:* Whole cell lysate (10 µg) from NIH 3T3, CT26, CH27, TCMK-1, and BW5147.3 cells prepared using NETN lysis buffer. *Antibody:* Affinity purified rabbit anti-SET antibody A302-261A (lot A302-261A-3) used for WB at 0.04 µg/ml. *Detection:* Chemiluminescence with an exposure time of 75 seconds.



Detection of human SET by western blot of immunoprecipitates. *Samples:* Whole cell lysate (1.0 mg per IP reaction; 20% of IP loaded) from HEK293T cells prepared using NETN lysis buffer. *Antibodies:* Affinity purified rabbit anti-SET antibody A302-261A (lot A302-261A-3) used for IP at 6 µg per reaction. SET was also immunoprecipitated by a previous lot of this antibody (lot A302-261A-2) and rabbit anti-SET antibody A302-262A. For blotting immunoprecipitated SET, A302-261A was used at 0.04 µg/ml. *Detection:* Chemiluminescence with an exposure time of 75 seconds.



Detection of human SET by immunohistochemistry. *Sample:* FFPE section of human ovarian carcinoma. *Antibody:* Affinity purified rabbit anti-SET (Cat. No. A302-261A Lot3) used at a dilution of 1:1,000 (0.2µg/ml). *Detection:* DAB



Detection of mouse SET by immunohistochemistry.

Sample: FFPE section of mouse plasmacytoma. *Antibody:* Affinity purified rabbit anti-SET (Cat. No. A302-261A Lot3) used at a dilution of 1:1,000 (0.2µg/ml). *Detection:* DAB