

BAP1 Antibody

Rabbit Polyclonal

Antigen Affinity Purified

Protein ID NP_004647.1

Catalog No. A302-243A

GeneID 8314

Lot No. A302-243A-1



APPLICATIONS	WB, IP, IHC
SPECIES REACTIVITY	Human
PRESUMED REACTIVITY	Based on 100% sequence identity, this antibody is predicted to react with Mouse, Rat, Zebrafish, X. tropicalis, Chicken and Bovine
AMOUNT	100 µl
CONCENTRATION	1000 µg/ml
STORAGE/SHELF LIFE	2 – 8° C / 1 year from date of receipt
PHYSICAL STATE	Liquid
BUFFER	Tris-citrate/phosphate buffer, pH 7 to 8 containing 0.09% Sodium Azide
ISOTYPE	IgG
ORIGIN	USA
PRODUCTION PROCEDURES	Antibody was affinity purified using an epitope specific to BAP1 immobilized on solid support.

The epitope recognized by A302-243A maps to a region between residue 679 and 729 of human BRCA1-associated protein 1 using the numbering given in entry NP_004647.1 (GeneID 8314).

Immunoglobulin concentration was determined by extinction coefficient: absorbance at 280 nm of 1.4 equals 1.0 mg of IgG.

APPLICATIONS Centrifuge tube to remove product from lid. Optimal working dilutions should be determined experimentally by the investigator. Prepare working dilution immediately before use.

Western Blot 1:2,000 – 1:10,000

Immunoprecipitation 5 – 10 µg/mg lysate

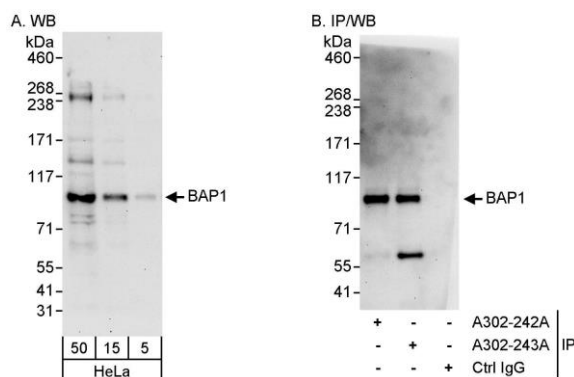
Immunohistochemistry 1:200 to 1:1,000. Epitope retrieval with Tris-EDTA pH9.0 is recommended for FFPE tissue sections.

IHC HUMAN CONTROLS Lung Carcinoma, Melanoma, Prostate Carcinoma, Testis

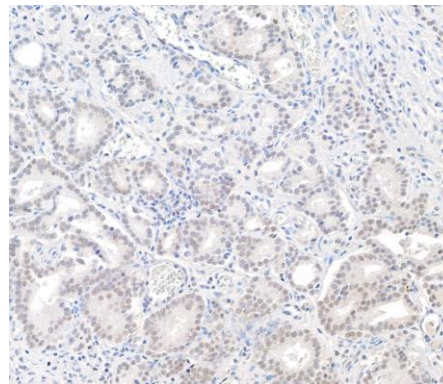
ADDITIONAL INFO <https://www.bethyl.com/product/A302-243A>

Use the link above to view SDS, a current list of citations, and other product specific information.
IP-western blot protocol: https://www.bethyl.com/content/protocol_IP_WB

This document certifies that this product has met all of the quality control standards defined by Bethyl Laboratories, Inc.
Eric McIntush, PhD | Chief Scientific Officer Date: October 8, 2020



Detection of human BAP1 by western blot and immunoprecipitation. *Samples:* Whole cell lysate (5, 15 and 50 µg for WB; 1 mg for IP, 20% of IP loaded) from HeLa cells. *Antibodies:* Affinity purified rabbit anti-BAP1 antibody (A302-243A Lot 1) used for WB at 0.4 µg/ml (A) and 1 µg/ml (B) and used for IP at 10 µg/mg lysate. BAP1 was also immunoprecipitated by rabbit anti-BAP1 antibody A302-242A, which recognizes an upstream epitope. *Detection:* Chemiluminescence with exposure times of 30 seconds (A and B).



Detection of human BAP1 in FFPE prostate carcinoma by IHC. *Antibody:* Rabbit anti-BAP1 antibody (A302-243A Lot 1). *Secondary:* HRP-conjugated goat anti-rabbit IgG (A120-501P). *Substrate:* DAB.