

SMG9 Antibody

Rabbit Polyclonal

Antigen Affinity Purified

Protein ID NP_061981.2

Catalog No. A302-210A

GeneID 56006

Lot No. A302-210A-1



APPLICATIONS	IP, IHC
SPECIES REACTIVITY	Human
PRESUMED REACTIVITY	Based on 100% sequence identity, this antibody is predicted to react with Mouse, Rat and Bovine
AMOUNT	100 µl
CONCENTRATION	1000 µg/ml
STORAGE/SHELF LIFE	2 - 8° C / 1 year from date of receipt
PHYSICAL STATE	Liquid
BUFFER	Tris-citrate/phosphate buffer, pH 7 to 8 containing 0.09% Sodium Azide
ISOTYPE	IgG
ORIGIN	USA

PRODUCTION PROCEDURES Antibody was affinity purified using an epitope specific to SMG9 immobilized on solid support.

The epitope recognized by A302-210A maps to a region between residue 75 and 125 of human suppressor with morphogenetic effect on genitalia protein 9 using the numbering given in entry NP_061981.2 (GeneID 56006).

Immunoglobulin concentration was determined by extinction coefficient: absorbance at 280 nm of 1.4 equals 1.0 mg of IgG.

APPLICATIONS Centrifuge tube to remove product from lid. Optimal working dilutions should be determined experimentally by the investigator. Prepare working dilution immediately before use.

Western Blot Not recommended. A302-210A has not performed satisfactorily when used for WB of SMG9 in crude preparations (e.g. whole cell lysate). This antibody can be used for WB of enriched (e.g. immunoprecipitated) sources of SMG9.

Immunoprecipitation 5 - 10 µg/mg lysate

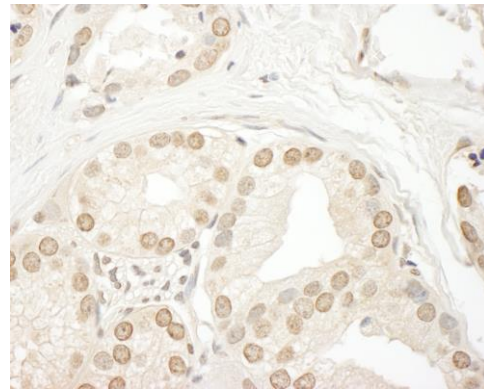
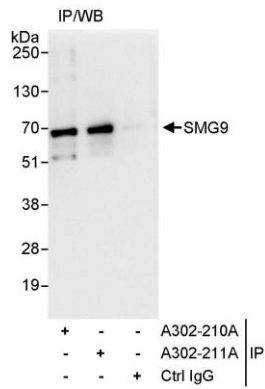
Immunohistochemistry 1:2,000 - 1:10,000. Epitope retrieval with citrate buffer pH 6.0 is recommended for FFPE tissue sections.

APPLICATION NOTES Western blot of immunoprecipitates performed using Normal Pig Serum (Cat. No. S100-020), Goat anti-Rabbit Light Chain HRP Conjugate (Cat. No. A120-113P) and 4-20% SDS-PAGE (link to IP-western blot protocol in Additional Info section below).

IHC HUMAN CONTROLS Ovarian Carcinoma, Prostate Carcinoma

ADDITIONAL INFO <https://www.bethyl.com/product/A302-210A>
Use the link above to view SDS, a current list of citations, and other product specific information.
IP-western blot protocol: https://www.bethyl.com/content/protocol_IP_WB

This document certifies that this product has met all of the quality control standards defined by Bethyl Laboratories, Inc.
Eric McIntush, PhD | Chief Scientific Officer Date: June 21, 2019



Detection of human SMG9 by western blot of immunoprecipitates. *Samples:* Whole cell lysate (1 mg for IP, 20% of IP loaded) from HeLa cells. *Antibodies:* Affinity purified rabbit anti-SMG9 antibody A302-210A used for IP at 10 µg/mg lysate. SMG9 was also immunoprecipitated by rabbit anti-SMG9 antibody A302-211A, which recognizes a downstream epitope. For blotting immunoprecipitated SMG9, A302-210A was used at 1 µg/ml. *Detection:* Chemiluminescence with an exposure time of 1 seconds.

Detection of human SMG9 by immunohistochemistry. *Sample:* FFPE section of human prostate carcinoma. *Antibody:* Affinity purified rabbit anti-SMG9 (Cat. No. A302-210A Lot1) used at a dilution of 1:5,000 (0.2 µg/ml). *Detection:* DAB