

BCCIP Antibody

Rabbit Polyclonal

Antigen Affinity Purified Protein ID NP_510868.1
Catalog No. A302-196A GeneID 56647
Lot No. A302-196A-1



APPLICATIONS WB, IP
SPECIES REACTIVITY Human
AMOUNT 100 µl
CONCENTRATION 200 µg/ml
STORAGE/SHELF LIFE 2 - 8° C / 1 year from date of receipt
PHYSICAL STATE Liquid
BUFFER Tris-buffered Saline containing 0.1% BSA and 0.09% Sodium Azide
ISOTYPE IgG
ORIGIN USA
PRODUCTION PROCEDURES Antibody was affinity purified using an epitope specific to BCCIP immobilized on solid support.

The epitope recognized by A302-196A maps to a region between residue 1 and 50 of human BRCA2 and CDKN1A interacting protein using the numbering given in entry NP_510868.1 (GeneID 56647).

Immunoglobulin concentration was determined by extinction coefficient: absorbance at 280 nm of 1.4 equals 1.0 mg of IgG.

APPLICATIONS Centrifuge tube to remove product from lid. Optimal working dilutions should be determined experimentally by the investigator. Prepare working dilution immediately before use.

Western Blot 1:2,000 - 1:10,000

Immunoprecipitation 2 - 5 µg/mg lysate

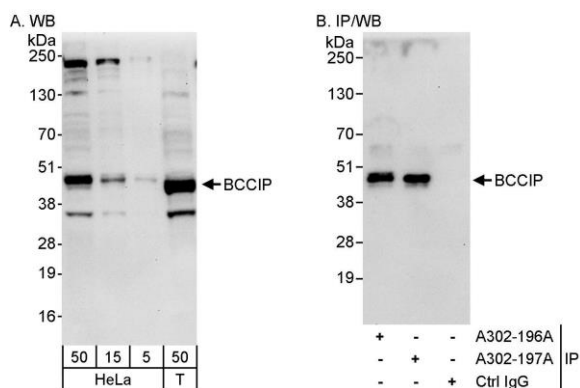
APPLICATION NOTES Western blot of immunoprecipitates performed using Normal Pig Serum (Cat. No. S100-020), Goat anti-Rabbit Light Chain HRP Conjugate (Cat. No. A120-113P) and 4-20% SDS-PAGE (link to IP-western blot protocol in Additional Info section below).

Western blot of lysates performed using standard western blot reagents and 4-20% SDS-PAGE.

IHC HUMAN CONTROLS Breast Carcinoma, Colon Carcinoma, Prostate Carcinoma, Testicular Seminoma

ADDITIONAL INFO <https://www.bethyl.com/product/A302-196A>
Use the link above to view SDS, a current list of citations, and other product specific information.
IP-western blot protocol: https://www.bethyl.com/content/protocol_IP_WB

This document certifies that this product has met all of the quality control standards defined by Bethyl Laboratories, Inc.
Eric McIntush, PhD | Chief Scientific Officer Date: June 21, 2019



Detection of human BCCIP by western blot and immunoprecipitation. *Samples:* Whole cell lysate from HeLa (5, 15 and 50 μ g for WB; 1 mg for IP, 20% of IP loaded) and HEK293T (T; 50 μ g) cells. *Antibodies:* Affinity purified rabbit anti-BCCIP antibody A302-196A used for WB at 0.04 μ g/ml (A) and 1 μ g/ml (B) and used for IP at 3 μ g/mg lysate. BCCIP was also immunoprecipitated by rabbit anti-BCCIP antibody A302-197A, which recognizes a downstream epitope. *Detection:* Chemiluminescence with exposure times of 30 seconds (A) and 10 seconds (B).