

PBK Antibody

Rabbit Polyclonal

Antigen Affinity Purified

Protein ID NP_060962.2

Catalog No. A302-195A

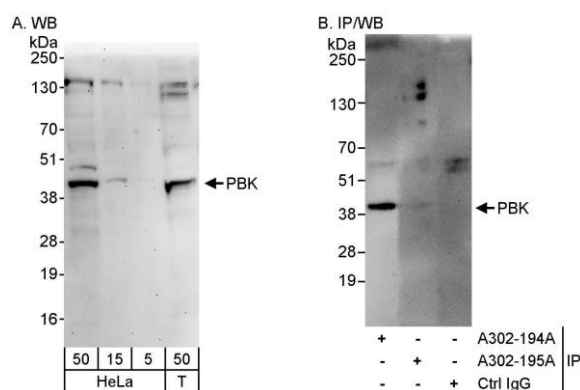
GeneID 55872

Lot No. A302-195A-1

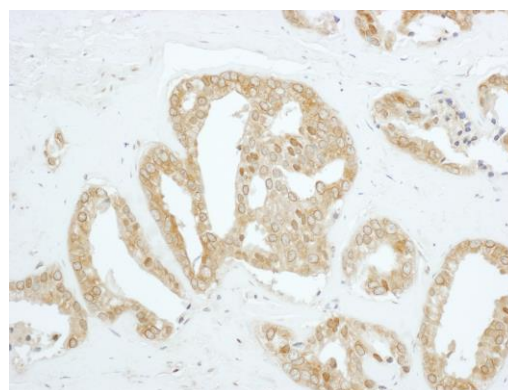


APPLICATIONS	WB, IHC
SPECIES REACTIVITY	Human
AMOUNT	100 µl
CONCENTRATION	1000 µg/ml
STORAGE/SHELF LIFE	2 - 8° C / 1 year from date of receipt
PHYSICAL STATE	Liquid
BUFFER	Tris-citrate/phosphate buffer, pH 7 to 8 containing 0.09% Sodium Azide
ISOTYPE	IgG
ORIGIN	USA
PRODUCTION PROCEDURES	Antibody was affinity purified using an epitope specific to PBK immobilized on solid support. The epitope recognized by A302-195A maps to a region between residue 200 and 250 of human PDZ binding kinase using the numbering given in entry NP_060962.2 (GeneID 55872). Immunoglobulin concentration was determined by extinction coefficient: absorbance at 280 nm of 1.4 equals 1.0 mg of IgG.
APPLICATIONS	Centrifuge tube to remove product from lid. Optimal working dilutions should be determined experimentally by the investigator. Prepare working dilution immediately before use. Western Blot 1:2,000 – 1:10,000 Immunoprecipitation Not recommended. Use rabbit anti-PBK antibody A302-194A. Immunohistochemistry 1:500 – 1:2,000. Epitope retrieval with citrate buffer pH 6.0 is recommended for FFPE tissue sections.
APPLICATION NOTES	Western blot of lysates performed using standard western blot reagents and 4-20% SDS-PAGE.
IHC HUMAN CONTROLS	Ovarian Carcinoma, Placenta, Prostate Carcinoma
ADDITIONAL INFO	https://www.bethyl.com/product/A302-195A Use the link above to view SDS, a current list of citations, and other product specific information.

This document certifies that this product has met all of the quality control standards defined by Bethyl Laboratories, Inc.
Eric McIntush, PhD | Chief Scientific Officer Date: June 21, 2019



Detection of human PBK by western blot and immunoprecipitation. *Samples:* Whole cell lysate (5, 15 and 50 μ g for WB; 1 mg for IP, 20% of IP loaded) from HeLa and HEK293T (T; 50 μ g) cells. *Antibodies:* Affinity purified rabbit anti-PBK antibody A302-195A used for WB at 0.1 μ g/ml (A) and 1 μ g/ml (B) and used for IP at 3 μ g/mg lysate. PBK was successfully immunoprecipitated by rabbit anti-PBK antibody A302-194A, which recognizes an upstream epitope. *Detection:* Chemiluminescence with exposure times of 3 minutes (A) and 30 seconds (B).



Detection of human PBK by immunohistochemistry. *Sample:* FFPE section of human prostate carcinoma. *Antibody:* Affinity purified rabbit anti-PBK (Cat. No. A302-195A Lot1) used at a dilution of 1:1,000 (1 μ g/ml). *Detection:* DAB