

PBK Antibody

Rabbit Polyclonal

Antigen Affinity Purified

Protein ID NP_060962.2

Catalog No. A302-195A-T

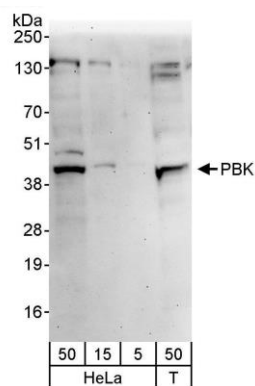
GeneID 55872

Lot No. A302-195A-T-1



APPLICATIONS	WB, IHC
SPECIES REACTIVITY	Human
AMOUNT	20 µl (2 blots)
CONCENTRATION	100 µg/ml
STORAGE/SHELF LIFE	2 - 8° C / 1 year from date of receipt
PHYSICAL STATE	Liquid
BUFFER	Tris-buffered Saline containing 0.1% BSA and 0.09% Sodium Azide
ISOTYPE	IgG
ORIGIN	USA
PRODUCTION PROCEDURES	Antibody was affinity purified using an epitope specific to PBK immobilized on solid support. The epitope recognized by A302-195A-T maps to a region between residue 200 and 250 of human PDZ binding kinase using the numbering given in entry NP_060962.2 (GeneID 55872).
APPLICATIONS	Centrifuge tube to remove product from lid. Optimal working dilutions should be determined experimentally by the investigator. Prepare working dilution immediately before use. Western Blot 1:1000 Immunoprecipitation Not recommended Immunohistochemistry 1:50 - 1:200. Epitope retrieval with citrate buffer pH 6.0 is recommended for FFPE tissue sections.
APPLICATION NOTES	Western blot of lysates performed using standard western blot reagents and 4-20% SDS-PAGE.
ADDITIONAL INFO	https://www.bethyl.com/product/A302-195A-T Use the link above to view SDS, a current list of citations, and other product specific information.

This document certifies that this product has met all of the quality control standards defined by Bethyl Laboratories, Inc.
Eric McIntush, PhD | Chief Scientific Officer Date: June 21, 2019



Detection of human PBK by western blot. *Samples:* Whole cell lysate (5, 15, and 50 µg) from HeLa and HEK293T (T; 50 µg) cells. *Antibody:* Affinity purified rabbit anti-PBK antibody A302-195A-T used at 1:1000. *Detection:* Chemiluminescence with an exposure time of 3 minutes.