

# PBK Antibody

Rabbit Polyclonal

Antigen Affinity Purified

Protein ID NP\_060962.2

Catalog No. A302-195A-M

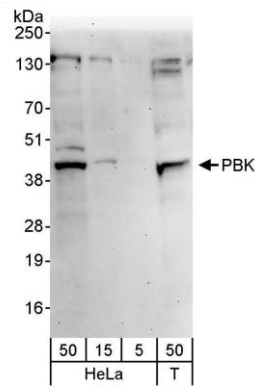
GeneID 55872

Lot No. A302-195A-M-1



<b>APPLICATIONS</b>	WB, IHC
<b>SPECIES REACTIVITY</b>	Human
<b>AMOUNT</b>	100 $\mu$ l (10 blots)
<b>CONCENTRATION</b>	100 $\mu$ g/ml
<b>STORAGE/SHELF LIFE</b>	2 - 8° C / 1 year from date of receipt
<b>PHYSICAL STATE</b>	Liquid
<b>BUFFER</b>	Tris-buffered Saline containing 0.1% BSA and 0.09% Sodium Azide
<b>ISOTYPE</b>	IgG
<b>ORIGIN</b>	USA
<b>PRODUCTION PROCEDURES</b>	Antibody was affinity purified using an epitope specific to PBK immobilized on solid support.  The epitope recognized by A302-195A-M maps to a region between residue 200 and 250 of human PDZ binding kinase using the numbering given in entry NP_060962.2 (GeneID 55872).
<b>APPLICATIONS</b>	Centrifuge tube to remove product from lid. Optimal working dilutions should be determined experimentally by the investigator. Prepare working dilution immediately before use.  Western Blot 1:1000  Immunoprecipitation Not recommended  Immunohistochemistry 1:50 - 1:200. Epitope retrieval with citrate buffer pH 6.0 is recommended for FFPE tissue sections.
<b>APPLICATION NOTES</b>	Western blot of lysates performed using standard western blot reagents and 4-20% SDS-PAGE.
<b>ADDITIONAL INFO</b>	<a href="https://www.bethyl.com/product/A302-195A-M">https://www.bethyl.com/product/A302-195A-M</a> Use the link above to view SDS, a current list of citations, and other product specific information.

This document certifies that this product has met all of the quality control standards defined by Bethyl Laboratories, Inc.  
Eric McIntush, PhD | Chief Scientific Officer Date: June 21, 2019



**Detection of human PBK by western blot.** *Samples:* Whole cell lysate (5, 15, and 50 µg) from HeLa and HEK293T (T; 50 µg) cells. *Antibody:* Affinity purified rabbit anti-PBK antibody A302-195A-M used at 1:1000. *Detection:* Chemiluminescence with an exposure time of 3 minutes.