

TOPORS Antibody

Rabbit Polyclonal

Antigen Affinity Purified

Protein ID NP_005793.2

Catalog No. A302-179A

GeneID 10210

Lot No. A302-179A-1



APPLICATIONS	WB, IP, IHC
SPECIES REACTIVITY	Human
AMOUNT	100 µl
CONCENTRATION	200 µg/ml
STORAGE/SHELF LIFE	2 - 8° C / 1 year from date of receipt
PHYSICAL STATE	Liquid
BUFFER	Tris-buffered Saline containing 0.1% BSA and 0.09% Sodium Azide
ISOTYPE	IgG
ORIGIN	USA
PRODUCTION PROCEDURES	Antibody was affinity purified using an epitope specific to TOPORS immobilized on solid support.

The epitope recognized by A302-179A maps to a region between residue 995 and 1045 of human topoisomerase I binding, arginine/serine-rich using the numbering given in entry topoisomerase I binding, arginine/serine-rich NP_005793.2 (GeneID 10210).

Immunoglobulin concentration was determined by extinction coefficient: absorbance at 280 nm of 1.4 equals 1.0 mg of IgG.

APPLICATIONS Centrifuge tube to remove product from lid. Optimal working dilutions should be determined experimentally by the investigator. Prepare working dilution immediately before use.

Western Blot 1:2,000 - 1:10,000

Immunoprecipitation 5 - 15 µg/mg lysate

Immunohistochemistry 1:100 - 1:500. Epitope retrieval with citrate buffer pH 6.0 is recommended for FFPE tissue sections.

APPLICATION NOTES Western blot of immunoprecipitates performed using Normal Pig Serum (Cat. No. S100-020), Goat anti-Rabbit Light Chain HRP Conjugate (Cat. No. A120-113P) and 4-8% SDS-PAGE (link to IP-western blot protocol in Additional Info section below).

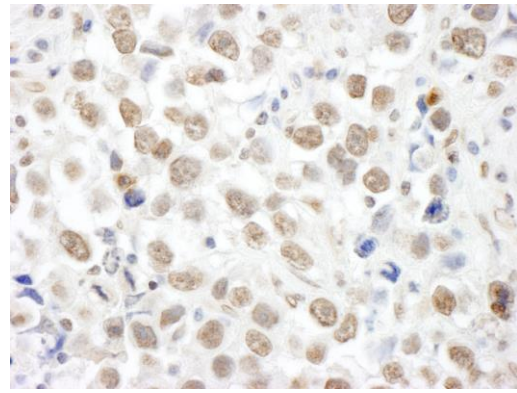
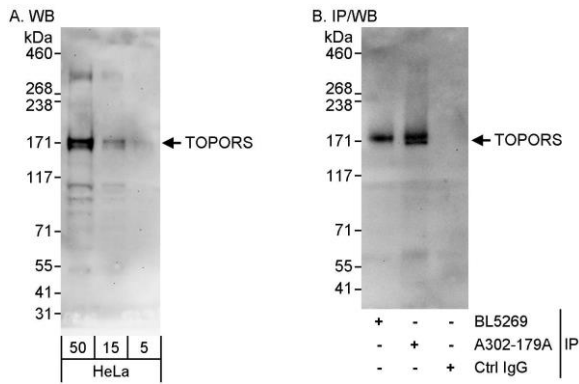
IHC HUMAN CONTROLS Western blot of lysates performed using standard western blot reagents and 4-8% SDS-PAGE. Breast Carcinoma, Prostate Carcinoma, Testicular Seminoma, K-562 Cells

ADDITIONAL INFO <https://www.bethyl.com/product/A302-179A>

Use the link above to view SDS, a current list of citations, and other product specific information.

IP-western blot protocol: https://www.bethyl.com/content/protocol_IP_WB

This document certifies that this product has met all of the quality control standards defined by Bethyl Laboratories, Inc.
Eric McIntush, PhD | Chief Scientific Officer Date: June 21, 2019



Detection of human TOPORS by western blot and immunoprecipitation. *Samples:* Whole cell lysate (5, 15 and 50 µg for WB; 1 mg for IP, 20% of IP loaded) from HeLa cells. *Antibodies:* Affinity purified rabbit anti-TOPORS antibody A302-179A used for WB at 0.04 µg/ml (A) and 1 µg/ml (B) and used for IP at 10 µg/mg lysate. TOPORS was also immunoprecipitated by rabbit anti-TOPORS antibody BL5269, which recognizes an upstream epitope. *Detection:* Chemiluminescence with exposure times of 1 minute (A) and 30 seconds (B).

Detection of human TOPORS by immunohistochemistry. *Sample:* FFPE section of human testicular seminoma. *Antibody:* Affinity purified rabbit anti-TOPORS (Cat. No. A302-179A Lot1) used at a dilution of 1:200 (1 µg/ml). *Detection:* DAB