

SPHK1 Antibody

Rabbit Polyclonal

Antigen Affinity Purified

Protein ID NP_001136073.1

Catalog No. A302-176A

GeneID 8877

Lot No. A302-176A-1



APPLICATIONS	IP
SPECIES REACTIVITY	Human
AMOUNT	100 µl
CONCENTRATION	1000 µg/ml
STORAGE/SHELF LIFE	2 - 8° C / 1 year from date of receipt
PHYSICAL STATE	Liquid
BUFFER	Tris-citrate/phosphate buffer, pH 7 to 8 containing 0.09% Sodium Azide
ISOTYPE	IgG
ORIGIN	USA
PRODUCTION PROCEDURES	Antibody was affinity purified using an epitope specific to SPHK1 immobilized on solid support.

The epitope recognized by A302-176A maps to a region between residue 1 and 50 of human sphingosine kinase 1 using the numbering given in entry NP_001136073.1 (GeneID 8877).

Immunoglobulin concentration was determined by extinction coefficient: absorbance at 280 nm of 1.4 equals 1.0 mg of IgG.

APPLICATIONS Centrifuge tube to remove product from lid. Optimal working dilutions should be determined experimentally by the investigator. Prepare working dilution immediately before use.

Western Blot Not recommended. Use rabbit anti-SPHK1 antibody A302-177A.

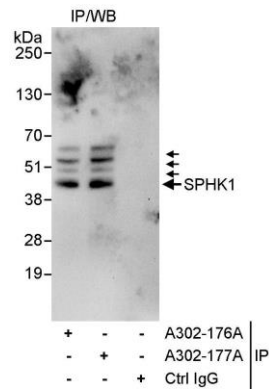
Immunoprecipitation 5 - 15 µg/mg lysate

APPLICATION NOTES Western blot of immunoprecipitates performed using Normal Pig Serum (Cat. No. S100-020), Goat anti-Rabbit Light Chain HRP Conjugate (Cat. No. A120-113P) and 4-20% SDS-PAGE (link to IP-western blot protocol in Additional Info section below).

ADDITIONAL INFO <https://www.bethyl.com/product/A302-176A>

Use the link above to view SDS, a current list of citations, and other product specific information. IP-western blot protocol: https://www.bethyl.com/content/protocol_IP_WB

This document certifies that this product has met all of the quality control standards defined by Bethyl Laboratories, Inc.
Eric McIntush, PhD | Chief Scientific Officer Date: June 21, 2019



Detection of human SPHK1 by western blot of immunoprecipitates. *Samples:* Whole cell lysate (1 mg for IP, 20% of IP loaded) from HeLa cells. *Antibodies:* Affinity purified rabbit anti-SPHK1 antibody A302-176A used for IP at 10 $\mu\text{g}/\text{mg}$ lysate. SPHK1 was also immunoprecipitated by rabbit anti-SPHK1 antibody A302-177A, which recognizes a downstream epitope. For blotting immunoprecipitated SPHK1, A302-177A was used at 1 $\mu\text{g}/\text{ml}$. *Detection:* Chemiluminescence with an exposure time of 30 seconds. *Note:* The more slowly migrating bands are believed to represent additional forms of SPHK1 owing to recognition by multiple antibodies each of which was directed toward distinctly different epitopes on SPHK1.