

Cul5 Antibody

Rabbit Polyclonal

Antigen Affinity Purified

Protein ID NP_003469.2

Catalog No. A302-173A

GeneID 8065

Lot No. A302-173A-2



APPLICATIONS	WB, IP, IHC
SPECIES REACTIVITY	Human, Mouse
PRESUMED REACTIVITY	Based on 100% sequence identity, this antibody is predicted to react with Rat, Rabbit and Orangutan
AMOUNT	100 µl
CONCENTRATION	200 µg/ml
STORAGE/SHELF LIFE	2 – 8° C / 1 year from date of receipt
PHYSICAL STATE	Liquid
BUFFER	Tris-buffered Saline containing 0.1% BSA and 0.09% Sodium Azide
ISOTYPE	IgG
ORIGIN	USA
PRODUCTION PROCEDURES	Antibody was affinity purified using an epitope specific to Cul5 immobilized on solid support.

The epitope recognized by A302-173A maps to a region between residue 1 and 50 of human cullin-5 using the numbering given in entry NP_003469.2 (GeneID 8065).

Immunoglobulin concentration was determined by extinction coefficient: absorbance at 280 nm of 1.4 equals 1.0 mg of IgG.

APPLICATIONS Centrifuge tube to remove product from lid. Optimal working dilutions should be determined experimentally by the investigator. Prepare working dilution immediately before use.

Western Blot 1:2,000 – 1:10,000

Immunoprecipitation 5 – 15 µg/mg lysate

Immunohistochemistry 1:500 – 1:2,000. Epitope retrieval with citrate buffer pH 6.0 is recommended for FFPE tissue sections.

APPLICATION NOTES Western blot of immunoprecipitates performed using Normal Pig Serum (Cat. No. S100-020), Goat anti-Rabbit Light Chain HRP Conjugate (Cat. No. A120-113P) and 4-8% SDS-PAGE (link to IP-western blot protocol in Additional Info section below).

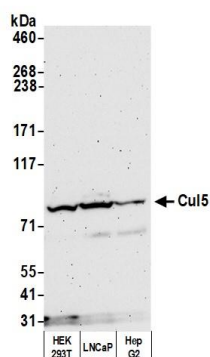
IHC HUMAN CONTROLS Western blot of lysates performed using standard western blot reagents and 4-8% SDS-PAGE. Non-Small Cell Lung Cancer, Ovarian Carcinoma, Prostate Carcinoma

ADDITIONAL INFO <https://www.bethyl.com/product/A302-173A>

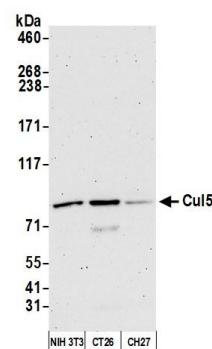
Use the link above to view SDS, a current list of citations, and other product specific information.

IP-western blot protocol: https://www.bethyl.com/content/protocol_IP_WB

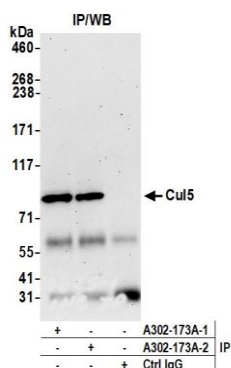
This document certifies that this product has met all of the quality control standards defined by Bethyl Laboratories, Inc.
Eric McIntush, PhD | Chief Scientific Officer Date: September 23, 2020



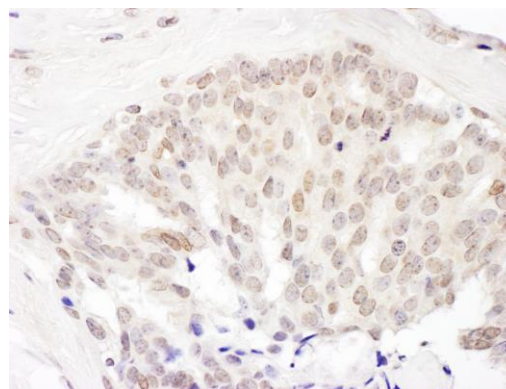
Detection of human Cul5 by western blot. *Samples:* Whole cell lysate (50 µg) from HEK293T, LNCaP, and Hep-G2 cells prepared using NETN lysis buffer. *Antibody:* Affinity purified rabbit anti-Cul5 antibody A302-173A (lot A302-173A-2) used for WB at 0.1 µg/ml. *Detection:* Chemiluminescence with an exposure time of 3 minutes.



Detection of mouse Cul5 by western blot. *Samples:* Whole cell lysate (10 µg) from NIH 3T3, CT26, and CH27 cells prepared using NETN lysis buffer. *Antibody:* Affinity purified rabbit anti-Cul5 antibody A302-173A (lot A302-173A-2) used for WB at 0.1 µg/ml. *Detection:* Chemiluminescence with an exposure time of 3 minutes.



Detection of human Cul5 by western blot of immunoprecipitates. *Samples:* Whole cell lysate (1.0 mg per IP reaction; 20% of IP loaded) from HEK293T cells prepared using NETN lysis buffer. *Antibodies:* Affinity purified rabbit anti-Cul5 antibody A302-173A (lot A302-173A-2) used for IP at 6 µg per reaction. Cul5 was also immunoprecipitated by a previous lot of this antibody (lot A302-173A-1). For blotting immunoprecipitated Cul5, A302-173A was used at 0.1 µg/ml. *Detection:* Chemiluminescence with an exposure time of 75 seconds.



Detection of human Cul5 by immunohistochemistry. *Sample:* FFPE section of human ovarian carcinoma. *Antibody:* Affinity purified rabbit anti-Cul5 (Cat. No. A302-173A) used at a dilution of 1:1,000 (1 µg/ml). *Detection:* DAB