

# IP3R3 Antibody

Rabbit Polyclonal

Antigen Affinity Purified

Protein ID NP\_002215.2

Catalog No. A302-159A

GeneID 3710

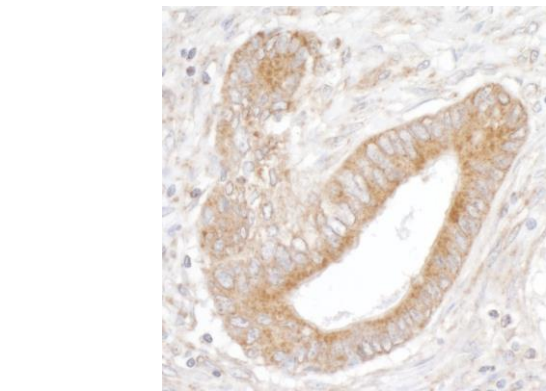
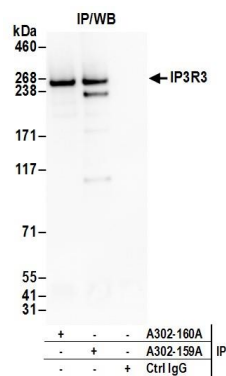
Lot No. A302-159A-2



|                              |   |
|------------------------------|---|
| <b>APPLICATIONS</b>          | IP, IHC   |
| <b>SPECIES REACTIVITY</b>    | Human   |
| <b>AMOUNT</b>                | 100 µl  |
| <b>CONCENTRATION</b>         | 1000 µg/ml  |
| <b>STORAGE/SHELF LIFE</b>    | 2 – 8° C / 1 year from date of receipt  |
| <b>PHYSICAL STATE</b>        | Liquid  |
| <b>BUFFER</b>                | Tris-citrate/phosphate buffer, pH 7 to 8 containing 0.09% Sodium Azide  |
| <b>ISOTYPE</b>               | IgG   |
| <b>ORIGIN</b>                | USA   |
| <b>PRODUCTION PROCEDURES</b> | <p>Antibody was affinity purified using an epitope specific to IP3R3 immobilized on solid support.</p> <p>The epitope recognized by A302-159A maps to a region between residue 625 and 675 of human inositol 1,4,5-triphosphate receptor, type 3 using the numbering given in entry NP_002215.2 (GeneID 3710).</p> <p>Immunoglobulin concentration was determined by extinction coefficient: absorbance at 280 nm of 1.4 equals 1.0 mg of IgG.</p>      |
| <b>APPLICATIONS</b>          | <p>Centrifuge tube to remove product from lid. Optimal working dilutions should be determined experimentally by the investigator. Prepare working dilution immediately before use.</p> <p>Western Blot Not recommended. Use rabbit anti-IP3R3 antibody A302-160A.</p> <p>Immunoprecipitation 2 – 10 µg/mg lysate</p> <p>Immunohistochemistry 1:500 – 1:2,000. Epitope retrieval with citrate buffer pH 6.0 is recommended for FFPE tissue sections.</p> |
| <b>APPLICATION NOTES</b>     | Western blot of immunoprecipitates performed using Normal Pig Serum (Cat. No. S100-020), Goat anti-Rabbit Light Chain HRP Conjugate (Cat. No. A120-113P) and 4-8% SDS-PAGE (link to IP-western blot protocol in Additional Info section below).   |
| <b>IHC HUMAN CONTROLS</b>    | Breast Carcinoma, Colon Carcinoma, Stomach Adenocarcinoma   |
| <b>ADDITIONAL INFO</b>       | <p><a href="https://www.bethyl.com/product/A302-159A">https://www.bethyl.com/product/A302-159A</a></p> <p>Use the link above to view SDS, a current list of citations, and other product specific information.</p> <p>IP-western blot protocol: <a href="https://www.bethyl.com/content/protocol_IP_WB">https://www.bethyl.com/content/protocol_IP_WB</a></p>   |

This document certifies that this product has met all of the quality control standards defined by Bethyl Laboratories, Inc.  
Eric McIntush, PhD | Chief Scientific Officer

Date: June 21, 2019



**Detection of human IP3R3 by western blot of immunoprecipitates.** *Samples:* Whole cell lysate (1.0 mg per IP reaction; 20% of IP loaded) from HeLa cells prepared using NETN lysis buffer. *Antibodies:* Affinity purified rabbit anti-IP3R3 antibody A302-159A (lot A302-159A-2) used for IP at 3 µg per reaction. IP3R3 was also immunoprecipitated by rabbit anti-IP3R3 antibody A302-160A. For blotting immunoprecipitated IP3R3, A302-159A was used at 1 µg/ml. *Detection:* Chemiluminescence with an exposure time of 3 minutes.

**Detection of human IP3R3 by immunohistochemistry.** *Sample:* FFPE section of human stomach carcinoma. *Antibody:* Affinity purified rabbit anti-IP3R3 (Cat. No. A302-159A Lot2) used at a dilution of 1:1,000 (1 µg/ml). *Detection:* DAB