

# IP3R1 Antibody

Rabbit Polyclonal

Antigen Affinity Purified

Protein ID Q14643.2

Catalog No. A302-158A

GeneID 3708

Lot No. A302-158A-1



|                              |   |
|------------------------------|---|
| <b>APPLICATIONS</b>          | WB, IP, IHC, IHC-IF   |
| <b>SPECIES REACTIVITY</b>    | Human, Mouse  |
| <b>PRESUMED REACTIVITY</b>   | Based on 100% sequence identity, this antibody is predicted to react with Rat                   |
| <b>AMOUNT</b>                | 100 µl  |
| <b>CONCENTRATION</b>         | 200 µg/ml   |
| <b>STORAGE/SHELF LIFE</b>    | 2 - 8° C / 1 year from date of receipt  |
| <b>PHYSICAL STATE</b>        | Liquid  |
| <b>BUFFER</b>                | Tris-buffered Saline containing 0.1% BSA and 0.09% Sodium Azide                                 |
| <b>ISOTYPE</b>               | IgG   |
| <b>ORIGIN</b>                | USA   |
| <b>PRODUCTION PROCEDURES</b> | Antibody was affinity purified using an epitope specific to IP3R1 immobilized on solid support. |

The epitope recognized by A302-158A maps to a region between residue 2708 and 2758 of human inositol 1,4,5-trisphosphate receptor type 1 using the numbering given in entry Q14643.2 (GeneID 3708).

Immunoglobulin concentration was determined by extinction coefficient: absorbance at 280 nm of 1.4 equals 1.0 mg of IgG.

**APPLICATIONS** Centrifuge tube to remove product from lid. Optimal working dilutions should be determined experimentally by the investigator. Prepare working dilution immediately before use.

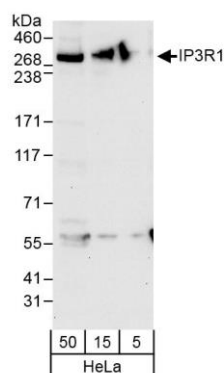
|                          |   |
|--------------------------|---|
| Western Blot             | 1:2,000 – 1:10,000  |
| Immunoprecipitation      | 2 – 5 µg/mg lysate  |
| Immunohistochemistry     | 1:100 – 1:500. Epitope retrieval with Tris-EDTA pH 9.0 is recommended for FFPE tissue sections. |
| Immunofluorescence (IHC) | 1:50 – 1:250  |

**APPLICATION NOTES** Western blot of immunoprecipitates performed using Normal Pig Serum (Cat. No. S100-020), Goat anti-Rabbit Light Chain HRP Conjugate (Cat. No. A120-113P) and 3-8% SDS-PAGE (link to IP-western blot protocol in Additional Info section below).

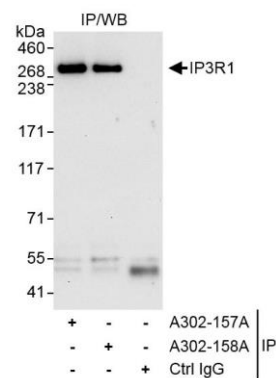
**IHC MOUSE CONTROLS** Western blot of lysates performed using standard western blot reagents and 3-8% SDS-PAGE. Brain

**ADDITIONAL INFO** <https://www.bethyl.com/product/A302-158A>  
Use the link above to view SDS, a current list of citations, and other product specific information.  
IP-western blot protocol [https://www.bethyl.com/content/protocol\\_IP\\_WB](https://www.bethyl.com/content/protocol_IP_WB)

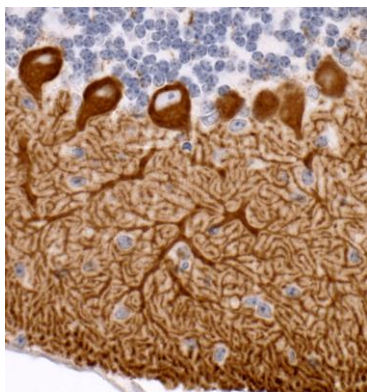
This document certifies that this product has met all of the quality control standards defined by Bethyl Laboratories, Inc.  
Eric McIntush, PhD | Chief Scientific Officer Date: November 12, 2019



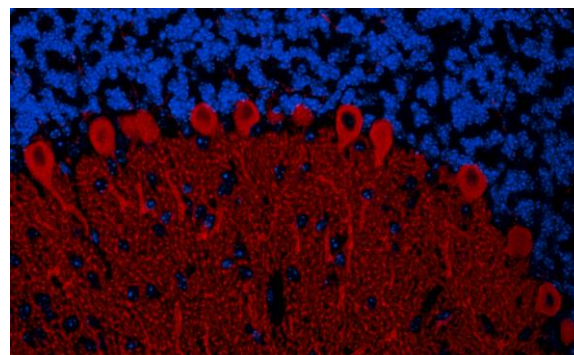
**Detection of human IP3R1 by western blot.** *Samples:* Whole cell lysate (5, 15, and 50 µg) from HeLa cells. *Antibody:* Affinity purified rabbit anti-IP3R1 antibody A302-158A (lot A302-158A-1) used at 0.04 µg/ml. *Detection:* Chemiluminescence with an exposure time of 30 seconds.



**Detection of human IP3R1 by western blot of immunoprecipitates.** *Samples:* Whole cell lysate (1 mg for IP, 20% of IP loaded) from HeLa cells. *Antibodies:* Affinity purified rabbit anti-IP3R1 antibody A302-158A (lot A302-158A-1) used for IP at 3 µg/mg lysate. IP3R1 was also immunoprecipitated by rabbit anti-IP3R1 antibody A302-157A, which recognizes an upstream epitope. For blotting immunoprecipitated IP3R1, A302-158A was used at 0.4 µg/ml. *Detection:* Chemiluminescence with exposure time of 30 seconds.



**Detection of mouse IP3R1 by immunohistochemistry.** *Sample:* FFPE section of mouse cerebellum. *Antibody:* Affinity purified rabbit anti-IP3R1 (Cat. No. A302-158A lot 1) used at a dilution of 1:200 (1 µg/ml). *Detection:* DAB. *Counterstain:* IHC Hematoxylin (blue).



**Detection of mouse IP3R1 by immunohistochemistry.** *Sample:* FFPE section of mouse cerebellum. *Antibody:* Affinity purified rabbit anti-IP3R1 (Cat. No. A302-158A lot 1) used at a dilution of 1:100 (2 µg/ml). *Detection:* Red-fluorescent goat anti-rabbit IgG-heavy and light chain cross-adsorbed Antibody DyLight® 594 Conjugated used at a dilution of 1:100. *Counterstain:* DAPI (blue).