

# BOP1 Antibody

Rabbit Polyclonal

Antigen Affinity Purified	Protein ID	NP_056016.1
Catalog No. A302-148A	GeneID	23246
Lot No. A302-148A-2		

---

<b>APPLICATIONS</b>	WB
<b>SPECIES REACTIVITY</b>	Human
<b>AMOUNT</b>	100 µl
<b>CONCENTRATION</b>	1000 µg/ml
<b>STORAGE/SHELF LIFE</b>	2 – 8°C / 1 year from date of receipt
<b>PHYSICAL STATE</b>	Liquid
<b>BUFFER</b>	Tris-buffered Saline containing 0.1% BSA and 0.09% Sodium Azide
<b>ISOTYPE</b>	IgG
<b>ORIGIN</b>	USA
<b>PRODUCTION PROCEDURES</b>	Antibody was affinity purified using an epitope specific to BOP1 immobilized on solid support.

The epitope recognized by A302-148A maps to a region between residue 300 and 350 of human block of proliferation 1 using the numbering given in entry NP\_056016.1 (GeneID 23246).

Immunoglobulin concentration was determined by extinction coefficient: absorbance at 280 nm of 1.4 equals 1.0 mg of IgG.

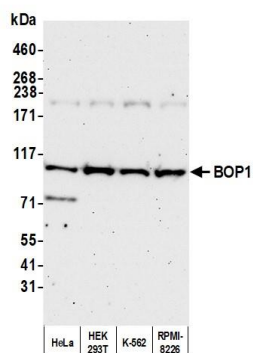
**APPLICATIONS** Centrifuge tube to remove product from lid. Optimal working dilutions should be determined experimentally by the investigator. Prepare working dilution immediately before use.

Western Blot 1:2,000 – 1:10,000

**ADDITIONAL INFO** <https://www.bethyl.com/product/A302-148A>

Use the link above to view SDS, a current list of citations, and other product specific information. IP-western blot protocol: [https://www.bethyl.com/content/protocol\\_IP\\_WB](https://www.bethyl.com/content/protocol_IP_WB)

This document certifies that this product has met all of the quality control standards defined by Bethyl Laboratories, Inc.  
Michael Spencer, PhD Date: March 18, 2022



**Detection of human BOP1 by western blot.** *Samples:* Whole cell lysate (50  $\mu$ g) from HeLa, HEK293T, K-562, and RPMI-8226 cells prepared using NETN lysis buffer. *Antibody:* Affinity purified rabbit anti-BOP1 antibody (A302-148A lot 2) used for WB at 0.1  $\mu$ g/ml. *Detection:* Chemiluminescence with an exposure time of 75 seconds.