

MADD Antibody

Rabbit Polyclonal

Antigen Affinity Purified

Protein ID NP_003673.3

Catalog No. A302-144A

GeneID 8567

Lot No. A302-144A-1



APPLICATIONS	IP, IHC, IHC-IF
SPECIES REACTIVITY	Human
PRESUMED REACTIVITY	Based on 100% sequence identity, this antibody is predicted to react with Rat
AMOUNT	100 µl
CONCENTRATION	1000 µg/ml
STORAGE/SHELF LIFE	2 – 8° C / 1 year from date of receipt
PHYSICAL STATE	Liquid
BUFFER	Tris-citrate/phosphate buffer, pH 7 to 8 containing 0.09% Sodium Azide
ISOTYPE	IgG
ORIGIN	USA
PRODUCTION PROCEDURES	Antibody was affinity purified using an epitope specific to MADD immobilized on solid support.

The epitope recognized by A302-144A maps to a region between residue 1597 and 1647 of human MAP-kinase activating death domain using the numbering given in entry NP_003673.3 (GeneID 8567).

Immunoglobulin concentration was determined by extinction coefficient: absorbance at 280 nm of 1.4 equals 1.0 mg of IgG.

APPLICATIONS Centrifuge tube to remove product from lid. Optimal working dilutions should be determined experimentally by the investigator. Prepare working dilution immediately before use.

Western Blot Not recommended. Use rabbit anti-MADD antibody A302-143A.

Immunoprecipitation 2 – 5 µg/mg lysate

Immunohistochemistry 1:1,000 – 1:5,000. Epitope retrieval with citrate buffer pH 6.0 is recommended for FFPE tissue sections.

Immunofluorescence (IHC) 1:500 – 1:2,500

APPLICATION NOTES Western blot of immunoprecipitates performed using Normal Pig Serum (Cat. No. S100-020), Goat anti-Rabbit Light Chain HRP Conjugate (Cat. No. A120-113P) and 4-8% SDS-PAGE (link to IP-western blot protocol in Additional Info section below).

IHC HUMAN CONTROLS Breast Carcinoma, Colon Carcinoma

ADDITIONAL INFO <https://www.bethyl.com/product/A302-144A>

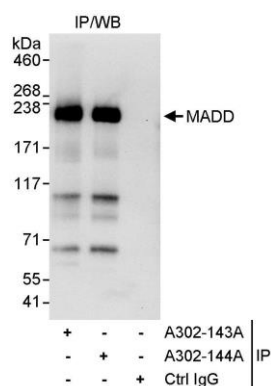
Use the link above to view SDS, a current list of citations, and other product specific information.

IP-western blot protocol: https://www.bethyl.com/content/protocol_IP_WB

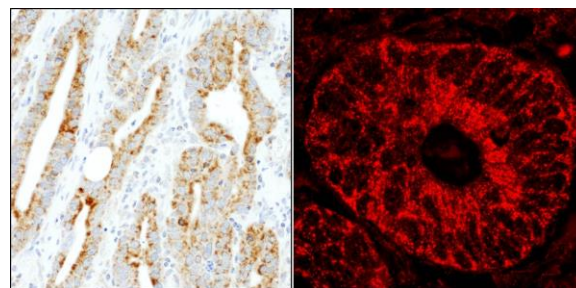
This document certifies that this product has met all of the quality control standards defined by Bethyl Laboratories, Inc.

Eric McIntush, PhD | Chief Scientific Officer

Date: June 21, 2019



Detection of human MADD by western blot of immunoprecipitates. *Samples:* Whole cell lysate (1 mg for IP, 20% of IP loaded) from HeLa cells. *Antibodies:* Affinity purified rabbit anti-MADD antibody A302-144A used for IP at 3 µg/mg lysate. MADD was also immunoprecipitated by rabbit anti-MADD antibody A302-143A, which recognizes an upstream epitope. For blotting immunoprecipitated MADD, A302-143A was used at 1 µg/ml. *Detection:* Chemiluminescence with an exposure time of 10 seconds.



Detection of human MADD by immunohistochemistry. *Sample:* FFPE sections of human breast carcinoma and colon carcinoma. *Antibody:* Affinity purified rabbit anti-MADD (Cat. No. A302-144A Lot1) used at a dilution of 1:1,000 (1 µg/ml). *Detection:* DAB and Red-fluorescent goat anti-rabbit IgG-heavy and light chain, cross-adsorbed Antibody DyLight® 594 Conjugated used at a dilution of 1:100