

CKI epsilon Antibody

Rabbit Polyclonal

Antigen Affinity Purified

Protein ID NP_001885.1

Catalog No. A302-135A

GeneID 1454

Lot No. A302-135A-1



APPLICATIONS	WB, IP
SPECIES REACTIVITY	Human
PRESUMED REACTIVITY	Based on 100% sequence identity, this antibody is predicted to react with Mouse and Chicken
AMOUNT	100 µl
CONCENTRATION	200 µg/ml
STORAGE/SHELF LIFE	2 – 8° C / 1 year from date of receipt
PHYSICAL STATE	Liquid
BUFFER	Tris-buffered Saline containing 0.1% BSA and 0.09% Sodium Azide
ISOTYPE	IgG
ORIGIN	USA
PRODUCTION PROCEDURES	Antibody was affinity purified using an epitope specific to CKI epsilon immobilized on solid support.

The epitope recognized by A302-135A maps to a region between residue 366 and 416 of human casein kinase 1, epsilon using the numbering given in entry NP_001885.1 (GeneID 1454). This antibody may have slight crossreactivity with CKI delta, which has a similar epitope.

Immunoglobulin concentration was determined by extinction coefficient: absorbance at 280 nm of 1.4 equals 1.0 mg of IgG.

APPLICATIONS Centrifuge tube to remove product from lid. Optimal working dilutions should be determined experimentally by the investigator. Prepare working dilution immediately before use.

Western Blot 1:2,000 – 1:10,000

Immunoprecipitation 2 – 5 µg/mg lysate

APPLICATION NOTES Western blot of immunoprecipitates performed using Normal Pig Serum (Cat. No. S100-020), Goat anti-Rabbit Light Chain HRP Conjugate (Cat. No. A120-113P) and 4-20% SDS-PAGE (link to IP-western blot protocol in Additional Info section below).

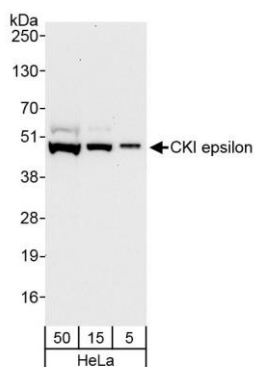
Western blot of lysates performed using standard western blot reagents and 4-20% SDS-PAGE.

ADDITIONAL INFO <https://www.bethyl.com/product/A302-135A>

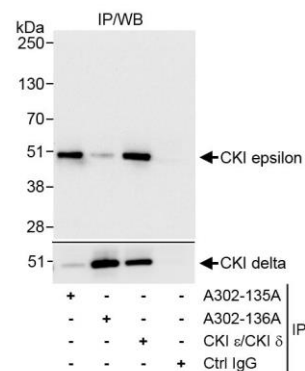
Use the link above to view SDS, a current list of citations, and other product specific information.

IP-western blot protocol https://www.bethyl.com/content/protocol_IP_WB

This document certifies that this product has met all of the quality control standards defined by Bethyl Laboratories, Inc.
Eric McIntush, PhD | Chief Scientific Officer Date: November 12, 2019



Detection of human CKI epsilon by western blot. *Samples:* Whole cell lysate (5, 15, and 50 µg) from HeLa cells. *Antibody:* Affinity purified rabbit anti-CKI epsilon antibody A302-135A (lot A302-135A-1) used at 0.04 µg/ml. *Detection:* Chemiluminescence with an exposure time of 30 seconds.



Detection of human CKI epsilon by western blot of immunoprecipitates. *Samples:* Whole cell lysate (1 mg for IP, 20% of IP loaded) from HeLa cells. *Antibodies:* Affinity purified rabbit anti-CKI epsilon antibody A302-135A (lot A302-0135A-1) used for IP at 10 µg/mg lysate. CKI epsilon was also immunoprecipitated by a rabbit antibody (BL7891) directed to an epitope that is common to CKI epsilon and CKI delta. CKI delta was immunoprecipitated and blotted using A302-136A. For blotting immunoprecipitated CKI epsilon, A302-135A was used at 1.0 µg/ml. *Detection:* Chemiluminescence with exposure time of 3 seconds.