

GIT1 Antibody

Rabbit Polyclonal

Antigen Affinity Purified

Protein ID NP_054749.2

Catalog No. A302-101A

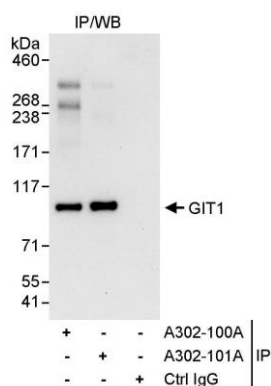
GeneID 28964

Lot No. A302-101A-1

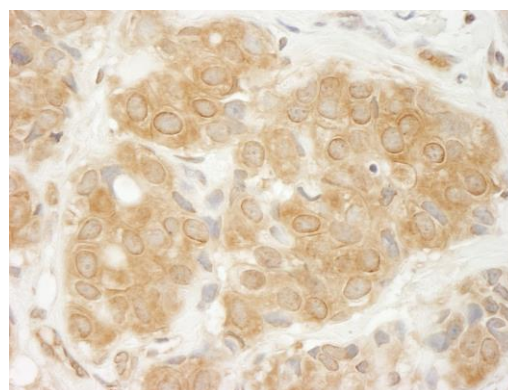


| | |
|------------------------------|--|
| APPLICATIONS | IP, IHC |
| SPECIES REACTIVITY | Human |
| AMOUNT | 100 µl |
| CONCENTRATION | 1000 µg/ml |
| STORAGE/SHELF LIFE | 2 – 8° C / 1 year from date of receipt |
| PHYSICAL STATE | Liquid |
| BUFFER | Tris-citrate/phosphate buffer, pH 7 to 8 containing 0.09% Sodium Azide |
| ISOTYPE | IgG |
| ORIGIN | USA |
| PRODUCTION PROCEDURES | <p>Antibody was affinity purified using an epitope specific to GIT1 immobilized on solid support.</p> <p>The epitope recognized by A302-101A maps to a region between residue 600 to 650 of human G protein-coupled receptor kinase interacting ArfGAP 1 using the numbering given in entry NP_054749.2 (GeneID 28964).</p> <p>Immunoglobulin concentration was determined by extinction coefficient: absorbance at 280 nm of 1.4 equals 1.0 mg of IgG.</p> |
| APPLICATIONS | <p>Centrifuge tube to remove product from lid. Optimal working dilutions should be determined experimentally by the investigator. Prepare working dilution immediately before use.</p> <p>Western Blot Not recommended. Use rabbit anti-GIT1 antibody A302-100A.</p> <p>Immunoprecipitation 2 – 5 µg/mg lysate</p> <p>Immunohistochemistry 1:500 – 1:2,000. Epitope retrieval with citrate buffer pH 6.0 is recommended for FFPE tissue sections.</p> |
| APPLICATION NOTES | Western blot of immunoprecipitates performed using Normal Pig Serum (Cat. No. S100-020), Goat anti-Rabbit Light Chain HRP Conjugate (Cat. No. A120-113P) and 4-8% SDS-PAGE (link to IP-western blot protocol in Additional Info section below). |
| IHC HUMAN CONTROLS | Breast Carcinoma, Non-Small Cell Lung Cancer, Osteosarcoma, Testicular Seminoma |
| ADDITIONAL INFO | <p>https://www.bethyl.com/product/A302-101A</p> <p>Use the link above to view SDS, a current list of citations, and other product specific information.</p> <p>IP-western blot protocol: https://www.bethyl.com/content/protocol_IP_WB</p> |

This document certifies that this product has met all of the quality control standards defined by Bethyl Laboratories, Inc.
Eric McIntush, PhD | Chief Scientific Officer Date: June 21, 2019



Detection of human GIT1 by western blot of immunoprecipitates. *Samples:* Whole cell lysate (1 mg for IP, 20% of IP loaded) from HeLa cells. *Antibodies:* Affinity purified rabbit anti-GIT1 antibody A302-101A used for IP at 3 $\mu\text{g}/\text{mg}$ lysate. GIT1 was also immunoprecipitated by rabbit anti-GIT1 antibody A302-100A, which recognizes an upstream epitope. For blotting immunoprecipitated GIT1, A302-100A was used at 1 $\mu\text{g}/\text{ml}$. *Detection:* Chemiluminescence with an exposure time of 30 seconds.



Detection of human GIT1 by immunohistochemistry. *Sample:* FFPE section of human breast carcinoma. *Antibody:* Affinity purified rabbit anti-GIT1 (Cat. No. A302-101A Lot1) used at a dilution of 1:1,000 (1 $\mu\text{g}/\text{ml}$). *Detection:* DAB