

LARP1 Antibody

Rabbit Polyclonal

Antigen Affinity Purified

Protein ID NP_291029.2

Catalog No. A302-087A

GeneID 23367

Lot No. A302-087A-4

APPLICATIONS WB, IP, IHC

SPECIES REACTIVITY Human

AMOUNT 100 µl

CONCENTRATION 200 µg/ml

STORAGE/SHELF LIFE 2 – 8°C / 1 year from date of receipt

PHYSICAL STATE Liquid

BUFFER Tris-buffered Saline containing 0.1% BSA and 0.09% Sodium Azide

ISOTYPE IgG

ORIGIN USA

PRODUCTION PROCEDURES Antibody was affinity purified using an epitope specific to LARP1 immobilized on solid support.

The epitope recognized by A302-087A maps to a region between residue 275 and 325 of human La ribonucleoprotein domain family, member 1 using the numbering given in entry NP_291029.2 (GeneID 23367).

Immunoglobulin concentration was determined by extinction coefficient: absorbance at 280 nm of 1.4 equals 1.0 mg of IgG.

APPLICATIONS Centrifuge tube to remove product from lid. Optimal working dilutions should be determined experimentally by the investigator. Prepare working dilution immediately before use.

Western Blot 1:2,000 – 1:10,000

Immunoprecipitation 2 – 10 µg/mg lysate

Immunohistochemistry 1:100 to 1:500. Epitope retrieval with citrate buffer pH6.0 is recommended for FFPE tissue sections.

IHC HUMAN CONTROLS Colon Carcinoma, Ovarian Carcinoma

ADDITIONAL INFO <https://www.bethyl.com/product/A302-087A>

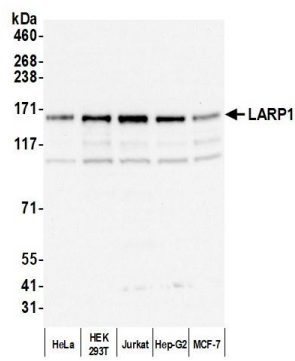
Use the link above to view SDS, a current list of citations, and other product specific information.

IP-western blot protocol: https://www.bethyl.com/content/protocol_IP_WB

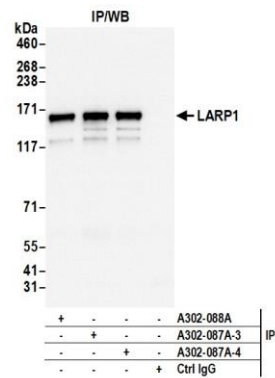
This document certifies that this product has met all of the quality control standards defined by Bethyl Laboratories, Inc.

Michael Spencer, PhD

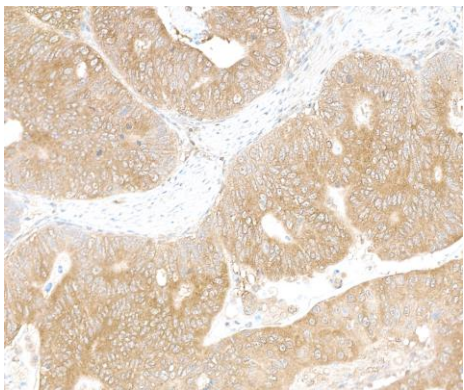
Date: April 28, 2022



Detection of human LARP1 by western blot. *Samples:* Whole cell lysate (10 µg) from HeLa, HEK293T, Jurkat, Hep-G2, and MCF-7 cells prepared using NETN lysis buffer. *Antibody:* Affinity purified rabbit anti-LARP1 antibody (A302-087A lot 4) used for WB at 0.04 µg/ml. *Detection:* Chemiluminescence with an exposure time of 3 seconds.



Detection of human LARP1 by western blot of immunoprecipitates. *Samples:* Whole cell lysate (1.0 mg per IP reaction; 20% of IP loaded) from HEK293T cells prepared using NETN lysis buffer. *Antibodies:* Affinity purified rabbit anti-LARP1 antibody (A302-087A lot 4) used for IP at 6 µg per reaction. LARP1 was also immunoprecipitated by a previous lot of this antibody (A302-087A lot 3) and a second antibody against a different epitope of LARP1. For blotting immunoprecipitated LARP1, A302-087A was used at 0.04 µg/ml. *Detection:* Chemiluminescence with an exposure time of 1 second.



Detection of human LARP1 by immunohistochemistry. *Sample:* FFPE section of human colon carcinoma. *Antibody:* Affinity purified rabbit anti-LARP1 (A302-087A Lot 4) used at a dilution of 1:200 (1 µg/ml). *Detection:* DAB