

LAP1B Antibody

Rabbit Polyclonal

Antigen Affinity Purified

Protein ID NP_056417.2

Catalog No. A302-082A

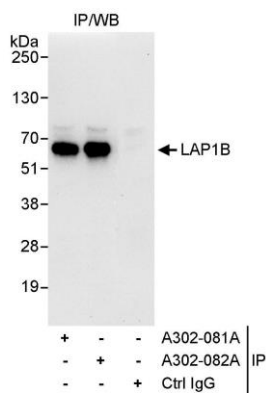
GeneID 26092

Lot No. A302-082A-1

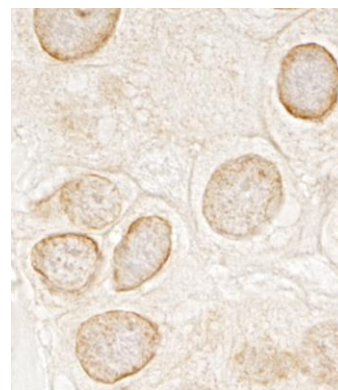


APPLICATIONS	IP, IHC
SPECIES REACTIVITY	Human
AMOUNT	100 µl
CONCENTRATION	1000 µg/ml
STORAGE/SHELF LIFE	2 – 8° C / 1 year from date of receipt
PHYSICAL STATE	Liquid
BUFFER	Tris-citrate/phosphate buffer, pH 7 to 8 containing 0.09% Sodium Azide
ISOTYPE	IgG
ORIGIN	USA
PRODUCTION PROCEDURES	Antibody was affinity purified using an epitope specific to LAP1B immobilized on solid support. The epitope recognized by A302-082A maps to a region between residue 275 and 325 of human lamina associated polypeptide 1B using the numbering given in entry NP_056417.2 (GeneID 26092). Immunoglobulin concentration was determined by extinction coefficient: absorbance at 280 nm of 1.4 equals 1.0 mg of IgG.
APPLICATIONS	Centrifuge tube to remove product from lid. Optimal working dilutions should be determined experimentally by the investigator. Prepare working dilution immediately before use. Western Blot Not recommended. Use rabbit anti-LAP1B antibody A302-081A. Immunoprecipitation 2 – 5 µg/mg lysate Immunohistochemistry 1:500 – 1:2,000. Epitope retrieval with citrate buffer pH 6.0 is recommended for FFPE tissue sections.
APPLICATION NOTES	Western blot of immunoprecipitates performed using Normal Pig Serum (Cat. No. S100-020), Goat anti-Rabbit Light Chain HRP Conjugate (Cat. No. A120-113P) and 4-20% SDS-PAGE (link to IP-western blot protocol in Additional Info section below).
IHC HUMAN CONTROLS	Breast Carcinoma, Colon Carcinoma
ADDITIONAL INFO	https://www.bethyl.com/product/A302-082A Use the link above to view SDS, a current list of citations, and other product specific information. IP-western blot protocol: https://www.bethyl.com/content/protocol_IP_WB

This document certifies that this product has met all of the quality control standards defined by Bethyl Laboratories, Inc.
Eric McIntush, PhD | Chief Scientific Officer Date: June 21, 2019



Detection of human LAP1B by western blot of immunoprecipitates. *Samples:* Whole cell lysate (1 mg for IP, 20% of IP loaded) from HeLa cells. *Antibodies:* Affinity purified rabbit anti-LAP1B antibody A302-082A used for IP at 3 μ g/mg lysate. LAP1B was also immunoprecipitated by rabbit anti-LAP1B antibody A302-081A, which recognizes an upstream epitope. For blotting immunoprecipitated LAP1B, A302-081A was used at 1 μ g/ml. *Detection:* Chemiluminescence with an exposure time of 10 seconds.



Detection of human LAP1B by immunohistochemistry. *Sample:* FFPE section of human breast carcinoma. *Antibody:* Affinity purified rabbit anti-LAP1B (Cat. No. A302-082A Lot1) used at a dilution of 1:200 (1 μ g/ml). *Detection:* DAB