

hPrp3p Antibody

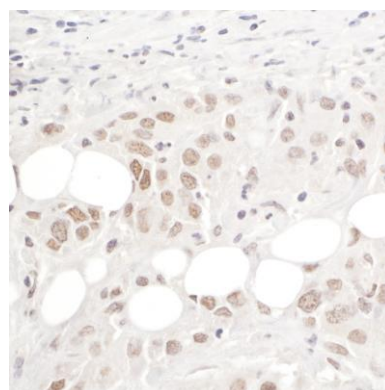
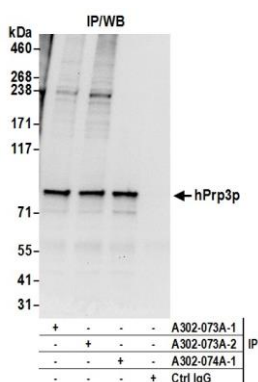
Rabbit Polyclonal

Antigen Affinity Purified Protein ID NP_004689.1
Catalog No. A302-073A GeneID 9129
Lot No. A302-073A-2



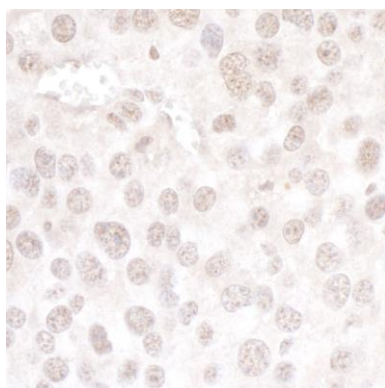
APPLICATIONS	IP, IHC
SPECIES REACTIVITY	Human, Mouse
PRESUMED REACTIVITY	Based on 100% sequence identity, this antibody is predicted to react with Chicken, Bovine and Orangutan
AMOUNT	100 µl
CONCENTRATION	1000 µg/ml
STORAGE/SHELF LIFE	2 – 8° C / 1 year from date of receipt
PHYSICAL STATE	Liquid
BUFFER	Tris-citrate/phosphate buffer, pH 7 to 8 containing 0.09% Sodium Azide
ISOTYPE	IgG
ORIGIN	USA
PRODUCTION PROCEDURES	<p>Antibody was affinity purified using an epitope specific to hPrp3p immobilized on solid support.</p> <p>The epitope recognized by A302-073A maps to a region between residue 100 and 150 of human U4/U6 small nuclear ribonucleoprotein Prp3 using the numbering given in entry NP_004689.1 (GeneID 9129).</p> <p>Immunoglobulin concentration was determined by extinction coefficient: absorbance at 280 nm of 1.4 equals 1.0 mg of IgG.</p>
APPLICATIONS	<p>Centrifuge tube to remove product from lid. Optimal working dilutions should be determined experimentally by the investigator. Prepare working dilution immediately before use.</p> <p>Western Blot Not recommended. A302-073A has not performed satisfactorily when used for WB of hPrp3p in crude preparations (e.g. whole cell lysate). This antibody can be used for WB of enriched (e.g. immunoprecipitated) sources of hPrp3p.</p> <p>Immunoprecipitation 2 – 10 µg/mg lysate</p> <p>Immunohistochemistry 1:1,000 – 1:5,000. Epitope retrieval with citrate buffer pH 6.0 is recommended for FFPE tissue sections.</p>
APPLICATION NOTES	Western blot of immunoprecipitates performed using Normal Pig Serum (Cat. No. S100-020), Goat anti-Rabbit Light Chain HRP Conjugate (Cat. No. A120-113P) and 4-8% SDS-PAGE (link to IP-western blot protocol in Additional Info section below).
IHC HUMAN CONTROLS	Breast Carcinoma, Colon Carcinoma, Ovarian Carcinoma, Prostate Carcinoma
IHC MOUSE CONTROLS	Colon Carcinoma CT26, Hybridoma Tumor, Renal Cell Carcinoma, Teratoma
ADDITIONAL INFO	<p>https://www.bethyl.com/product/A302-073A</p> <p>Use the link above to view SDS, a current list of citations, and other product specific information.</p> <p>IP-western blot protocol: https://www.bethyl.com/content/protocol_IP_WB</p>

This document certifies that this product has met all of the quality control standards defined by Bethyl Laboratories, Inc.
Eric McIntush, PhD | Chief Scientific Officer Date: June 21, 2019



Detection of human hPrp3p by western blot of immunoprecipitates. *Samples:* Whole cell lysate (0.5 or 1.0 mg per IP reaction; 20% of IP loaded) from HeLa cells prepared using NETN lysis buffer. *Antibodies:* Affinity purified rabbit anti-hPrp3p antibody A302-073A (lot A302-073A-2) used for IP at 6 μ g per reaction. hPrp3p was also immunoprecipitated by a previous lot of this antibody (lot A302-073A-1) and rabbit anti-hPrp3p antibody A302-074A-1. For blotting immunoprecipitated hPrp3p, A302-074A was used at 1 μ g/ml. *Detection:* Chemiluminescence with an exposure time of 10 seconds.

Detection of human hPrp3p by immunohistochemistry. *Sample:* FFPE section of human breast carcinoma. *Antibody:* Affinity purified rabbit anti-hPrp3p (Cat. No. A302-073A Lot2) used at a dilution of 1:5,000 (0.2 μ g/ml). *Detection:* DAB



Detection of mouse hPrp3p by immunohistochemistry. *Sample:* FFPE section of mouse renal cell carcinoma. *Antibody:* Affinity purified rabbit anti-hPrp3p (Cat. No. A302-073A Lot2) used at a dilution of 1:5,000 (0.2 μ g/ml). *Detection:* DAB