

# QSER1 Antibody

Rabbit Polyclonal

Antigen Affinity Purified

Protein ID NP\_001070254.1

Catalog No. A302-072A

GeneID 79832

Lot No. A302-072A-1



|                              |   |
|------------------------------|---|
| <b>APPLICATIONS</b>          | IP, IHC   |
| <b>SPECIES REACTIVITY</b>    | Human   |
| <b>AMOUNT</b>                | 100 µl  |
| <b>CONCENTRATION</b>         | 1000 µg/ml  |
| <b>STORAGE/SHELF LIFE</b>    | 2 – 8° C / 1 year from date of receipt  |
| <b>PHYSICAL STATE</b>        | Liquid  |
| <b>BUFFER</b>                | Tris-citrate/phosphate buffer, pH 7 to 8 containing 0.09% Sodium Azide                          |
| <b>ISOTYPE</b>               | IgG   |
| <b>ORIGIN</b>                | USA   |
| <b>PRODUCTION PROCEDURES</b> | Antibody was affinity purified using an epitope specific to QSER1 immobilized on solid support. |

The epitope recognized by A302-072A maps to a region between residue 1407 to 1457 of human glutamine and serine rich 1 using the numbering given in entry NP\_001070254.1 (GeneID 79832).

Immunoglobulin concentration was determined by extinction coefficient: absorbance at 280 nm of 1.4 equals 1.0 mg of IgG.

**APPLICATIONS** Centrifuge tube to remove product from lid. Optimal working dilutions should be determined experimentally by the investigator. Prepare working dilution immediately before use.

Western Blot Not recommended. Use rabbit anti-QSER1 antibody A302-071A.

Immunoprecipitation 2 – 5 µg/mg lysate

Immunohistochemistry 1:500 – 1:2,000. Epitope retrieval with citrate buffer pH 6.0 is recommended for FFPE tissue sections.

**APPLICATION NOTES** Western blot of immunoprecipitates performed using Normal Pig Serum (Cat. No. S100-020), Goat anti-Rabbit Light Chain HRP Conjugate (Cat. No. A120-113P) and 4-8% SDS-PAGE (link to IP-western blot protocol in Additional Info section below).

**IHC HUMAN CONTROLS** Breast Carcinoma, Ovarian Carcinoma, Prostate Carcinoma

**ADDITIONAL INFO** <https://www.bethyl.com/product/A302-072A>

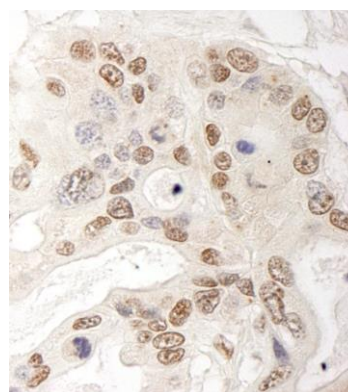
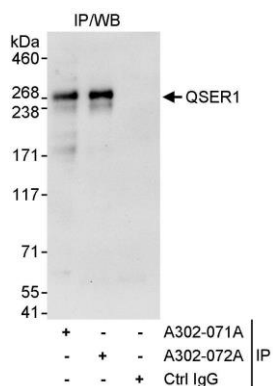
Use the link above to view SDS, a current list of citations, and other product specific information.

IP-western blot protocol: [https://www.bethyl.com/content/protocol\\_IP\\_WB](https://www.bethyl.com/content/protocol_IP_WB)

This document certifies that this product has met all of the quality control standards defined by Bethyl Laboratories, Inc.

Eric McIntush, PhD | Chief Scientific Officer

Date: June 21, 2019



**Detection of human QSER1 by western blot of immunoprecipitates.** *Samples:* Whole cell lysate (1 mg for IP, 20% of IP loaded) from HeLa cells. *Antibodies:* Affinity purified rabbit anti-QSER1 antibody A302-072A used for IP at 3 µg/mg lysate. QSER1 was also immunoprecipitated by rabbit anti-QSER1 antibody A302-071A, which recognizes an upstream epitope. For blotting immunoprecipitated QSER1, A302-071A was used at 1 µg/ml. *Detection:* Chemiluminescence with an exposure time of 30 seconds.

**Detection of human QSER1 by immunohistochemistry.** *Sample:* FFPE section of human ovarian carcinoma. *Antibody:* Affinity purified rabbit anti-QSER1 (Cat. No. A302-072A Lot1) used at a dilution of 1:200 (1 µg/ml). *Detection:* DAB