

ERK1 Antibody

Rabbit Polyclonal

Antigen Affinity Purified

Protein ID NP_002737.2

Catalog No. A302-060A

GeneID 5595

Lot No. A302-060A-1



APPLICATIONS WB, IP, IHC

SPECIES REACTIVITY Human

AMOUNT 100 µl

CONCENTRATION 200 µg/ml

STORAGE/SHELF LIFE 2 – 8° C / 1 year from date of receipt

PHYSICAL STATE Liquid

BUFFER Tris-buffered Saline containing 0.1% BSA and 0.09% Sodium Azide

ISOTYPE IgG

ORIGIN USA

PRODUCTION PROCEDURES Antibody was affinity purified using an epitope specific to ERK1 immobilized on solid support.

The epitope recognized by A302-060A maps to a region between residue 329 and 379 of human extracellular signal-related kinase 1 (mitogen-activated protein kinase 3) using the numbering given in entry NP_002737.2 (GeneID 5595).

Immunoglobulin concentration was determined by extinction coefficient: absorbance at 280 nm of 1.4 equals 1.0 mg of IgG.

APPLICATIONS Centrifuge tube to remove product from lid. Optimal working dilutions should be determined experimentally by the investigator. Prepare working dilution immediately before use.

Western Blot 1:2,000 – 1:10,000

Immunoprecipitation 2 – 5 µg/mg lysate

Immunohistochemistry 1:100 – 1:500. Epitope retrieval with citrate buffer pH 6.0 is recommended for FFPE tissue sections.

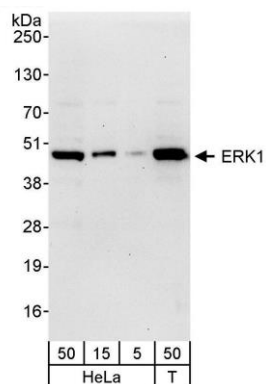
APPLICATION NOTES Western blot of immunoprecipitates performed using Normal Pig Serum (Cat. No. S100-020), Goat anti-Rabbit Light Chain HRP Conjugate (Cat. No. A120-113P) and 4-20% SDS-PAGE (link to IP-western blot protocol in Additional Info section below).

IHC HUMAN CONTROLS Western blot of lysates performed using standard western blot reagents and 4-20% SDS-PAGE. Breast Carcinoma, Colon Carcinoma, Testis

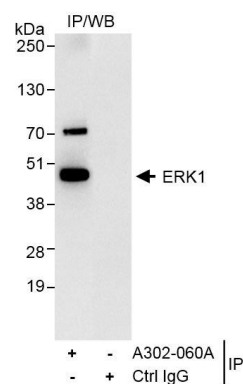
ADDITIONAL INFO <https://www.bethyl.com/product/A302-060A>

Use the link above to view SDS, a current list of citations, and other product specific information. IP-western blot protocol https://www.bethyl.com/content/protocol_IP_WB

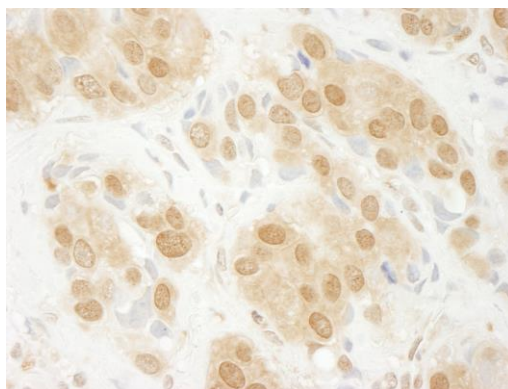
This document certifies that this product has met all of the quality control standards defined by Bethyl Laboratories, Inc.
Eric McIntush, PhD | Chief Scientific Officer Date: October 22, 2019



Detection of human ERK1 by western blot. *Samples:* Whole cell lysate from HeLa (5, 15 and 50 μ g) and HEK293T (T; 50 μ g) cells. *Antibodies:* Affinity purified rabbit anti-ERK1 antibody A302-060A used for WB at 0.04 μ g/ml. *Detection:* Chemiluminescence with exposure time of 30 seconds.



Detection of human ERK1 by western blot of immunoprecipitates. *Samples:* Whole cell lysate (1 mg for IP, 20% of IP loaded) from HeLa cells. *Antibodies:* Affinity purified rabbit anti-ERK1 antibody A302-060A used for IP at 3 μ g/mg lysate. For blotting immunoprecipitated ERK1, A302-060A was used at 1.0 μ g/ml. *Detection:* Chemiluminescence with exposure time of 3 seconds.



Detection of human ERK1 by immunohistochemistry. *Sample:* FFPE section of human breast carcinoma. *Antibody:* Affinity purified rabbit anti-ERK1 (Cat. No. A302-060A lot 1) used at a dilution of 1:200 (1 μ g/ml). *Detection:* DAB