

BCR Antibody

Rabbit Polyclonal

Antigen Affinity Purified

Protein ID NP_004318.3

Catalog No. A302-057A

GeneID 613

Lot No. A302-057A-1



APPLICATIONS	WB, IP, ICC-IF, F
SPECIES REACTIVITY	Human
PRESUMED REACTIVITY	Based on 100% sequence identity, this antibody is predicted to react with Mouse
AMOUNT	100 µl
CONCENTRATION	1000 µg/ml
STORAGE/SHELF LIFE	2 - 8° C / 1 year from date of receipt
PHYSICAL STATE	Liquid
BUFFER	Tris-citrate/phosphate buffer, pH 7 to 8 containing 0.09% Sodium Azide
ISOTYPE	IgG
ORIGIN	USA
PRODUCTION PROCEDURES	Antibody was affinity purified using an epitope specific to BCR immobilized on solid support. The epitope recognized by A302-057A maps to a region between residue 1221 and 1271 of human breakpoint cluster region using the numbering given in entry NP_004318.3 (GeneID 613). Immunoglobulin concentration was determined by extinction coefficient: absorbance at 280 nm of 1.4 equals 1.0 mg of IgG.

APPLICATIONS Centrifuge tube to remove product from lid. Optimal working dilutions should be determined experimentally by the investigator. Prepare working dilution immediately before use.

Western Blot	1:2,000 - 1:10,000
Immunoprecipitation	10 µg/mg lysate
Immunofluorescence (ICC)	1:500 - 1:2,000
Flow Cytometry	0.5 µg per 1 X 10 ⁶ cells in a 150 µl volume

APPLICATION NOTES Western blot of immunoprecipitates performed using Normal Pig Serum (Cat. No. S100-020), Goat anti-Rabbit Light Chain HRP Conjugate (Cat. No. A120-113P) and 4-8% SDS-PAGE (link to IP-western blot protocol in Additional Info section below).

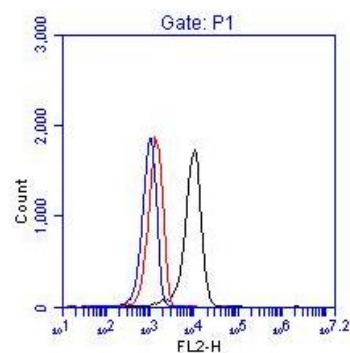
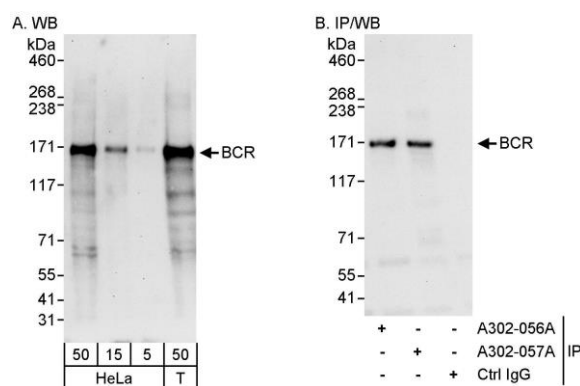
Western blot of lysates performed using standard western blot reagents and 4-8% SDS-PAGE.

IHC HUMAN CONTROLS K-562 Cells

ADDITIONAL INFO <https://www.bethyl.com/product/A302-057A>

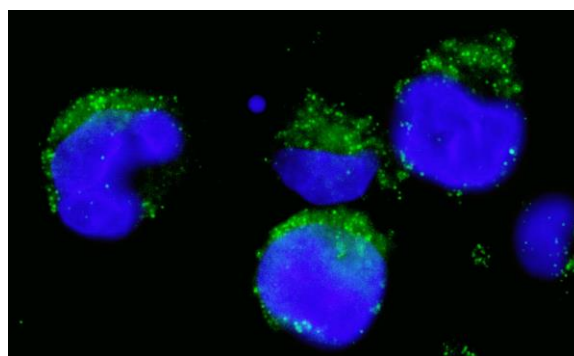
Use the link above to view SDS, a current list of citations, and other product specific information. IP-western blot protocol: https://www.bethyl.com/content/protocol_IP_WB

This document certifies that this product has met all of the quality control standards defined by Bethyl Laboratories, Inc.
Eric McIntush, PhD | Chief Scientific Officer Date: June 21, 2019



Detection of human BCR by western blot and immunoprecipitation. *Samples:* Whole cell lysate from HeLa (5, 15 and 50 µg for WB; 1 mg for IP, 20% of IP loaded) and HEK293T (T; 50 µg) cells. *Antibodies:* Affinity purified rabbit anti-BCR antibody A302-057A used for WB at 0.1 µg/ml (A) and 1 µg/ml (B) and used for IP at 10 µg/mg lysate. BCR was also immunoprecipitated by rabbit anti-BCR antibody A302-056A, which recognizes an upstream epitope. *Detection:* Chemiluminescence with exposure times of 30 seconds (A) and 10 seconds (B).

Detection of BCR. 1×10^6 K-562 cells were fixed, permeabilized, and stained with 0.25 µg anti-BCR A302-057A in a 150 µl reaction. Isotype anti-KLH control (red), no antibody (blue) and anti-BCR A302-057A (black).



Detection of human BCR by immunocytochemistry.

Sample: FFPE section of human K-562 cells (contains the chromosomal translocation, t(9:22) that creates the BCR/ABL fusion gene). *Antibody:* Affinity purified rabbit anti-BCR (Cat. No. A302-057A) used at a dilution of 1:1,000 (1 µg/ml). *Detection:* Green-fluorescent goat anti-rabbit IgG - Alexa Fluor® 488 used at a dilution of 1:1,000.