

# ASF Antibody

Rabbit Polyclonal

Antigen Affinity Purified

Protein ID NP\_008855.1

Catalog No. A302-052A

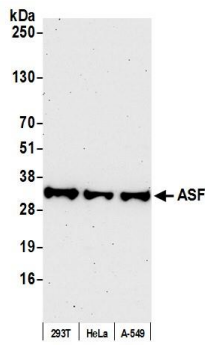
GeneID 6426

Lot No. A302-052A-2

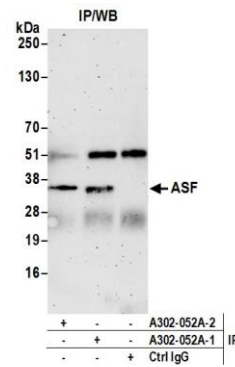


<b>APPLICATIONS</b>	WB, IP
<b>SPECIES REACTIVITY</b>	Human
<b>PRESUMED REACTIVITY</b>	Based on 100% sequence identity, this antibody is predicted to react with Mouse, X. tropicalis, Chicken, Bovine, Pig and Orangutan
<b>AMOUNT</b>	100 µl
<b>CONCENTRATION</b>	1000 µg/ml
<b>STORAGE/SHELF LIFE</b>	2 – 8° C / 1 year from date of receipt
<b>PHYSICAL STATE</b>	Liquid
<b>BUFFER</b>	Tris-citrate/phosphate buffer, pH 7 to 8 containing 0.09% Sodium Azide
<b>ISOTYPE</b>	IgG
<b>ORIGIN</b>	USA
<b>PRODUCTION PROCEDURES</b>	<p>Antibody was affinity purified using an epitope specific to ASF immobilized on solid support.</p> <p>The epitope recognized by A302-052A maps to a region between residue 1 and 50 of human alternative splicing factor (splicing factor, arginine/serine-rich 1) using the numbering given in entry NP_008855.1 (GeneID 6426).</p> <p>Immunoglobulin concentration was determined by extinction coefficient: absorbance at 280 nm of 1.4 equals 1.0 mg of IgG.</p>
<b>APPLICATIONS</b>	<p>Centrifuge tube to remove product from lid. Optimal working dilutions should be determined experimentally by the investigator. Prepare working dilution immediately before use.</p> <p>Western Blot                      1:2,000 – 1:10,000</p> <p>Immunoprecipitation        2 – 10 µg/mg lysate</p>
<b>ADDITIONAL INFO</b>	<p><a href="https://www.bethyl.com/product/A302-052A">https://www.bethyl.com/product/A302-052A</a></p> <p>Use the link above to view SDS, a current list of citations, and other product specific information. IP-western blot protocol: <a href="https://www.bethyl.com/content/protocol_IP_WB">https://www.bethyl.com/content/protocol_IP_WB</a></p>

This document certifies that this product has met all of the quality control standards defined by Bethyl Laboratories, Inc.  
Eric McIntush, PhD | Chief Scientific Officer Date: July 28, 2020



**Detection of human ASF by western blot.** *Samples:* Whole cell lysate (50  $\mu$ g) from HEK293T, HeLa, and A-549 cells prepared using NETN lysis buffer. *Antibody:* Affinity purified rabbit anti-ASF antibody A302-052A (lot A302-052A-2) used for WB at 0.1  $\mu$ g/ml. *Detection:* Chemiluminescence with an exposure time of 3 minutes.



**Detection of human ASF by western blot of immunoprecipitates.** *Samples:* Whole cell lysate (1.0 mg per IP reaction; 20% of IP loaded) from HeLa cells prepared using NETN lysis buffer. *Antibodies:* Affinity purified rabbit anti-ASF antibody A302-052A (lot A302-052A-2) used for IP at 6  $\mu$ g per reaction. ASF was also immunoprecipitated by a previous lot of this antibody (lot A302-052A-1). For blotting immunoprecipitated ASF, A302-052A was used at 0.1  $\mu$ g/ml. *Detection:* Chemiluminescence with an exposure time of 3 minutes.