

GSK3-beta Antibody

Rabbit Polyclonal

Antigen Affinity Purified

Protein ID AAA66475.1

Catalog No. A302-048A

GeneID 2932

Lot No. A302-048A-1



APPLICATIONS	WB
SPECIES REACTIVITY	Human, Mouse
PRESUMED REACTIVITY	Based on 100% sequence identity, this antibody is predicted to react with Rat
AMOUNT	100 µl
CONCENTRATION	1000 µg/ml
STORAGE/SHELF LIFE	2 - 8° C / 1 year from date of receipt
PHYSICAL STATE	Liquid
BUFFER	Tris-citrate/phosphate buffer, pH 7 to 8 containing 0.09% Sodium Azide
ISOTYPE	IgG
ORIGIN	USA
PRODUCTION PROCEDURES	Antibody was affinity purified using an epitope specific to GSK3-beta immobilized on solid support.

The epitope recognized by A302-048A maps to a region between residue 370 and 420 of human glycogen synthase kinase-3 beta using the numbering given in entry AAA66475.1 (GeneID 2932).

Immunoglobulin concentration was determined by extinction coefficient: absorbance at 280 nm of 1.4 equals 1.0 mg of IgG.

APPLICATIONS Centrifuge tube to remove product from lid. Optimal working dilutions should be determined experimentally by the investigator. Prepare working dilution immediately before use.

Western Blot 1:1,000 – 1:5,000

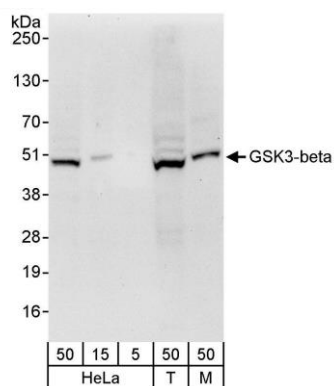
Immunoprecipitation Not recommended. Use rabbit anti-GSK3-beta antibody A302-049A.

APPLICATION NOTES Western blot of lysates performed using standard western blot reagents and 4-20% SDS-PAGE.

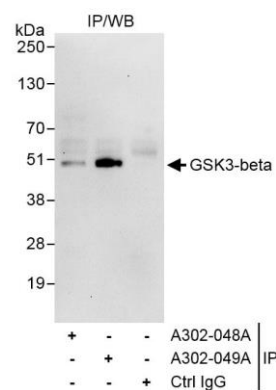
ADDITIONAL INFO <https://www.bethyl.com/product/A302-048A>

Use the link above to view SDS, a current list of citations, and other product specific information.

This document certifies that this product has met all of the quality control standards defined by Bethyl Laboratories, Inc.
Eric McIntush, PhD | Chief Scientific Officer Date: November 12, 2019



Detection of human and mouse GSK3-beta by western blot. *Samples:* Whole cell lysate from HeLa (5, 15, and 50 μ g), HEK293T (T; 50 μ g) and mouse NIH 3T3 (M; 50 μ g) cells. *Antibody:* Affinity purified rabbit anti-GSK3-beta antibody A302-048A (lot A302-048A-1) used at 0.04 μ g/ml. *Detection:* Chemiluminescence with an exposure time of 30 seconds.



Detection of human GSK3-beta by western blot of immunoprecipitates. *Samples:* Whole cell lysate (1 mg for IP, 20% of IP loaded) from HeLa cells. *Antibodies:* Affinity purified rabbit anti-GSK3-beta antibody A302-048A (lot A302-048A-1) used for IP at 10 μ g/mg lysate. GSK3-beta was also immunoprecipitated by rabbit anti-GSK3-beta antibody A302-049A, which recognizes an upstream epitope. For blotting immunoprecipitated GSK3-beta, A302-048A was used at 1.0 μ g/ml. *Detection:* Chemiluminescence with exposure time of 30 seconds.