

# Myosin-10 Antibody

Rabbit Polyclonal

Antigen Affinity Purified

Protein ID NP\_005955.1

Catalog No. A302-043A

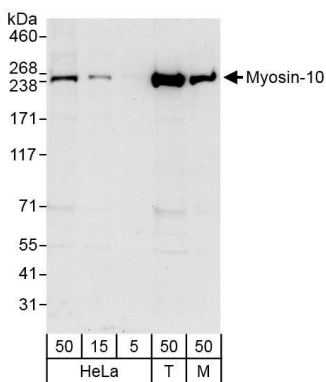
GeneID 4628

Lot No. A302-043A-1

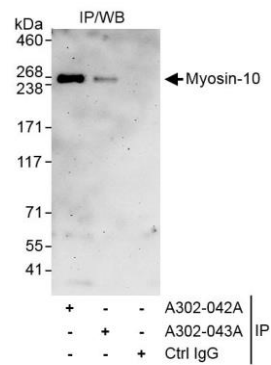


APPLICATIONS	WB
SPECIES REACTIVITY	Human, Mouse
PRESUMED REACTIVITY	Based on 100% sequence identity, this antibody is predicted to react with Rat and Rabbit
AMOUNT	100 µl
CONCENTRATION	1000 µg/ml
STORAGE/SHELF LIFE	2 – 8° C / 1 year from date of receipt
PHYSICAL STATE	Liquid
BUFFER	Tris-citrate/phosphate buffer, pH 7 to 8 containing 0.09% Sodium Azide
ISOTYPE	IgG
ORIGIN	USA
PRODUCTION PROCEDURES	<p>Antibody was affinity purified using an epitope specific to Myosin-10 immobilized on solid support.</p> <p>The epitope recognized by A302-043A maps to a region between residue 1955 and 1976 of human myosin, heavy chain 10, non-muscle using the numbering given in entry NP_005955.1 (GeneID 4628).</p> <p>Immunoglobulin concentration was determined by extinction coefficient: absorbance at 280 nm of 1.4 equals 1.0 mg of IgG.</p>
APPLICATIONS	<p>Centrifuge tube to remove product from lid. Optimal working dilutions should be determined experimentally by the investigator. Prepare working dilution immediately before use.</p> <p>Western Blot 1:2,000 – 1:10,000</p> <p>Immunoprecipitation Not recommended. Use rabbit anti-Myosin-10 antibody A302-042A.</p>
APPLICATION NOTES	Western blot of lysates performed using standard western blot reagents and 4–8% SDS-PAGE.
ADDITIONAL INFO	<p><a href="https://www.bethyl.com/product/A302-043A">https://www.bethyl.com/product/A302-043A</a></p> <p>Use the link above to view SDS, a current list of citations, and other product specific information.</p>

This document certifies that this product has met all of the quality control standards defined by Bethyl Laboratories, Inc.  
Eric McIntush, PhD | Chief Scientific Officer Date: October 22, 2019



**Detection of human and mouse Myosin-10 by western blot.** *Samples:* Whole cell lysate from HeLa (5, 15 and 50 µg), HEK293T (T; 50 µg) and mouse NIH 3T3 (M; 50µg) cells. *Antibodies:* Affinity purified rabbit anti-Myosin-10 antibody A302-043A (lot 302-043A-1) used for WB at 1 µg/ml. *Detection:* Chemiluminescence with exposure time of 10 seconds.



**Detection of human Myosin-10 by western blot of immunoprecipitates.** *Samples:* Whole cell lysate from HeLa (1 mg for IP, 20% of IP loaded) from HeLa cells. *Antibodies:* Affinity purified rabbit anti-Myosin-10 antibody A302-043A (lot 302-043A-1) used for IP at 3 µg/mg lysate. Myosin-10 was also immunoprecipitated by rabbit anti-Myosin-10 antibody A302-042A, which recognizes an upstream epitope. For blotting immunoprecipitated Myosin-10, A302-043A was used at 1.0 µg/ml. *Detection:* Chemiluminescence with exposure time of 3 minutes.