

# G3BP2 Antibody

Rabbit Polyclonal

Antigen Affinity Purified

Protein ID NP\_036429.2

Catalog No. A302-040A

GeneID 9908

Lot No. A302-040A-4



<b>APPLICATIONS</b>	WB, IP
<b>SPECIES REACTIVITY</b>	Human
<b>PRESUMED REACTIVITY</b>	Based on 100% sequence identity, this antibody is predicted to react with Mouse and Orangutan
<b>AMOUNT</b>	100 µl
<b>CONCENTRATION</b>	1000 µg/ml
<b>STORAGE/SHELF LIFE</b>	2 – 8° C / 1 year from date of receipt
<b>PHYSICAL STATE</b>	Liquid
<b>BUFFER</b>	Tris-citrate/phosphate buffer, pH 7 to 8 containing 0.09% Sodium Azide
<b>ISOTYPE</b>	IgG
<b>ORIGIN</b>	USA
<b>PRODUCTION PROCEDURES</b>	Antibody was affinity purified using an epitope specific to G3BP2 immobilized on solid support.

The epitope recognized by A302-040A maps to a region between residue 275 and 325 of human GTPase activating protein (SH3 domain) binding protein 2 using the numbering given in entry NP\_036429.2 (GeneID 9908).

Immunoglobulin concentration was determined by extinction coefficient: absorbance at 280 nm of 1.4 equals 1.0 mg of IgG.

**APPLICATIONS** Centrifuge tube to remove product from lid. Optimal working dilutions should be determined experimentally by the investigator. Prepare working dilution immediately before use.

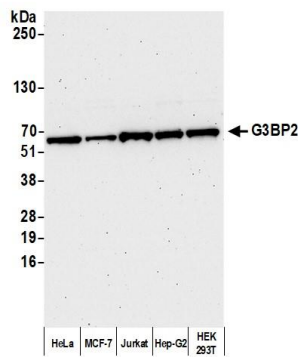
Western Blot 1:10,000 – 1:25,000

Immunoprecipitation 2 – 10 µg/mg lysate

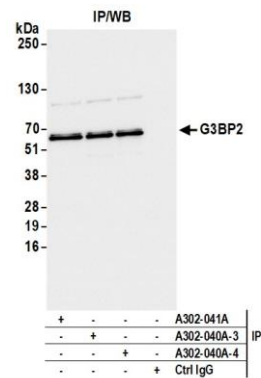
**ADDITIONAL INFO** <https://www.bethyl.com/product/A302-040A>

Use the link above to view SDS, a current list of citations, and other product specific information.  
IP-western blot protocol: [https://www.bethyl.com/content/protocol\\_IP\\_WB](https://www.bethyl.com/content/protocol_IP_WB)

This document certifies that this product has met all of the quality control standards defined by Bethyl Laboratories, Inc.  
Brian McWilliams, PhD Date: December 28, 2020



**Detection of human G3BP2 by western blot.** *Samples:* Whole cell lysate (10 µg) from HeLa, MCF-7, Jurkat, Hep-G2, and HEK293T cells prepared using NETN lysis buffer. *Antibody:* Affinity purified rabbit anti-G3BP2 antibody (A302-040A lot 4) used for WB at 0.04 µg/ml. *Detection:* Chemiluminescence with an exposure time of 75 seconds.



**Detection of human G3BP2 by western blot of immunoprecipitates.** *Samples:* Whole cell lysate (1.0 mg per IP reaction; 20% of IP loaded) from HEK293T cells prepared using NETN lysis buffer. *Antibodies:* Affinity purified rabbit anti-G3BP2 antibody (A302-040A lot 4) used for IP at 6 µg per reaction. G3BP2 was also immunoprecipitated by a previous lot of this antibody (A302-040A lot 3) and rabbit anti-G3BP2 antibody A302-041A. For blotting immunoprecipitated G3BP2, A302-040A was used at 0.04 µg/ml. *Detection:* Chemiluminescence with an exposure time of 1 seconds.