

BAT3 Antibody

Rabbit Polyclonal

Antigen Affinity Purified

Protein ID NP_004630.3

Catalog No. A302-038A

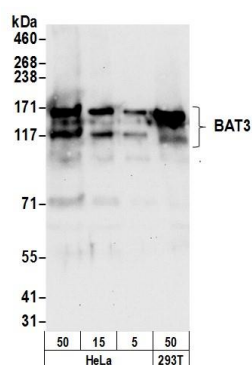
GeneID 7917

Lot No. A302-038A-2

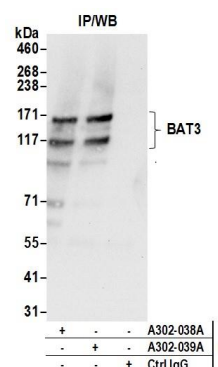


APPLICATIONS	WB, IP
SPECIES REACTIVITY	Human
PRESUMED REACTIVITY	Based on 100% sequence identity, this antibody is predicted to react with Mouse and Rat
AMOUNT	100 µl
CONCENTRATION	200 µg/ml
STORAGE/SHELF LIFE	2 - 8° C / 1 year from date of receipt
PHYSICAL STATE	Liquid
BUFFER	Tris-buffered Saline containing 0.1% BSA and 0.09% Sodium Azide
ISOTYPE	IgG
ORIGIN	USA
PRODUCTION PROCEDURES	<p>Antibody was affinity purified using an epitope specific to BAT3 immobilized on solid support.</p> <p>The epitope recognized by A302-038A maps to a region between residue 200 and 250 of human HLA-B associated transcript 3 using the numbering given in entry NP_004630.3 (GeneID 7917).</p> <p>Immunoglobulin concentration was determined by extinction coefficient: absorbance at 280 nm of 1.4 equals 1.0 mg of IgG.</p>
APPLICATIONS	<p>Centrifuge tube to remove product from lid. Optimal working dilutions should be determined experimentally by the investigator. Prepare working dilution immediately before use.</p> <p>Western Blot 1:2,000 - 1:10,000</p> <p>Immunoprecipitation 2 - 10 µg/mg lysate</p>
APPLICATION NOTES	<p>Western blot of immunoprecipitates performed using Normal Pig Serum (Cat. No. S100-020), Goat anti-Rabbit Light Chain HRP Conjugate (Cat. No. A120-113P) and 4-8% SDS-PAGE (link to IP-western blot protocol in Additional Info section below).</p> <p>Western blot of lysates performed using standard western blot reagents and 4-8% SDS-PAGE.</p>
ADDITIONAL INFO	<p>https://www.bethyl.com/product/A302-038A</p> <p>Use the link above to view SDS, a current list of citations, and other product specific information.</p> <p>IP-western blot protocol: https://www.bethyl.com/content/protocol_IP_WB</p>

This document certifies that this product has met all of the quality control standards defined by Bethyl Laboratories, Inc.
Eric McIntush, PhD | Chief Scientific Officer Date: June 21, 2019



Detection of human BAT3 by western blot. *Samples:* Nuclear extract from HeLa and HEK293T cells. *Antibody:* Affinity purified rabbit anti-BAT3 antibody A302-038A (lot A302-038A-2) used for WB at 0.04 µg/ml. *Detection:* Chemiluminescence with an exposure time of 10 seconds.



Detection of human BAT3 by western blot of immunoprecipitates. *Samples:* Nuclear extract (0.5 or 1.0 mg per IP reaction; 20% of IP loaded) from HeLa cells. *Antibodies:* Affinity purified rabbit anti-BAT3 antibody A302-038A (lot A302-038A-2) used for IP at 6 µg per reaction. BAT3 was also immunoprecipitated by rabbit anti-BAT3 antibody A302-039A. For blotting immunoprecipitated BAT3, A302-038A was used at 0.1 µg/ml. *Detection:* Chemiluminescence with an exposure time of 10 seconds.