

G3BP1 Antibody

Rabbit Polyclonal

Antigen Affinity Purified

Protein ID NP_005745.1

Catalog No. A302-033A

GeneID 10146

Lot No. A302-033A-2



APPLICATIONS	WB, IP
SPECIES REACTIVITY	Human, Mouse
PRESUMED REACTIVITY	Based on 100% sequence identity, this antibody is predicted to react with Orangutan
AMOUNT	100 µl
CONCENTRATION	200 µg/ml
STORAGE/SHELF LIFE	2 - 8° C / 1 year from date of receipt
PHYSICAL STATE	Liquid
BUFFER	Tris-buffered Saline containing 0.1% BSA and 0.09% Sodium Azide
ISOTYPE	IgG
ORIGIN	USA
PRODUCTION PROCEDURES	Antibody was affinity purified using an epitope specific to G3BP1 immobilized on solid support.

The epitope recognized by A302-033A maps to a region between residue 275 and 325 of human GTPase activating protein (SH3 domain) binding protein 1 using the numbering given in entry NP_005745.1 (GeneID 10146).

Immunoglobulin concentration was determined by extinction coefficient: absorbance at 280 nm of 1.4 equals 1.0 mg of IgG.

APPLICATIONS Centrifuge tube to remove product from lid. Optimal working dilutions should be determined experimentally by the investigator. Prepare working dilution immediately before use.

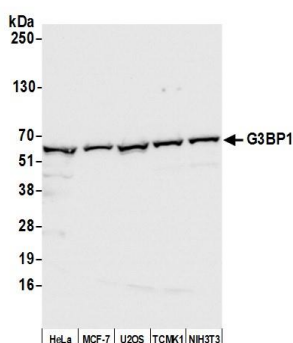
Western Blot 1:2,000 – 1:10,000

Immunoprecipitation 2 – 10 µg/mg lysate

ADDITIONAL INFO <https://www.bethyl.com/product/A302-033A>

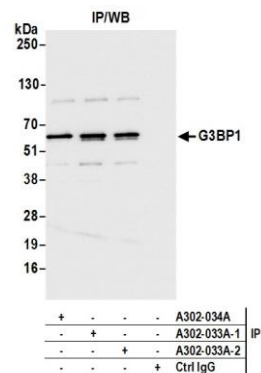
Use the link above to view SDS, a current list of citations, and other product specific information.
IP-western blot protocol: https://www.bethyl.com/content/protocol_IP_WB

This document certifies that this product has met all of the quality control standards defined by Bethyl Laboratories, Inc.
Eric McIntush, PhD | Chief Scientific Officer Date: July 28, 2020



Detection of human and mouse G3BP1 by western blot.

Samples: Whole cell lysate (50 μ g) from HeLa, MCF-7, U2OS, TCMK-1, and NIH 3T3 cells prepared using NETN lysis buffer. **Antibody:** Affinity purified rabbit anti-G3BP1 antibody A302-033A (lot A302-033A-2) used for WB at 0.04 μ g/ml. **Detection:** Chemiluminescence with an exposure time of 1 second.



Detection of human G3BP1 by western blot of immunoprecipitates.

Samples: Whole cell lysate (1.0 mg per IP reaction; 20% of IP loaded) from HeLa cells prepared using NETN lysis buffer. **Antibodies:** Affinity purified rabbit anti-G3BP1 antibody A302-033A (lot A302-033A-2) used for IP at 6 μ g per reaction. G3BP1 was also immunoprecipitated by a previous lot of this antibody (lot A302-033A-1) and rabbit anti-G3BP1 antibody A302-034A. For blotting immunoprecipitated G3BP1, A302-033A was used at 0.04 μ g/ml. **Detection:** Chemiluminescence with an exposure time of 1 second.