

RanGAP1 Antibody

Rabbit Polyclonal

Antigen Affinity Purified

Protein ID NP_002874.1

Catalog No. A302-027A

GeneID 5905

Lot No. A302-027A-1



APPLICATIONS	IP, IHC
SPECIES REACTIVITY	Human
AMOUNT	100 µl
CONCENTRATION	1000 µg/ml
STORAGE/SHELF LIFE	2 - 8° C / 1 year from date of receipt
PHYSICAL STATE	Liquid
BUFFER	Tris-citrate/phosphate buffer, pH 7 to 8 containing 0.09% Sodium Azide
ISOTYPE	IgG
ORIGIN	USA
PRODUCTION PROCEDURES	Antibody was affinity purified using an epitope specific to RanGAP1 immobilized on solid support.

The epitope recognized by A302-027A maps to a region between residue 400 and 450 of human Ran GTPase activating protein 1 using the numbering given in entry NP_002874.1 (GeneID 5905).

Immunoglobulin concentration was determined by extinction coefficient: absorbance at 280 nm of 1.4 equals 1.0 mg of IgG.

APPLICATIONS Centrifuge tube to remove product from lid. Optimal working dilutions should be determined experimentally by the investigator. Prepare working dilution immediately before use.

Western Blot Not recommended. Use rabbit anti-RanGAP1 antibody A302-026A.

Immunoprecipitation 2 - 5 µg/mg lysate

Immunohistochemistry 1:500 - 1:2,000. Epitope retrieval with Tris-EDTA pH 9.0 is recommended for FFPE tissue sections.

APPLICATION NOTES Western blot of immunoprecipitates performed using Normal Pig Serum (Cat. No. S100-020), Goat anti-Rabbit Light Chain HRP Conjugate (Cat. No. A120-113P) and 4-20% SDS-PAGE (link to IP-western blot protocol in Additional Info section below).

IHC HUMAN CONTROLS Breast Carcinoma, Colon Carcinoma, Ovarian Carcinoma, Prostate Carcinoma

ADDITIONAL INFO <https://www.bethyl.com/product/A302-027A>

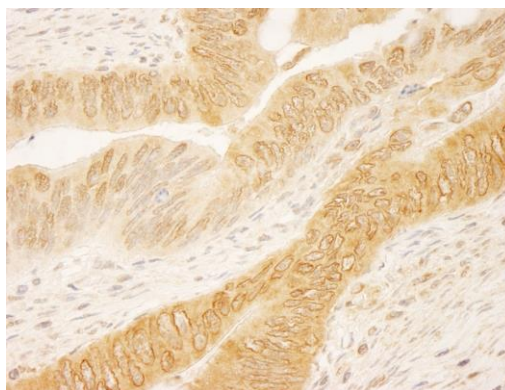
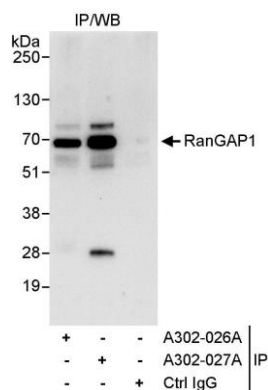
Use the link above to view SDS, a current list of citations, and other product specific information.

IP-western blot protocol: https://www.bethyl.com/content/protocol_IP_WB

This document certifies that this product has met all of the quality control standards defined by Bethyl Laboratories, Inc.

Eric McIntush, PhD | Chief Scientific Officer

Date: June 21, 2019



Detection of human RanGAP1 by western blot of immunoprecipitates. *Samples:* Whole cell lysate (1 mg for IP, 20% of IP loaded) from HEK293T cells. *Antibodies:* Affinity purified rabbit anti-RanGAP1 antibody A302-027A used for IP at 3 μ g/mg lysate. RanGAP1 was also immunoprecipitated by rabbit anti-RanGAP1 antibody A302-026A, which recognizes an upstream epitope. For blotting immunoprecipitated RanGAP1, A302-026A was used at 1 μ g/ml. *Detection:* Chemiluminescence with an exposure time of 30 seconds.

Detection of human RanGAP1 by immunohistochemistry. *Sample:* FFPE section of human colon carcinoma. *Antibody:* Affinity purified rabbit anti-RanGAP1 (Cat. No. A302-027A Lot1) used at a dilution of 1:1,000 (1 μ g/ml). *Detection:* DAB