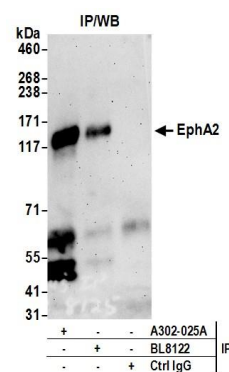


#### Detection of human and mouse EphA2 by western blot.

**Samples:** Whole cell lysate from A-549 (5, 15, 50  $\mu$ g), HeLa (50 $\mu$ g), and mouse NIH 3T3 (50 $\mu$ g) cells prepared using NETN lysis buffer. **Antibody:** Affinity purified rabbit anti-EphA2 antibody A302-025A (lot A302-025A-2) used for WB at 0.1  $\mu$ g/ml. **Detection:** Chemiluminescence with an exposure time of 75 seconds.



#### Detection of human EphA2 by western blot of immunoprecipitates.

**Samples:** Whole cell lysate (0.5 or 1.0 mg per IP reaction; 20% of IP loaded) from A-549 cells prepared using NETN lysis buffer. **Antibodies:** Affinity purified rabbit anti-EphA2 antibody A302-025A (lot A302-025A-2) used for IP at 6  $\mu$ g per reaction. EphA2 was also immunoprecipitated by rabbit anti-EphA2 antibody BL8122. For blotting immunoprecipitated EphA2, A302-025A was used at 0.4  $\mu$ g/ml. **Detection:** Chemiluminescence with an exposure time of 3 minutes.