

Tat-SF1 Antibody

Rabbit Polyclonal

Antigen Affinity Purified	Protein ID	NP_055315.2
Catalog No. A302-023A	GeneID	27336
Lot No. A302-023A-2		

APPLICATIONS	WB, IP
SPECIES REACTIVITY	Human
PRESUMED REACTIVITY	Based on 100% sequence identity, this antibody is predicted to react with Orangutan
AMOUNT	100 µl
CONCENTRATION	1000 µg/ml
STORAGE/SHELF LIFE	2 – 8°C / 1 year from date of receipt
PHYSICAL STATE	Liquid
BUFFER	Tris-citrate/phosphate buffer, pH 7 to 8 containing 0.09% Sodium Azide
ISOTYPE	IgG
ORIGIN	USA
PRODUCTION PROCEDURES	Antibody was affinity purified using an epitope specific to Tat-SF1 immobilized on solid support.

The epitope recognized by A302-023A maps to a region between residue 375 and 425 of human HIV-1 Tat specific factor 1 using the numbering given in entry NP_055315.2 (GeneID 27336).

Immunoglobulin concentration was determined by extinction coefficient: absorbance at 280 nm of 1.4 equals 1.0 mg of IgG.

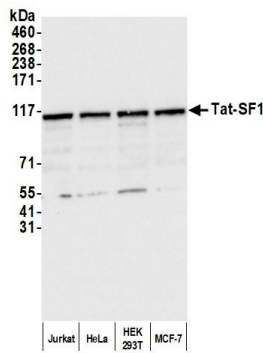
APPLICATIONS Centrifuge tube to remove product from lid. Optimal working dilutions should be determined experimentally by the investigator. Prepare working dilution immediately before use.

Western Blot 1:2,000 – 1:10,000

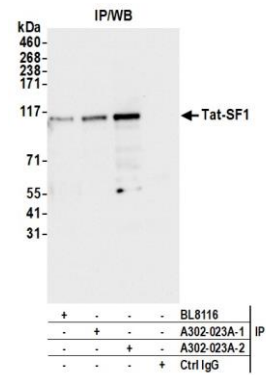
Immunoprecipitation 2 – 10 µg/mg lysate

ADDITIONAL INFO <https://www.bethyl.com/product/A302-023A>
Use the link above to view SDS, a current list of citations, and other product specific information.
IP-western blot protocol: https://www.bethyl.com/content/protocol_IP_WB

This document certifies that this product has met all of the quality control standards defined by Bethyl Laboratories, Inc.
Michael Spencer, PhD Date: March 18, 2022



Detection of human Tat-SF1 by western blot. *Samples:* Whole cell lysate (10 µg) from Jurkat, HeLa, HEK293T, and MCF-7 cells prepared using NETN lysis buffer. *Antibody:* Affinity purified rabbit anti-Tat-SF1 antibody (A302-023A lot 2) used for WB at 0.1 µg/ml. *Detection:* Chemiluminescence with an exposure time of 3 seconds.



Detection of human Tat-SF1 by western blot of immunoprecipitates. *Samples:* Whole cell lysate (1.0 mg per IP reaction; 10% of IP loaded) from HeLa cells prepared using NETN lysis buffer. *Antibodies:* Affinity purified rabbit anti-Tat-SF1 antibody (A302-023A lot 2) used for IP at 6 µg per reaction. Tat-SF1 was also immunoprecipitated by a previous lot of this antibody (A302-023A lot 1) and a second antibody against a different epitope of Tat-SF1 (BL8116). For blotting immunoprecipitated Tat-SF1, A302-023A was used at 0.1 µg/ml. *Detection:* Chemiluminescence with an exposure time of 3 seconds.