

# beta Catenin Antibody

Rabbit Polyclonal

Antigen Affinity Purified

Protein ID NP\_001895.1

Catalog No. A302-012A

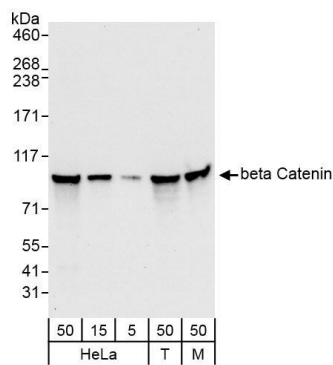
GeneID 1499

Lot No. A302-012A-1

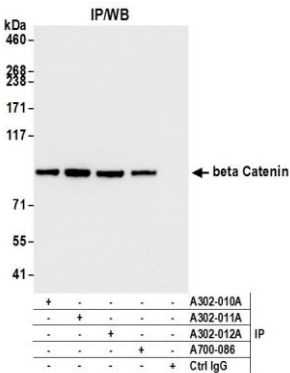


<b>APPLICATIONS</b>	WB, IP, IHC, ChIP-Seq								
<b>SPECIES REACTIVITY</b>	Human, Mouse								
<b>PRESUMED REACTIVITY</b>	Based on 100% sequence identity, this antibody is predicted to react with Rat, X. laevis, Bovine and Dog								
<b>AMOUNT</b>	100 µl								
<b>CONCENTRATION</b>	200 µg/ml								
<b>STORAGE/SHELF LIFE</b>	2 – 8° C / 1 year from date of receipt								
<b>PHYSICAL STATE</b>	Liquid								
<b>BUFFER</b>	Tris-buffered Saline containing 0.1% BSA and 0.09% Sodium Azide								
<b>ISOTYPE</b>	IgG								
<b>ORIGIN</b>	USA								
<b>PRODUCTION PROCEDURES</b>	<p>Antibody was affinity purified using an epitope specific to beta Catenin immobilized on solid support.</p> <p>The epitope recognized by A302-012A maps to a region between residue 760 and 781 of human beta-catenin using the numbering given in entry NP_001895.1 (GeneID 1499).</p> <p>Immunoglobulin concentration was determined by extinction coefficient: absorbance at 280 nm of 1.4 equals 1.0 mg of IgG.</p>								
<b>APPLICATIONS</b>	<p>Centrifuge tube to remove product from lid. Optimal working dilutions should be determined experimentally by the investigator. Prepare working dilution immediately before use.</p> <table><tr><td>Western Blot</td><td>1:2,000 – 1:10,000</td></tr><tr><td>Immunoprecipitation</td><td>2 – 5 µg/mg lysate</td></tr><tr><td>Immunohistochemistry</td><td>1:100 – 1:500. Epitope retrieval with citrate buffer pH 6.0 is recommended for FFPE tissue sections.</td></tr><tr><td>ChIP-Seq</td><td>ChIP-Seq 4 µg/30 µg chromatin</td></tr></table>	Western Blot	1:2,000 – 1:10,000	Immunoprecipitation	2 – 5 µg/mg lysate	Immunohistochemistry	1:100 – 1:500. Epitope retrieval with citrate buffer pH 6.0 is recommended for FFPE tissue sections.	ChIP-Seq	ChIP-Seq 4 µg/30 µg chromatin
Western Blot	1:2,000 – 1:10,000								
Immunoprecipitation	2 – 5 µg/mg lysate								
Immunohistochemistry	1:100 – 1:500. Epitope retrieval with citrate buffer pH 6.0 is recommended for FFPE tissue sections.								
ChIP-Seq	ChIP-Seq 4 µg/30 µg chromatin								
<b>APPLICATION NOTES</b>	Western blot of immunoprecipitates performed using Normal Pig Serum (Cat. No. S100-020), Goat anti-Rabbit Light Chain HRP Conjugate (Cat. No. A120-113P) and 4-8% SDS-PAGE (link to IP-western blot protocol in Additional Info section below).								
<b>IHC HUMAN CONTROLS</b>	Western blot of lysates performed using standard western blot reagents and 4-8% SDS-PAGE. Anaplastic Thyroid Carcinoma, Breast Carcinoma, Colon Carcinoma, Ovarian Carcinoma, Prostate Carcinoma								
<b>IHC MOUSE CONTROLS</b>	Teratoma								
<b>ADDITIONAL INFO</b>	<p><a href="https://www.bethyl.com/product/A302-012A">https://www.bethyl.com/product/A302-012A</a></p> <p>Use the link above to view SDS, a current list of citations, and other product specific information. IP-western blot protocol <a href="https://www.bethyl.com/content/protocol_IP_WB">https://www.bethyl.com/content/protocol_IP_WB</a></p>								

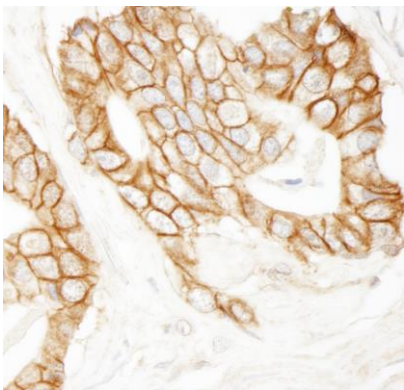
This document certifies that this product has met all of the quality control standards defined by Bethyl Laboratories, Inc.  
Eric McIntush, PhD | Chief Scientific Officer Date: August 16, 2019



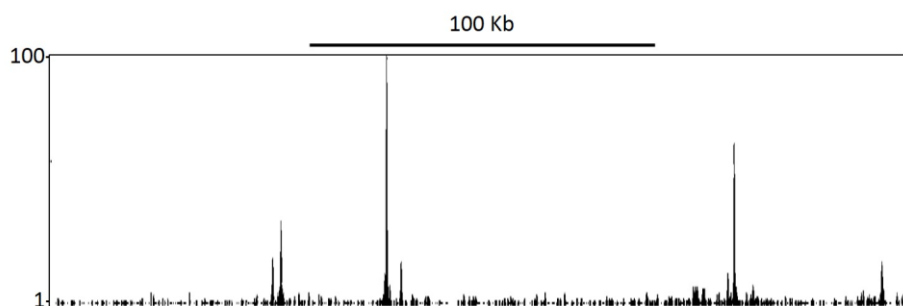
**Detection of human and mouse beta Catenin by western blot.** *Samples:* Whole cell lysate from HeLa (5, 15, and 50 µg), HEK293T (T; 50 µg) and mouse NIH 3T3 (M; 50 µg) cells. *Antibody:* Affinity purified rabbit anti-beta Catenin antibody A302-012A used at 0.04 µg/ml. *Detection:* Chemiluminescence with an exposure time of 30 seconds.



**Detection of human beta Catenin by western blot of immunoprecipitates.** *Samples:* Whole cell lysate (1.0 mg per IP reaction; 20% of IP loaded) from HeLa cells prepared using NETN lysis buffer. *Antibodies:* Rabbit anti-beta Catenin antibody (A302-012A lot 1) used for IP at 5 µg/mg lysate. beta Catenin was also immunoprecipitated by rabbit anti-beta Catenin antibodies (A302-010A, A302-011A) and rabbit anti-beta Catenin recombinant monoclonal antibody [BLR086G] (A700-086). For blotting immunoprecipitated beta Catenin, A700-086 was used at 1:1000. Chemiluminescence with an exposure time of 1 seconds.



**Detection of human beta Catenin by immunohistochemistry.** *Sample:* FFPE section of human prostate carcinoma. *Antibody:* Affinity purified rabbit anti-beta Catenin (Cat. No. A302-012A) used at a dilution of 1:200 (1 µg/ml). *Detection:* DAB



**Localization of beta Catenin Binding Sites by ChIP-sequencing.** Chromatin from SW837 cell line was immunoprecipitated with anti-beta Catenin antibody A302-012A and analyzed by DNA sequencing. The figure illustrates the peak distribution of beta Catenin binding within a 250 Kb region of chromosome 20 as detected using anti-beta Catenin A302-012A. ChIP-seq validation performed by Active Motif, Carlsbad, CA.