

# beta Catenin Antibody

Rabbit Polyclonal

Antigen Affinity Purified

Protein ID NP\_001895.1

Catalog No. A302-011A

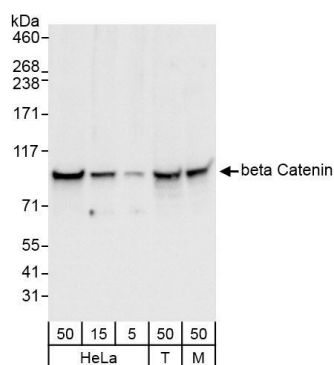
GeneID 1499

Lot No. A302-011A-1

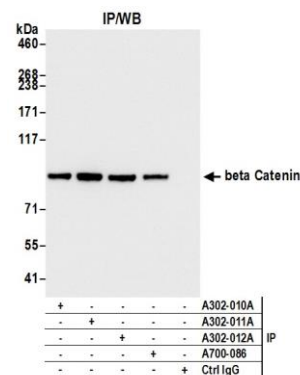


<b>APPLICATIONS</b>	WB, IP, IHC
<b>SPECIES REACTIVITY</b>	Human, Mouse
<b>PRESUMED REACTIVITY</b>	Based on 100% sequence identity, this antibody is predicted to react with Rat, X. laevis, Bovine and Dog
<b>AMOUNT</b>	100 µl
<b>CONCENTRATION</b>	200 µg/ml
<b>STORAGE/SHELF LIFE</b>	2 – 8° C / 1 year from date of receipt
<b>PHYSICAL STATE</b>	Liquid
<b>BUFFER</b>	Tris-buffered Saline containing 0.1% BSA and 0.09% Sodium Azide
<b>ISOTYPE</b>	IgG
<b>ORIGIN</b>	USA
<b>PRODUCTION PROCEDURES</b>	Antibody was affinity purified using an epitope specific to beta Catenin immobilized on solid support.  The epitope recognized by A302-011A maps to a region between residue 710 and 760 of human beta-catenin using the numbering given in entry NP_001895.1 (GeneID 1499).  Immunoglobulin concentration was determined by extinction coefficient: absorbance at 280 nm of 1.4 equals 1.0 mg of IgG.
<b>APPLICATIONS</b>	Centrifuge tube to remove product from lid. Optimal working dilutions should be determined experimentally by the investigator. Prepare working dilution immediately before use.  Western Blot 1:2,000 – 1:10,000 Immunoprecipitation 2 – 5 µg/mg lysate Immunohistochemistry 1:100 – 1:500. Epitope retrieval with citrate buffer pH 6.0 is recommended for FFPE tissue sections.
<b>APPLICATION NOTES</b>	Western blot of immunoprecipitates performed using Normal Pig Serum (Cat. No. S100-020), Goat anti-Rabbit Light Chain HRP Conjugate (Cat. No. A120-113P) and 4-8% SDS-PAGE (link to IP-western blot protocol in Additional Info section below).  Western blot of lysates performed using standard western blot reagents and 4-8% SDS-PAGE.
<b>IHC HUMAN CONTROLS</b>	Anaplastic Thyroid Carcinoma, Breast Carcinoma, Colon Carcinoma, Ovarian Carcinoma, Prostate Carcinoma
<b>IHC MOUSE CONTROLS</b>	Teratoma
<b>ADDITIONAL INFO</b>	<a href="https://www.bethyl.com/product/A302-011A">https://www.bethyl.com/product/A302-011A</a> Use the link above to view SDS, a current list of citations, and other product specific information. IP-western blot protocol <a href="https://www.bethyl.com/content/protocol_IP_WB">https://www.bethyl.com/content/protocol_IP_WB</a>

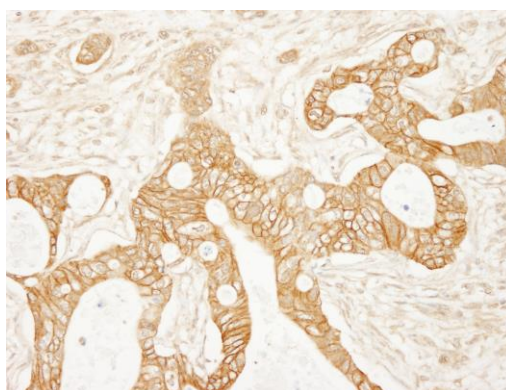
This document certifies that this product has met all of the quality control standards defined by Bethyl Laboratories, Inc.  
Eric McIntush, PhD | Chief Scientific Officer Date: August 16, 2019



**Detection of human and mouse beta Catenin by western blot.** *Samples:* Whole cell lysate from HeLa (5, 15, and 50 µg), HEK293T (T; 50 µg) and mouse NIH 3T3 (M; 50 µg) cells. *Antibody:* Affinity purified rabbit anti-beta Catenin antibody A302-011A used at 0.04 µg/ml. *Detection:* Chemiluminescence with an exposure time of 30 seconds.



**Detection of human beta Catenin by western blot of immunoprecipitates.** *Samples:* Whole cell lysate (1.0 mg per IP reaction; 20% of IP loaded) from HeLa cells prepared using NETN lysis buffer. *Antibodies:* Rabbit anti-beta Catenin antibody (A302-011A lot 1) used for IP at 5 µg/mg lysate. beta Catenin was also immunoprecipitated by rabbit anti-beta Catenin antibodies (A302-010A, A302-012A) and rabbit anti-beta Catenin recombinant monoclonal antibody [BLR086G] (A700-086). For blotting immunoprecipitated beta Catenin, A700-086 was used at 1:1000. Chemiluminescence with an exposure time of 1 seconds.



**Detection of human beta Catenin by immunohistochemistry.** *Sample:* FFPE section of human ovarian carcinoma. *Antibody:* Affinity purified rabbit anti-beta Catenin (Cat. No. A302-011A) used at a dilution of 1:200 (1 µg/ml). *Detection:* DAB

