

# ABCF2 Antibody

Rabbit Polyclonal

Antigen Affinity Purified

Protein ID NP\_009120.1

Catalog No. A302-005A

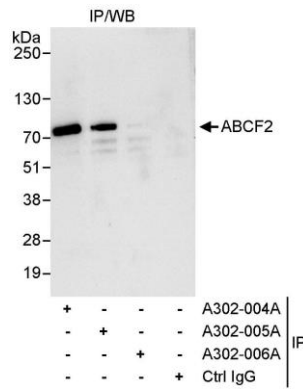
GeneID 10061

Lot No. A302-005A-1



<b>APPLICATIONS</b>	IP
<b>SPECIES REACTIVITY</b>	Human
<b>PRESUMED REACTIVITY</b>	Based on 100% sequence identity, this antibody is predicted to react with Mouse and Bovine
<b>AMOUNT</b>	100 µl
<b>CONCENTRATION</b>	1000 µg/ml
<b>STORAGE/SHELF LIFE</b>	2 - 8° C / 1 year from date of receipt
<b>PHYSICAL STATE</b>	Liquid
<b>BUFFER</b>	Tris-citrate/phosphate buffer, pH 7 to 8 containing 0.09% Sodium Azide
<b>ISOTYPE</b>	IgG
<b>ORIGIN</b>	USA
<b>PRODUCTION PROCEDURES</b>	<p>Antibody was affinity purified using an epitope specific to ABCF2 immobilized on solid support.</p> <p>The epitope recognized by A302-005A maps to a region between residue 475 and 525 of human ATP-binding cassette, sub-family F (GCN20), member 2 using the numbering given in entry NP_009120.1 (GeneID 10061).</p> <p>Immunoglobulin concentration was determined by extinction coefficient: absorbance at 280 nm of 1.4 equals 1.0 mg of IgG.</p>
<b>APPLICATIONS</b>	<p>Centrifuge tube to remove product from lid. Optimal working dilutions should be determined experimentally by the investigator. Prepare working dilution immediately before use.</p> <p>Western Blot                      Not recommended. Use rabbit anti-ABCF2 antibody A302-004A or A302-006A.</p> <p>Immunoprecipitation        2 - 5 µg/mg lysate</p>
<b>APPLICATION NOTES</b>	Western blot of immunoprecipitates performed using Normal Pig Serum (Cat. No. S100-020), Goat anti-Rabbit Light Chain HRP Conjugate (Cat. No. A120-113P) and 4-8% SDS-PAGE (link to IP-western blot protocol in Additional Info section below).
<b>ADDITIONAL INFO</b>	<p><a href="https://www.bethyl.com/product/A302-005A">https://www.bethyl.com/product/A302-005A</a></p> <p>Use the link above to view SDS, a current list of citations, and other product specific information. IP-western blot protocol: <a href="https://www.bethyl.com/content/protocol_IP_WB">https://www.bethyl.com/content/protocol_IP_WB</a></p>

This document certifies that this product has met all of the quality control standards defined by Bethyl Laboratories, Inc.  
Eric McIntush, PhD | Chief Scientific Officer Date: June 21, 2019



**Detection of human ABCF2 by western blot of immunoprecipitates.** *Samples:* Whole cell lysate (1 mg for IP, 20% of IP loaded) from HeLa cells. *Antibodies:* Affinity purified rabbit anti-ABCF2 antibody A302-005A used for IP at 3  $\mu\text{g}/\text{mg}$  lysate. ABCF2 was also immunoprecipitated by rabbit anti-ABCF2 antibody A302-004A, which recognizes an upstream epitope. For blotting immunoprecipitated ABCF2, A302-004A was used at 1  $\mu\text{g}/\text{ml}$ . *Detection:* Chemiluminescence with an exposure time of 10 seconds.