

eIF3A/eIF3S10 Antibody

Rabbit Polyclonal

Antigen Affinity Purified

Protein ID NP_003741.1

Catalog No. A302-002A

GeneID 8661

Lot No. A302-002A-1



APPLICATIONS	WB, IP
SPECIES REACTIVITY	Human, Mouse
PRESUMED REACTIVITY	Based on 100% sequence identity, this antibody is predicted to react with Rat, Zebrafish and X. tropicalis
AMOUNT	100 µl
CONCENTRATION	1000 µg/ml
STORAGE/SHELF LIFE	2 - 8° C / 1 year from date of receipt
PHYSICAL STATE	Liquid
BUFFER	Tris-citrate/phosphate buffer, pH 7 to 8 containing 0.09% Sodium Azide
ISOTYPE	IgG
ORIGIN	USA
PRODUCTION PROCEDURES	Antibody was affinity purified using an epitope specific to eIF3A/eIF3S10 immobilized on solid support.

The epitope recognized by A302-002A maps to a region between residue 1 and 50 of human translation initiation factor 3 subunit A (eukaryotic translation initiation factor 3, subunit 10) using the numbering given in entry NP_003741.1 (GeneID 8661).

Immunoglobulin concentration was determined by extinction coefficient: absorbance at 280 nm of 1.4 equals 1.0 mg of IgG.

APPLICATIONS Centrifuge tube to remove product from lid. Optimal working dilutions should be determined experimentally by the investigator. Prepare working dilution immediately before use.

Western Blot 1:2,000 – 1:10,000

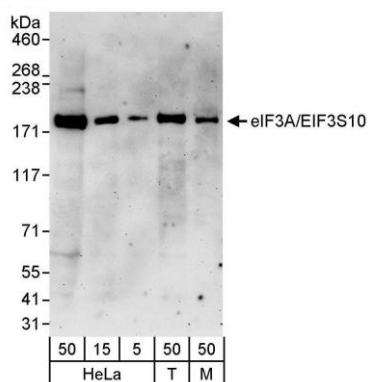
Immunoprecipitation 2 – 5 µg/mg lysate

APPLICATION NOTES Western blot of immunoprecipitates performed using Normal Pig Serum (Cat. No. S100-020), Goat anti-Rabbit Light Chain HRP Conjugate (Cat. No. A120-113P) and 4-8% SDS-PAGE (link to IP-western blot protocol in Additional Info section below).

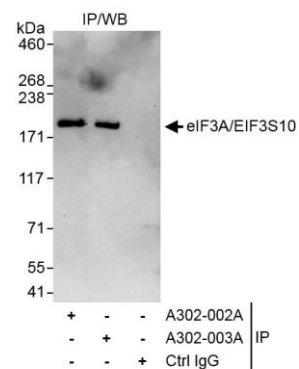
IHC HUMAN CONTROLS Western blot of lysates performed using standard western blot reagents and 4-8% SDS-PAGE. Breast Carcinoma, Colon Carcinoma, Prostate Carcinoma

ADDITIONAL INFO <https://www.bethyl.com/product/A302-002A>
Use the link above to view SDS, a current list of citations, and other product specific information. IP-western blot protocol https://www.bethyl.com/content/protocol_IP_WB

This document certifies that this product has met all of the quality control standards defined by Bethyl Laboratories, Inc.
Eric McIntush, PhD | Chief Scientific Officer Date: November 12, 2019



Detection of human and mouse eIF3A/eIF3S10 by western blot. *Samples:* Whole cell lysate from HeLa (5, 15, and 50 μ g), HEK293T (T; 50 μ g) and mouse NIH 3T3 (M; 50 μ g) cells. *Antibody:* Affinity purified rabbit anti-eIF3A/eIF3S10 antibody A302-002A (lot A302-002A-1) used at 0.1 μ g/ml. *Detection:* Chemiluminescence with an exposure time of 3 minutes.



Detection of human eIF3A/eIF3S10 by western blot of immunoprecipitates (h). *Samples:* Whole cell lysate (1 mg for IP, 20% of IP loaded) from HeLa cells. *Antibodies:* Affinity purified rabbit anti-eIF3A/eIF3S10 antibody A302-002A (lot A302-002A-1) used for IP at 3 μ g/mg lysate. eIF3A/eIF3S10 was also immunoprecipitated by rabbit anti-eIF3A/eIF3S10 antibody A302-003A, which recognizes a downstream epitope. For blotting immunoprecipitated eIF3A/eIF3S10, A302-002A was used at 1.0 μ g/ml. *Detection:* Chemiluminescence with exposure time of 30 seconds.