

# Cyclin C Antibody

Rabbit Polyclonal

Antigen Affinity Purified

Protein ID NP\_005181.2

Catalog No. A301-989A

GeneID 892

Lot No. A301-989A-2



<b>APPLICATIONS</b>	WB, IP, IHC
<b>SPECIES REACTIVITY</b>	Human
<b>PRESUMED REACTIVITY</b>	Based on 100% sequence identity, this antibody is predicted to react with Mouse, Rat, Chicken and Bovine
<b>AMOUNT</b>	100 µl
<b>CONCENTRATION</b>	1000 µg/ml
<b>STORAGE/SHELF LIFE</b>	2 – 8° C / 1 year from date of receipt
<b>PHYSICAL STATE</b>	Liquid
<b>BUFFER</b>	Tris-citrate/phosphate buffer, pH 7 to 8 containing 0.09% Sodium Azide
<b>ISOTYPE</b>	IgG
<b>ORIGIN</b>	USA
<b>PRODUCTION PROCEDURES</b>	Antibody was affinity purified using an epitope specific to Cyclin C immobilized on solid support.

The epitope recognized by A301-989A maps to a region between residue 233 and 283 of human cyclin C using the numbering given in entry NP\_005181.2 (GeneID 892).

Immunoglobulin concentration was determined by extinction coefficient: absorbance at 280 nm of 1.4 equals 1.0 mg of IgG.

**APPLICATIONS** Centrifuge tube to remove product from lid. Optimal working dilutions should be determined experimentally by the investigator. Prepare working dilution immediately before use.

Western Blot 1:2,000 – 1:10,000

Immunoprecipitation 2 – 10 µg/mg lysate

Immunohistochemistry 1:1,000 – 1:5,000. Epitope retrieval with citrate buffer pH 6.0 or Tris-EDTA pH 9.0 is recommended for FFPE tissue sections.

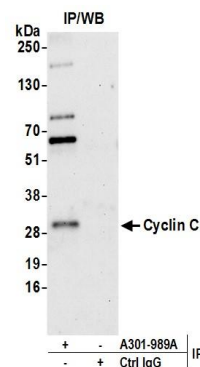
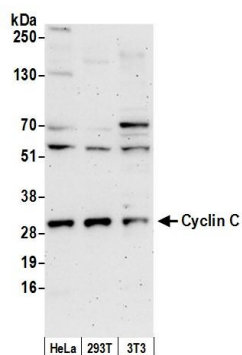
**IHC HUMAN CONTROLS** Breast Carcinoma, Skin Squamous Cell Carcinoma

**ADDITIONAL INFO** <https://www.bethyl.com/product/A301-989A>

Use the link above to view SDS, a current list of citations, and other product specific information.

IP-western blot protocol: [https://www.bethyl.com/content/protocol\\_IP\\_WB](https://www.bethyl.com/content/protocol_IP_WB)

This document certifies that this product has met all of the quality control standards defined by Bethyl Laboratories, Inc.  
Eric McIntush, PhD | Chief Scientific Officer Date: May 14, 2020



#### Detection of human and mouse Cyclin C by western blot.

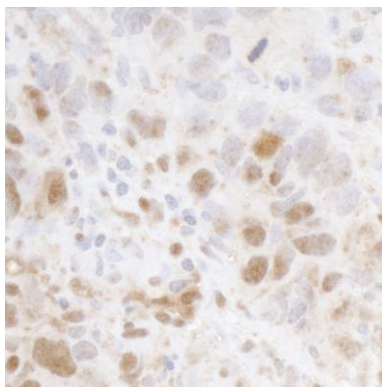
*Samples:* Whole cell lysate (50 µg) from HeLa, HEK293T, and mouse NIH 3T3 cells prepared using NETN lysis buffer.

*Antibody:* Affinity purified rabbit anti-Cyclin C antibody A301-989A (lot A301-989A-2) used for WB at 0.1 µg/ml.

*Detection:* Chemiluminescence with an exposure time of 3 minutes.

#### Detection of human Cyclin C by western blot of immunoprecipitates.

*Samples:* Whole cell lysate (0.5 or 1.0 mg per IP reaction; 20% of IP loaded) from HeLa cells prepared using NETN lysis buffer. *Antibodies:* Affinity purified rabbit anti-Cyclin C antibody A301-989A (lot A301-989A-2) used for IP at 6 µg per reaction. For blotting immunoprecipitated Cyclin C, A301-989A was used at 1 µg/ml. *Detection:* Chemiluminescence with an exposure time of 30 seconds.



#### Detection of human Cyclin C by immunohistochemistry.

*Sample:* FFPE section of human breast carcinoma.

*Antibody:* Affinity purified rabbit anti-Cyclin C (Cat. No. A301-989A Lot2) used at a dilution of 1:1,000 (1 µg/ml).

*Detection:* DAB