

# BRD4 Antibody

Rabbit Polyclonal

Antigen Affinity Purified

Protein ID NP\_490597.1

Catalog No. A301-985A100

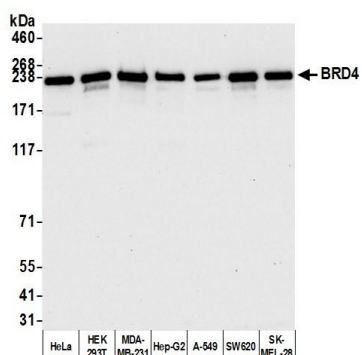
GeneID 23476

Lot No. A301-985A100-8

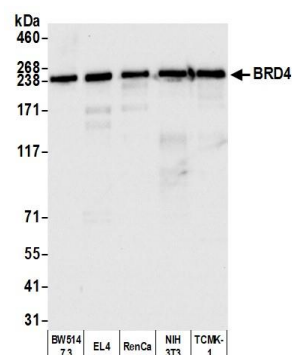


<b>APPLICATIONS</b>	WB, IP, IHC
<b>SPECIES REACTIVITY</b>	Human, Mouse
<b>AMOUNT</b>	100 µl
<b>CONCENTRATION</b>	1000 µg/ml
<b>STORAGE/SHELF LIFE</b>	2 – 8° C / 1 year from date of receipt
<b>PHYSICAL STATE</b>	Liquid
<b>BUFFER</b>	Tris-citrate/phosphate buffer, pH 7 to 8 containing 0.09% Sodium Azide
<b>ISOTYPE</b>	IgG
<b>ORIGIN</b>	USA
<b>PRODUCTION PROCEDURES</b>	<p>Antibody was affinity purified using an epitope specific to BRD4 immobilized on solid support.</p> <p>The epitope recognized by A301-985A100 maps to a region between residue 1312 and 1362 of human bromodomain-containing protein 4 using the numbering given in entry NP_490597.1 (GeneID 23476).</p> <p>Immunoglobulin concentration was determined by extinction coefficient: absorbance at 280 nm of 1.4 equals 1.0 mg of IgG.</p>
<b>APPLICATIONS</b>	<p>Centrifuge tube to remove product from lid. Optimal working dilutions should be determined experimentally by the investigator. Prepare working dilution immediately before use.</p> <p>Western Blot 1:2,000 – 1:10,000</p> <p>Immunoprecipitation 2 – 10 µg/mg lysate</p> <p>Immunohistochemistry 1:1,000 to 1:5,000. Epitope retrieval with citrate buffer pH6.0 is recommended for FFPE tissue sections.</p>
<b>APPLICATION NOTES</b>	<p>Western blot of immunoprecipitates performed using Normal Pig Serum (Cat. No. S100-020), Goat anti-Rabbit Light Chain HRP Conjugate (Cat. No. A120-113P) and 4-8% SDS-PAGE (link to IP-western blot protocol in Additional Info section below).</p> <p>Western blot of lysates performed using standard western blot reagents and 4-8% SDS-PAGE.</p>
<b>IHC HUMAN CONTROLS</b>	Breast Carcinoma, Ovarian Carcinoma
<b>IHC MOUSE CONTROLS</b>	Colon Carcinoma CT26, Plasmacytoma, Renal Cell Carcinoma
<b>ADDITIONAL INFO</b>	<p><a href="https://www.bethyl.com/product/A301-985A100">https://www.bethyl.com/product/A301-985A100</a></p> <p>Use the link above to view SDS, a current list of citations, and other product specific information.</p> <p>IP-western blot protocol <a href="https://www.bethyl.com/content/protocol_IP_WB">https://www.bethyl.com/content/protocol_IP_WB</a></p>

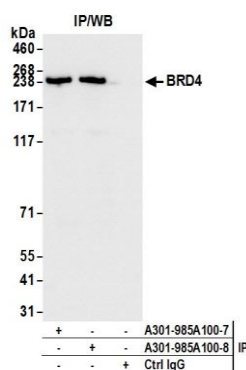
This document certifies that this product has met all of the quality control standards defined by Bethyl Laboratories, Inc.  
Eric McIntush, PhD | Chief Scientific Officer Date: December 20, 2019



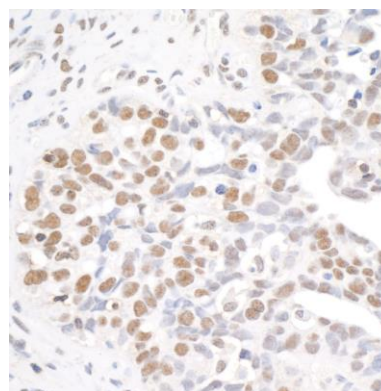
**Detection of human BRD4 by western blot.** *Samples:* Whole cell lysate (10 µg) from HeLa, HEK293T, MDA-MB-231, Hep-G2, A-549, SW620, and SK-MEL-28 cells prepared using NETN lysis buffer. *Antibody:* Affinity purified rabbit anti-BRD4 antibody A301-985A100 (lot A301-985A100-8) used for WB at 0.04 µg/ml. *Detection:* Chemiluminescence with an exposure time of 10 seconds.



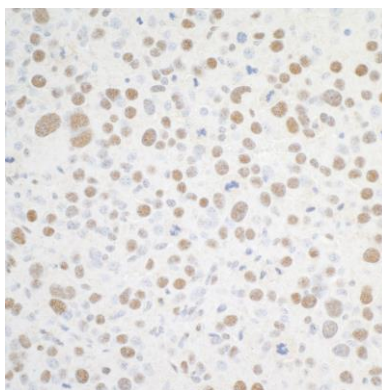
**Detection of mouse BRD4 by western blot.** *Samples:* Whole cell lysate (15 µg) from BW5147.3, EL4, RenCa, NIH 3T3, and TCMK-1 cells prepared using NETN lysis buffer. *Antibody:* Affinity purified rabbit anti-BRD4 antibody A301-985A100 (lot A301-985A100-8) used for WB at 0.04 µg/ml. *Detection:* Chemiluminescence with an exposure time of 3 seconds.



**Detection of human BRD4 by western blot of immunoprecipitates.** *Samples:* Whole cell lysate (1.0 mg per IP reaction; 20% of IP loaded) from HeLa cells prepared using NETN lysis buffer. *Antibodies:* Affinity purified rabbit anti-BRD4 antibody A301-985A100 (lot A301-985A100-8) used for IP at 6 µg per reaction. BRD4 was also immunoprecipitated by a previous lot of this antibody (lot A301-985A100-7). For blotting immunoprecipitated BRD4, rabbit anti-BRD4 recombinant monoclonal antibody A700-004 was used at 1:1000. *Detection:* Chemiluminescence with an exposure time of 1 second.



**Detection of human BRD4 by immunohistochemistry.** *Sample:* FFPE section of human ovarian carcinoma. *Antibody:* Affinity purified rabbit anti-BRD4 (Cat. No. A301-985A100 lot 8) used at a dilution of 1:5,000 (0.2 µg/ml). *Detection:* DAB

**Detection of mouse BRD4 by immunohistochemistry.**

*Sample:* FFPE section of mouse renal cell carcinoma.

*Antibody:* Affinity purified rabbit anti-BRD4 (Cat. No. A301-985A100 lot 8) used at a dilution of 1:5,000 (0.2 µg/ml). *Detection:* DAB