

CKII beta Antibody

Rabbit Polyclonal

Antigen Affinity Purified

Protein ID NP_001311.3

Catalog No. A301-983A

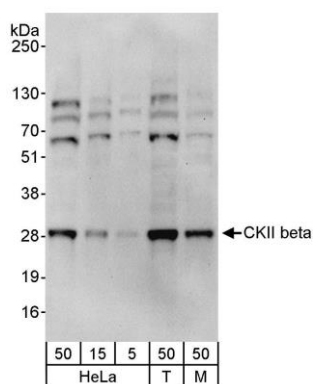
GeneID 1460

Lot No. A301-983A-1



APPLICATIONS	WB, IHC
SPECIES REACTIVITY	Human, Mouse
PRESUMED REACTIVITY	Based on 100% sequence identity, this antibody is predicted to react with Rat, Zebrafish, X. laevis, Chicken, Bovine, Rabbit and Pig
AMOUNT	100 µl
CONCENTRATION	200 µg/ml
STORAGE/SHELF LIFE	2 - 8° C / 1 year from date of receipt
PHYSICAL STATE	Liquid
BUFFER	Tris-buffered Saline containing 0.1% BSA and 0.09% Sodium Azide
ISOTYPE	IgG
ORIGIN	USA
PRODUCTION PROCEDURES	Antibody was affinity purified using an epitope specific to CKII beta immobilized on solid support. The epitope recognized by A301-983A maps to a region between residue 100 and 150 of human casein kinase 2, beta using the numbering given in entry NP_001311.3 (GeneID 1460). Immunoglobulin concentration was determined by extinction coefficient: absorbance at 280 nm of 1.4 equals 1.0 mg of IgG.
APPLICATIONS	Centrifuge tube to remove product from lid. Optimal working dilutions should be determined experimentally by the investigator. Prepare working dilution immediately before use. Western Blot 1:2,000 - 1:10,000 Immunoprecipitation Not recommended. Use rabbit anti-CKII beta antibody A301-984A. Immunohistochemistry 1:500 - 1:2,000. Epitope retrieval with Tris-EDTA pH 9.0 is recommended for FFPE tissue sections.
APPLICATION NOTES	Western blot of lysates performed using standard western blot reagents and 4-20% SDS-PAGE.
IHC HUMAN CONTROLS	Breast Carcinoma, Non-Small Cell Lung Cancer, Ovarian Carcinoma, Prostate Carcinoma, Testicular Seminoma
IHC MOUSE CONTROLS	Squamous Cell Carcinoma, Teratoma
ADDITIONAL INFO	https://www.bethyl.com/product/A301-983A Use the link above to view SDS, a current list of citations, and other product specific information.

This document certifies that this product has met all of the quality control standards defined by Bethyl Laboratories, Inc.
Eric McIntush, PhD | Chief Scientific Officer Date: June 21, 2019

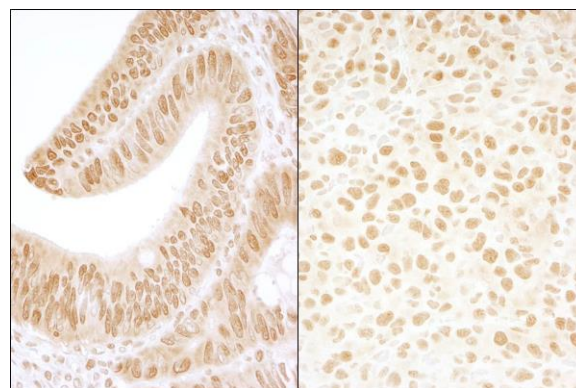


Detection of human and mouse CKII beta by western blot.

Samples: Whole cell lysate from HeLa (5, 15 and 50 µg), HEK293T (T; 50 µg) and mouse NIH 3T3 (M; 50 µg) cells.

Antibodies: Affinity purified rabbit anti-CKII beta antibody A301-983A used for WB at 0.04 µg/ml. *Detection:*

Chemiluminescence with an exposure time of 30 seconds.



Detection of human and mouse CKII beta by immunohistochemistry.

Sample: FFPE section of human colon carcinoma (left) and mouse squamous cell carcinoma (right). *Antibody:* Affinity purified rabbit anti-CKII beta (Cat. No. A301-983A) used at a dilution of 1:1,000 (0.2 µg/ml). *Detection:* DAB