

# Pol kappa Antibody

Rabbit Polyclonal

Antigen Affinity Purified

Protein ID NP\_057302.1

Catalog No. A301-975A

GeneID 51426

Lot No. A301-975A-1



**APPLICATIONS** WB

**SPECIES REACTIVITY** Human

**AMOUNT** 100 µl

**CONCENTRATION** 200 µg/ml

**STORAGE/SHELF LIFE** 2 - 8° C / 1 year from date of receipt

**PHYSICAL STATE** Liquid

**BUFFER** Tris-buffered Saline containing 0.1% BSA and 0.09% Sodium Azide

**ISOTYPE** IgG

**ORIGIN** USA

**PRODUCTION PROCEDURES** Antibody was affinity purified using an epitope specific to Pol kappa immobilized on solid support.

The epitope recognized by A301-975A maps to a region between residue 675 and 725 of human DNA polymerase kappa using the numbering given in entry NP\_057302.1 (GeneID 51426).

Immunoglobulin concentration was determined by extinction coefficient: absorbance at 280 nm of 1.4 equals 1.0 mg of IgG.

**APPLICATIONS** Centrifuge tube to remove product from lid. Optimal working dilutions should be determined experimentally by the investigator. Prepare working dilution immediately before use.

Western Blot 1:2,000 - 1:10,000

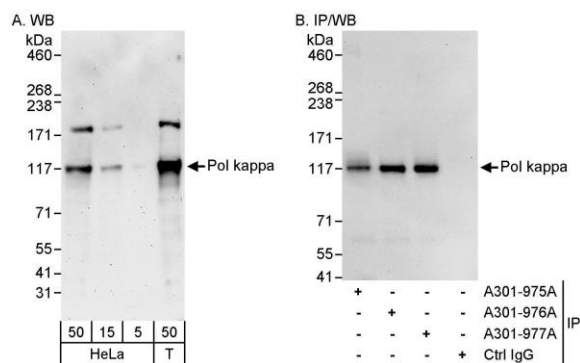
Immunoprecipitation Not recommended. Use rabbit anti-Pol kappa antibody A301-976A or A301-977A.

**APPLICATION NOTES** Western blot of lysates performed using standard western blot reagents and 4-8% SDS-PAGE.

**ADDITIONAL INFO** <https://www.bethyl.com/product/A301-975A>

Use the link above to view SDS, a current list of citations, and other product specific information.

This document certifies that this product has met all of the quality control standards defined by Bethyl Laboratories, Inc.  
Eric McIntush, PhD | Chief Scientific Officer Date: June 21, 2019



**Detection of human Pol kappa by western blot and immunoprecipitation.** *Samples:* Whole cell lysate from HeLa (5, 15 and 50 µg for WB; 1 mg for IP, 20% of IP loaded) and HEK293T (T; 50 µg) cells. *Antibodies:* Affinity purified rabbit anti-Pol kappa antibody A301-975A used for WB at 0.04 µg/ml (A) and 1 µg/ml (B) and used for IP at 3 µg/mg lysate. Pol kappa was also immunoprecipitated by rabbit anti-Pol kappa antibodies A301-976A and A301-977A, which recognize downstream epitopes. *Detection:* Chemiluminescence with exposure times of 3 minutes (A) and 10 seconds (B).