

ch-TOG Antibody

Rabbit Polyclonal

Antigen Affinity Purified

Protein ID NP_001008938.1

Catalog No. A301-971A

GeneID 9793

Lot No. A301-971A-1



APPLICATIONS	WB, IP
SPECIES REACTIVITY	Human, Mouse
AMOUNT	100 µl
CONCENTRATION	200 µg/ml
STORAGE/SHELF LIFE	2 – 8° C / 1 year from date of receipt
PHYSICAL STATE	Liquid
BUFFER	Tris-buffered Saline containing 0.1% BSA and 0.09% Sodium Azide
ISOTYPE	IgG
ORIGIN	USA
PRODUCTION PROCEDURES	Antibody was affinity purified using an epitope specific to ch-TOG immobilized on solid support.

The epitope recognized by A301-971A maps to a region between residue 1982 and 2032 of human colonic and hepatic tumor over-expressed protein using the numbering given in entry NP_001008938.1 (GeneID 9793).

Immunoglobulin concentration was determined by extinction coefficient: absorbance at 280 nm of 1.4 equals 1.0 mg of IgG.

APPLICATIONS Centrifuge tube to remove product from lid. Optimal working dilutions should be determined experimentally by the investigator. Prepare working dilution immediately before use.

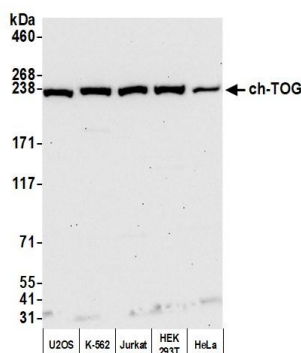
Western Blot 1:2,000 – 1:10,000

Immunoprecipitation 2 – 10 µg/mg lysate

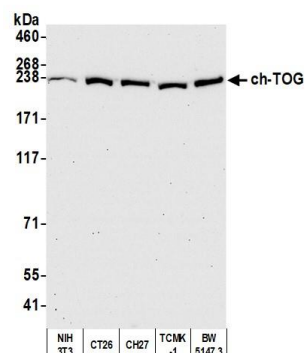
ADDITIONAL INFO <https://www.bethyl.com/product/A301-971A>

Use the link above to view SDS, a current list of citations, and other product specific information.
IP-western blot protocol: https://www.bethyl.com/content/protocol_IP_WB

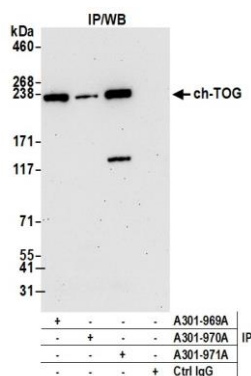
This document certifies that this product has met all of the quality control standards defined by Bethyl Laboratories, Inc.
Eric McIntush, PhD | Chief Scientific Officer Date: March 5, 2020



Detection of human ch-TOG by western blot. *Samples:* Whole cell lysate (50 µg) from U2OS, K-562, Jurkat, HEK293T, and HeLa cells prepared using NETN lysis buffer. ***Antibody:*** Affinity purified rabbit anti-ch-TOG antibody A301-971A (lot A301-971A-1) used for WB at 0.04 µg/ml. ***Detection:*** Chemiluminescence with an exposure time of 30 seconds.



Detection of mouse ch-TOG by western blot. *Samples:* Whole cell lysate (50 µg) from NIH 3T3, CT26, CH27, TCMK-1, and BW5147.3 cells prepared using NETN lysis buffer. ***Antibody:*** Affinity purified rabbit anti-ch-TOG antibody A301-971A (lot A301-971A-1) used for WB at 0.04 µg/ml. ***Detection:*** Chemiluminescence with an exposure time of 30 seconds.



Detection of human ch-TOG by western blot of immunoprecipitates. *Samples:* Whole cell lysate (1.0 mg per IP reaction; 20% of IP loaded) from HeLa cells prepared using NETN lysis buffer. ***Antibodies:*** Affinity purified rabbit anti-ch-TOG antibody A301-971A (lot A301-971A-1) used for IP at 6 µg per reaction. ch-TOG was also immunoprecipitated by rabbit anti-ch-TOG antibodies A301-969A and A301-970A. For blotting immunoprecipitated ch-TOG, A301-971A was used at 0.1 µg/ml. ***Detection:*** Chemiluminescence with an exposure time of 75 seconds.